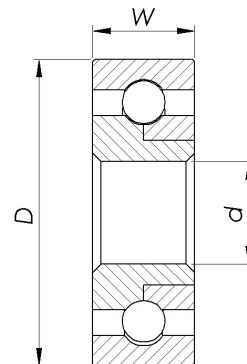


Unground Open Ball Bearing



- Unground raceways
- Zinc plating carbon steel rings
- Hardened carbon steel balls
- Lubricant - Anti-rust oil only

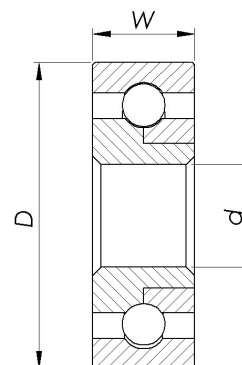


Part Number	Bore d (in)	Outside Diameter D (in)	Width W (in)	No. of Balls	Ball Diameter (in)	Load Rating (lb) at 500 RPM
	+0.005 -0.000	+0.002 -0.002	+0.010 -0.010			
W0616	0.09375	0.5000	0.1875	8	0.0938	15
W0820	0.1250	0.6250	0.1875	9	0.1250	35
W1218	0.1875	0.5625	0.1875	11	0.0938	20
W1220	0.1875	0.6250	0.1875	13	0.0938	25
W1222	0.1875	0.6875	0.2500	10	0.1250	35
W1224	0.1875	0.7500	0.2500	11	0.1250	40
W1228	0.1875	0.8750	0.2500	13	0.1250	45
W1622	0.2500	0.6875	0.2500	10	0.1250	35
W1624	0.2500	0.7500	0.2500	11	0.1250	40
W1626	0.2500	0.8125	0.2500	11	0.1250	40
W1628	0.2500	0.8750	0.2500	13	0.1250	45
W1629	0.2500	0.9063	0.3125	11	0.1563	60
W1632	0.2500	1.0000	0.3125	10	0.1875	80
W1634	0.2500	1.0625	0.2500	13	0.1563	70
W2028	0.3125	0.8750	0.2500	13	0.1250	45
W2029	0.3125	0.9063	0.3125	15	0.1250	55
W2030	0.3125	0.9375	0.3125	15	0.1250	55
W2032	0.3125	1.0000	0.3125	13	0.1563	70
W2034	0.3125	1.0625	0.2500	13	0.1563	70
W2034B	0.3125	1.0625	0.3750	14	0.1563	75
W2428	0.3750	0.8750	0.2500	14	0.1250	50
W2429	0.3750	0.9063	0.3125	15	0.1250	55
W2430	0.3750	0.9375	0.3125	15	0.1250	55
W2432	0.3750	1.0000	0.3125	13	0.1563	70
W2434	0.3750	1.0625	0.2500	13	0.1563	70
W2434B	0.3750	1.0625	0.3750	14	0.1563	75
W2436	0.3750	1.1250	0.3750	15	0.1563	80
W2438	0.3750	1.1875	0.3750	13	0.1875	105
W2440	0.3750	1.2500	0.3750	13	0.1875	105
W2441	0.3750	1.2813	0.3125	13	0.1875	105

Unground Open Ball Bearing



- Unground raceways
- Zinc plating carbon steel rings
- Hardened carbon steel balls
- Lubricant - Anti-rust oil only

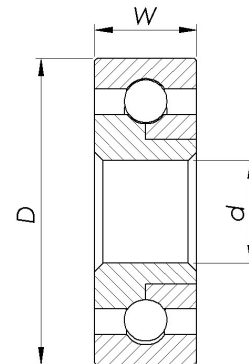


Part Number	Bore d (in) +0.005 -0.000	Outside Diameter D (in) +0.002 -0.002	Width W (in) +0.010 -0.010	No. of Balls	Ball Diameter (in)	Load Rating (lb) at 500 RPM
W2829	0.4375	0.9063	0.3125	15	0.1250	55
W2830	0.4375	0.9375	0.3125	15	0.1250	55
W2834A	0.4375	1.0625	0.3750	14	0.1563	75
W2836	0.4375	1.1250	0.3750	15	0.1563	80
W2841	0.4375	1.2813	0.3125	13	0.1875	105
W2844	0.4375	1.3750	0.4375	15	0.1875	120
W2846	0.4375	1.4375	0.5000	11	0.2500	155
W3236	0.5000	1.2500	0.3750	15	0.1563	80
W3238	0.5000	1.1875	0.3750	13	0.1875	105
W3240	0.5000	1.2500	0.3750	13	0.1875	105
W3241	0.5000	1.2813	0.3125	13	0.1875	105
W3244	0.5000	1.3750	0.4375	15	0.1875	120
W3248	0.5000	1.5000	0.4375	17	0.1875	135
W3250	0.5000	1.5625	0.4375	13	0.2500	185
W3252	0.5000	1.6250	0.3750	13	0.2500	185
W3252A	0.5000	1.6250	0.5000	13	0.2500	185
W3256	0.5000	1.7500	0.5625	14	0.2500	195
W3644	0.5625	1.3750	0.4375	15	0.1875	120
W3646	0.5625	1.4375	0.5000	16	0.1875	125
W4040	0.6250	1.2500	0.3125	17	0.1563	95
W4044	0.6250	1.3750	0.4375	15	0.1875	120
W4048	0.6250	1.5000	0.4375	17	0.1875	135
W4052	0.6250	1.6250	0.3750	13	0.2500	185
W4052A	0.6250	1.6250	0.5000	13	0.2500	185
W4064	0.6250	2.0000	0.5000	13	0.3125	285
W4448	0.6875	1.5000	0.4375	17	0.1875	135

Unground Open Ball Bearing



- Unground raceways
- Zinc plating carbon steel rings
- Hardened carbon steel balls
- Lubricant - Anti-rust oil only

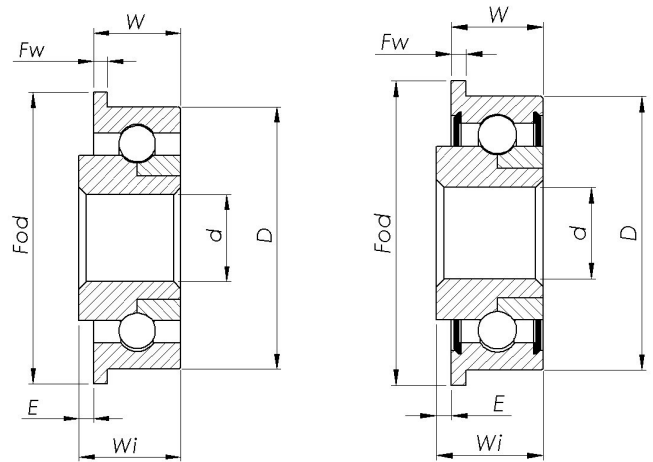


Part Number	Bore	Outside Diameter D (in)	Width W (in)	No. of Balls	Ball Diameter (in)	Load Rating (lb) at 500 RPM
	d (in)					
W4850	+0.005 -0.000	+0.002 -0.002	+0.010 -0.010	19	0.1875	150
W4852	0.7500	1.6250	0.5000	19	0.1875	150
W4852A	0.7500	1.6250	0.3750	19	0.1875	150
W4856	0.7500	1.7500	0.5625	14	0.2500	195
W4864	0.7500	2.0000	0.5000	13	0.3125	285
W4867A	0.7500	2.0751	0.6250	14	0.3125	310
W5260	0.8125	1.8750	0.5000	16	0.2500	225
W5660	0.7500	1.8750	0.5000	16	0.2500	225
W5664	0.8750	2.0000	0.5000	13	0.3125	285
W5667A	0.8750	2.0781	0.6250	14	0.3125	310
W5668	0.8750	2.1250	0.6250	15	0.3125	330
W5672	0.8750	2.2500	0.6250	13	0.3438	345
W6064	0.9375	2.0000	0.5000	17	0.2500	240
W6464	1.0000	2.0000	0.5000	17	0.2500	240
W6468	1.0000	2.1250	0.6250	15	0.3125	330
W6472	1.0000	2.2500	0.6250	15	0.3125	330
W6480	1.0000	2.5000	0.6250	14	0.3750	445
W6488	1.0000	2.7500	0.6250	16	0.3750	510
W7264	1.1250	2.0000	0.5000	24	0.1875	190
W7272	1.1250	2.2500	0.6250	19	0.2500	265
W7274	1.1250	2.3125	0.6250	18	0.2813	320
W7280	1.1250	2.5000	0.6250	17	0.3125	375
W7284	1.1250	2.6250	0.6875	18	0.3125	395
W7674	1.1875	2.3125	0.6250	18	0.2813	320
W8074	1.2500	2.3125	0.6250	21	0.2500	295
W8080A	1.2500	2.5000	0.6875	17	0.3125	375
W8084	1.2500	2.6250	0.6875	18	0.3125	395
W8088	1.2500	2.7500	0.6250	16	0.3750	510
W8880	1.3750	2.5000	0.6875	23	0.2500	325
W9688	1.5000	2.7500	0.6250	20	0.3125	440
W10499	1.6250	3.0938	0.6875	19	0.3750	600
W128108	2.0000	3.3750	0.7500	23	0.3438	610

Unground Open and Sealed Flanged Ball Bearing



- Unground raceways
- Zinc plating carbon steel rings
- Hardened carbon steel balls
- Lubricant
 - ◇ Open Bearing — Anti-rust oil only
 - ◇ Sealed Bearing — Grease filled

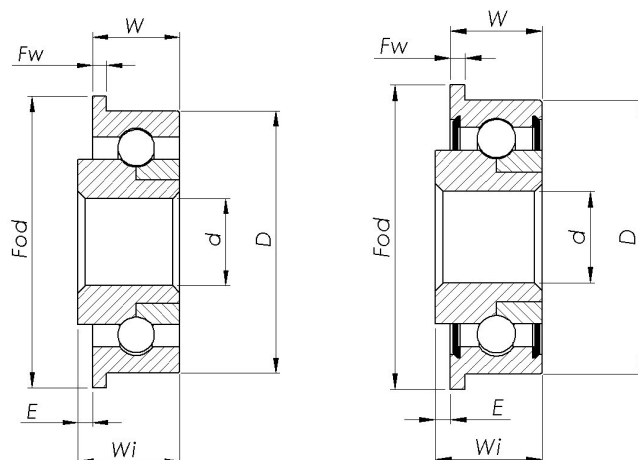


Part Number	Bore d (in)	Outside Diameter D (in)	Inner Ring Width Wi (in)	Outer Ring Width W (in)	Extended E (in)	Flange OD Fod (in)	Flange Width Fw (in)	No. of Balls	Ball Dia (in)	Load Rating (lb) at 500 RPM
	+0.005 -0.000	+0.002 -0.002	+0.010 -0.010	+0.010 -0.010						
WF0816A	0.1125	0.5000	0.2188	0.1875	0.0313	0.5625	0.04	8	0.0938	15
WF1220	0.1875	0.6250	0.2031	0.1875	0.0156	0.7185	0.04	9	0.1250	30
WF1222	0.1875	0.6875	0.3125	0.2500	0.0625	0.7813	0.04	10	0.1250	35
WF1622	0.2500	0.6875	0.3125	0.2500	0.0625	0.7813	0.04	10	0.1250	35
WF1624	0.2500	0.7500	0.3125	0.2500	0.0625	0.8281	0.04	11	0.1250	40
WF1628	0.2500	0.8750	0.3125	0.2500	0.0625	0.9688	0.04	13	0.1250	45
WF1629	0.2500	0.9063	0.3750	0.3125	0.0625	1.0313	0.04	11	0.1563	60
WF2028	0.3125	0.8750	0.3125	0.2500	0.0625	0.9688	0.04	13	0.1250	45
WF1629	0.3125	0.9063	0.3750	0.3125	0.0625	1.0313	0.04	15	0.1250	55
WF2034	0.3125	1.0625	0.4375	0.3750	0.0625	1.1875	0.05	14	0.1563	75
WF2129	0.3281	0.9063	0.4375	0.3438	0.0938	1.0313	0.04	15	0.1250	55
WF2429	0.3750	0.9063	0.3438	0.3125	0.0313	1.0313	0.04	15	0.1250	55
WF2429A	0.3750	0.9063	0.3750	0.3125	0.0625	1.0313	0.04	15	0.1250	55
WF2429B	0.3750	0.9063	0.4375	0.3438	0.0938	1.0313	0.04	15	0.1250	55
WF2434	0.3750	1.0625	0.4375	0.3750	0.0625	1.1875	0.05	14	0.1563	75
WF2436	0.3750	1.1250	0.4375	0.3750	0.0625	1.2500	0.06	15	0.1563	80
WF2444	0.3750	1.3750	0.4688	0.4375	0.0313	1.5313	0.06	10	0.2500	140
WF2448	0.3750	1.5000	0.5000	0.4375	0.0625	1.6094	0.07	10	0.2656	160
WF2829	0.4375	0.9063	0.3750	0.3125	0.0625	1.0313	0.04	15	0.1250	55
WF2829A	0.4375	0.9063	0.4375	0.3438	0.0938	1.0313	0.04	15	0.1250	55
WF2834	0.4375	1.0625	0.4375	0.3750	0.0625	1.1875	0.05	14	0.1563	75
WF2844	0.4375	1.3750	0.5625	0.4375	0.1250	1.5313	0.06	10	0.2500	140
WF3236	0.5000	1.1250	0.4375	0.3750	0.0625	1.2500	0.06	15	0.1563	80
WF3238	0.5000	1.1875	0.4375	0.3750	0.0625	1.2500	0.06	17	0.1563	95
WF3240	0.5000	1.2500	0.4375	0.3750	0.0625	1.3438	0.06	13	0.1875	105
WF3242	0.5000	1.3125	0.4375	0.3750	0.0625	1.4063	0.06	13	0.1875	105
WF3244	0.5000	1.3750	0.5000	0.4375	0.0625	1.5313	0.06	15	0.1875	120
WF3244A	0.5000	1.3750	0.5625	0.4375	0.1250	1.5313	0.06	15	0.1875	120

Unground Open and Sealed Flanged Ball Bearing



- Unground raceways
- Zinc plating carbon steel rings
- Hardened carbon steel balls
- Lubricant
 - ◇ Open Bearing — Anti-rust oil only
 - ◇ Sealed Bearing — Grease filled

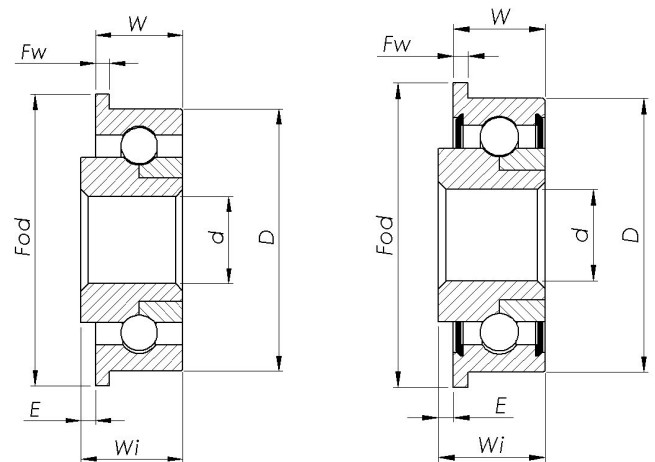


Part Number	Bore d (in)	Outside Diameter D (in)	Inner Ring Width W_i (in)	Outer Ring Width W (in)	Extended E (in)	Flange OD F_{od} (in)	Flange Width F_w (in)	No. of Balls	Ball Dia (in)	Load Rating (lb) at 500 RPM
	+0.005 -0.000	+0.002 -0.002	+0.010 -0.010	+0.010 -0.010						
WF3248	0.5000	1.5000	0.4688	0.4375	0.0313	1.6094	0.07	12	0.2500	170
WF3250	0.5000	1.5625	0.5625	0.4375	0.1250	1.7188	0.07	13	0.2500	185
WF3250A	0.5000	1.5625	0.6563	0.4375	0.2188	1.7188	0.07	13	0.2500	185
WF3252	0.5000	1.6250	0.5625	0.5000	0.0625	1.8125	0.07	13	0.2500	185
WF3252A	0.5000	1.6250	1.0000	0.5000	0.5000	1.8125	0.07	13	0.2500	185
WF3256	0.5000	1.7500	0.6250	0.5625	0.0625	1.9063	0.08	14	0.2500	195
WF3260	0.5000	1.8750	0.6250	0.5000	0.1250	2.0313	0.08	16	0.2500	225
WF3268	0.5000	2.1250	0.7500	0.6250	0.1250	2.2500	0.08	15	0.3125	330
WF3352	0.5156	1.6250	0.5625	0.5000	0.0625	1.8125	0.07	13	0.2500	185
WF3644	0.5625	1.3750	0.5000	0.4375	0.0625	1.5313	0.06	15	0.1875	120
WF3644A	0.5625	1.3750	0.5625	0.4375	0.1250	1.5313	0.06	15	0.1875	120
WF3648	0.5625	1.5000	0.5000	0.4375	0.0625	1.6094	0.07	17	0.1875	135
WF3656	0.5625	1.7500	0.6250	0.5625	0.0625	1.9063	0.09	14	0.2500	195
WF4040	0.6250	1.2500	0.4375	0.3750	0.0625	1.3438	0.06	22	0.1250	75
WF4044	0.6250	1.3750	0.5000	0.4375	0.0625	1.5313	0.06	15	0.1875	120
WF4044A	0.6250	1.3750	0.5625	0.4375	0.1250	1.5313	0.06	15	0.1875	120
WF4048	0.6250	1.5000	0.5000	0.4375	0.0625	1.6094	0.07	17	0.1875	135
WF4048A	0.6250	1.5000	0.5625	0.4375	0.1250	1.6094	0.07	17	0.1875	135
WF4050	0.6250	1.5625	0.5625	0.4375	0.1250	1.7188	0.07	13	0.2500	185
WF4052	0.6250	1.6250	0.5625	0.5000	0.0625	1.8125	0.07	13	0.2500	185
WF4056	0.6250	1.7500	0.6250	0.5625	0.0625	1.9063	0.08	14	0.2500	195
WF4067A	0.6290	2.0781	0.8750	0.6250	0.2500	2.2188	0.08	14	0.3125	310
WF4448	0.6875	1.5000	0.5000	0.4375	0.0625	1.6094	0.07	17	0.1875	135

Unground Open and Sealed Flanged Ball Bearing



- Unground raceways
- Zinc plating carbon steel rings
- Hardened carbon steel balls
- Lubricant
 - ◇ Open Bearing — Anti-rust oil only
 - ◇ Sealed Bearing — Grease filled

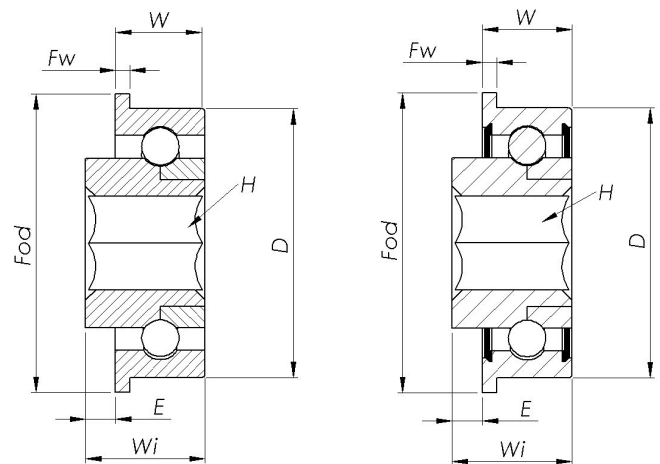


Part Number	Bore d (in)	Outside Diameter D (in)	Inner Ring Width W_i (in)	Outer Ring Width W (in)	Extended E (in)	Flange OD F_{od} (in)	Flange Width F_w (in)	No. of Balls	Ball Dia. (in)	Load Rating (lb) at 500 RPM
	+0.005 -0.000	+0.002 -0.002	+0.010 -0.010	+0.010 -0.010						
WF4844	0.7500	1.3750	0.5000	0.4375	0.0625	1.5313	0.06	25	0.1250	90
WF4850	0.7500	1.5625	0.4688	0.4375	0.0313	1.7188	0.07	19	0.1875	150
WF4856	0.7500	1.7500	0.6250	0.5625	0.0625	1.9063	0.08	14	0.2500	195
WF4860	0.7500	1.8750	0.5625	0.5000	0.0625	2.0313	0.09	12	0.3125	265
WF4864	0.7500	2.0000	0.5625	0.5000	0.0625	2.1875	0.09	13	0.3125	285
WF4868	0.7500	2.1250	0.8750	0.6250	0.2500	2.2500	0.08	15	0.3125	330
WF4872	0.7500	2.2500	0.8750	0.6250	0.2500	2.4375	0.09	13	0.3438	345
WF4874	0.7500	2.3125	0.8750	0.6250	0.2500	2.4688	0.10	13	0.3750	410
WF4980	0.7656	2.5000	0.8750	0.6250	0.2500	2.6406	0.10	14	0.3750	445
WF5098	0.7813	3.0640	1.0000	0.7500	0.2500	3.2500	0.13	12	0.5000	675
WF5660	0.8750	1.8750	0.6250	0.5000	0.1250	2.0313	0.09	16	0.2500	225
WF5680	0.8750	2.5000	0.8750	0.6250	0.2500	2.6406	0.10	14	0.3750	445
WF6464	1.0000	2.0000	0.6250	0.5000	0.1250	2.1875	0.09	17	0.2500	240
WF6468	1.0000	2.1250	0.8750	0.6250	0.2500	2.2500	0.08	15	0.3125	330
WF6472	1.0000	2.2500	0.8750	0.6250	0.2500	2.4375	0.09	15	0.3125	330
WF6474	1.0000	2.3125	0.8750	0.6250	0.2500	2.4688	0.10	13	0.3750	410
WF6480	1.0000	2.5000	0.8750	0.6250	0.2500	2.6406	0.10	14	0.3750	445
WF7280FA	1.1250	2.5000	0.8750	0.6563	0.2188	2.6406	0.10	17	0.3125	375
WF8080	1.2500	2.5000	0.8750	0.6250	0.2500	2.6406	0.10	17	0.3125	375
WF8098	1.2500	3.0640	0.8750	0.7500	0.1250	3.2500	0.13	15	0.4375	645
WF8098A	1.2500	3.0640	1.0000	0.7500	0.2500	3.2500	0.13	15	0.4375	645
WF8880	1.3750	2.5000	0.8750	0.6250	0.2500	2.6406	0.10	23	0.2500	325
WF9698	1.5000	3.0640	0.8750	0.7500	0.1250	3.2500	0.13	18	0.3750	570

Unground Flanged Ball Bearing With Hex Bore



- Unground raceways
- Zinc plating carbon steel rings
- Hardened carbon steel balls
- Lubricant
 - ◇ Open Bearing — Anti-rust oil only
 - ◇ Sealed Bearing — Grease filled



Part Number	Bore d (in)	Outside Diameter D (in)	Inner Ring Width Wi (in)	Outer Ring Width W (in)	Extended E (in)	Flange OD F _{od} (in)	Flange Width F _w (in)	No. of Balls	Ball Dia. (in)	Load Rating (lb) at 500 RPM
	+0.005 -0.000	+0.002 -0.002	+0.010 -0.010	+0.010 -0.010						
WFH2028	0.3125	0.8750	0.46875*	0.2500	0.125	0.965	0.04	13	0.1250	45
WFH2029	0.3125	0.9063	0.4375	0.3438	0.125	1.250	0.06	15	0.1250	55
WFH2036	0.3125	1.1250	0.5000	0.3750	0.125	1.250	0.06	13	0.1563	80
WFH2036	0.3125	1.1480	0.5938	0.4063	0.188	1.250	0.06	13	0.1875	105
WFH2436	0.3750	1.1250	0.5000	0.3750	0.125	1.250	0.06	15	0.1563	80
WKFH2437A	0.3750**	1.1480	0.6250	0.4063	0.219	1.250	0.06	13	0.1875	105
WFH2444	0.3750	1.3750	0.7500	0.4375	0.313	1.531	0.06	10	0.2500	140
WFH2836	0.4375	1.1250	0.5000	0.3750	0.125	1.250	0.06	15	0.1563	80
WKFH2837A	0.4375	1.1480	0.4688	0.4063	0.063	1.250	0.06	16	0.1563	90
WFH2840	0.4375	1.2500	0.5313	0.3750	0.156	1.344	0.06	13	0.1875	105
WFH2844	0.4375	1.3750	0.5625	0.4375	0.125	1.531	0.06	10	0.2500	140
WFH2848	0.4375	1.5000	0.5000	0.4375	0.063	1.609	0.07	11	0.2656	175
WFH2848A	0.4375	1.5000	0.6250	0.4375	0.188	1.609	0.07	12	0.2500	170
WFH2848B	0.4375	1.5000	0.6875	0.4375	0.250	1.609	0.07	12	0.2500	170
WFH2848C	0.4375	1.5000	0.5781	0.4375	0.141	1.609	0.07	12	0.2500	170
WFH2848F	0.4375	1.5000	0.6250	0.4688	0.156	1.609	0.07	12	0.2500	170
WFH2848FB	0.4375	1.5000	0.7188	0.4688	0.250	1.609	0.07	12	0.2500	170
WFH2848HH	0.4375	1.5000	0.5781	0.4375	0.141	1.609	0.07	12	0.2500	170
WFH2848UP	0.4375	1.5000	0.7813	0.5938	0.188	1.609	0.07	12	0.2500	170
WFH2852	0.4375	1.6250	0.5625	0.5000	0.063	1.813	0.07	13	0.2500	185
WFH2856	0.4375	1.7500	0.6875	0.5625	0.125	1.906	0.08	14	0.2500	195
WFH2860U	0.4375	1.8750	0.9375	0.6875	0.250	2.031	0.09	16	0.2500	225
WFH2868	0.4375	2.1250	0.7500	0.6250	0.125	2.250	0.08	15	0.3125	330
WFH3248	0.5000	1.5000	0.6875	0.4375	0.250	1.609	0.07	12	0.2500	170
WFH3248F	0.5000	1.5000	0.7188	0.4688	0.250	1.609	0.07	12	0.2500	170

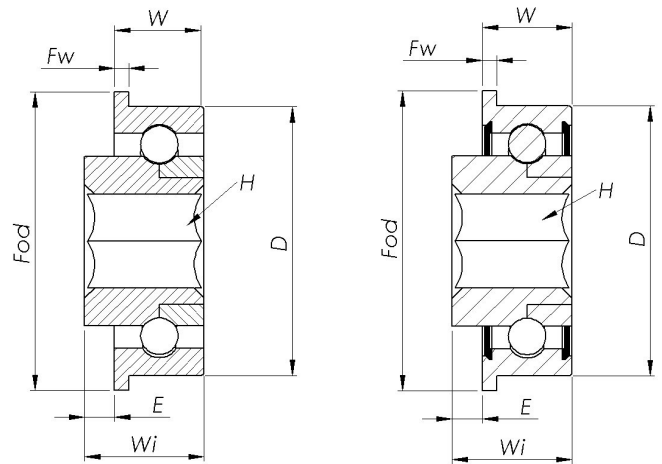
* Inner ring extended on both sides

** Bore tolerance +0.008 to +0.013 inch

Unground Flanged Ball Bearing With Hex Bore



- Unground raceways
- Zinc plating carbon steel rings
- Hardened carbon steel balls
- Lubricant
 - ◇ Open Bearing — Anti-rust oil only
 - ◇ Sealed Bearing — Grease filled



Part Number	Bore d (in) +0.005 -0.000	Outside Diameter D (in) +0.002 -0.002	Inner Ring Width Wi (in) +0.010 -0.010	Outer Ring Width W (in) +0.010 -0.010	Extended E (in)	Flange OD F _{od} (in)	Flange Width F _w (in)	No. of Balls	Ball Dia. (in)	Load Rating (lb) at 500 RPM
WFH3650	0.5625	1.5625	0.6875	0.4375	0.250	1.719	0.07	13	0.2500	185
WFH3667A	0.5625	2.0781	0.8750	0.6250	0.250	2.250	0.08	14	0.3125	310
WFH3680	0.5625	2.5000	0.8750	0.6250	0.250	2.641	0.10	14	0.3750	445
WFH3680SP	0.5625	2.5000	1.0938	0.8438	0.250	2.688	0.10	14	0.3750	445
WFH4056	0.6250	1.7500	0.8125	0.5625	0.250	1.906	0.08	14	0.2500	195
WFH4074	0.6250	2.3125	0.8750	0.6250	0.250	2.469	0.10	13	0.3750	410
WAH4472U**	0.6875	2.2500	1.0625	0.8125	0.250	—	—	12	0.3750	380
WFH4472	0.6875	2.2500	0.8750	0.6250	0.250	2.438	0.09	13	0.3438	345
WFH4474	0.6875	2.3125	0.8750	0.6250	0.250	2.469	0.10	13	0.3750	410
WAH4474UP**	0.6875	2.3125	1.2188	0.8438	0.375	—	—	13	0.3750	410
WAH4474UR**	0.6875	2.3125	1.2188	0.8438	0.375	—	—	13	0.3750	410
WFH4864	0.7500	2.0000	0.7500	0.5000	0.250	2.188	0.09	17	0.2500	240
WFH6898	1.0625 Δ	3.0640	1.0000	0.7500	0.250	3.250	0.13	15	0.4375	645
WAH6898UP**	1.0625 Δ	3.0640	1.2969	1.0469	0.250	—	—	15	0.4375	645

** These bearings do not have flanges.

Δ Bore tolerance +0.008 to +0.015 inch