



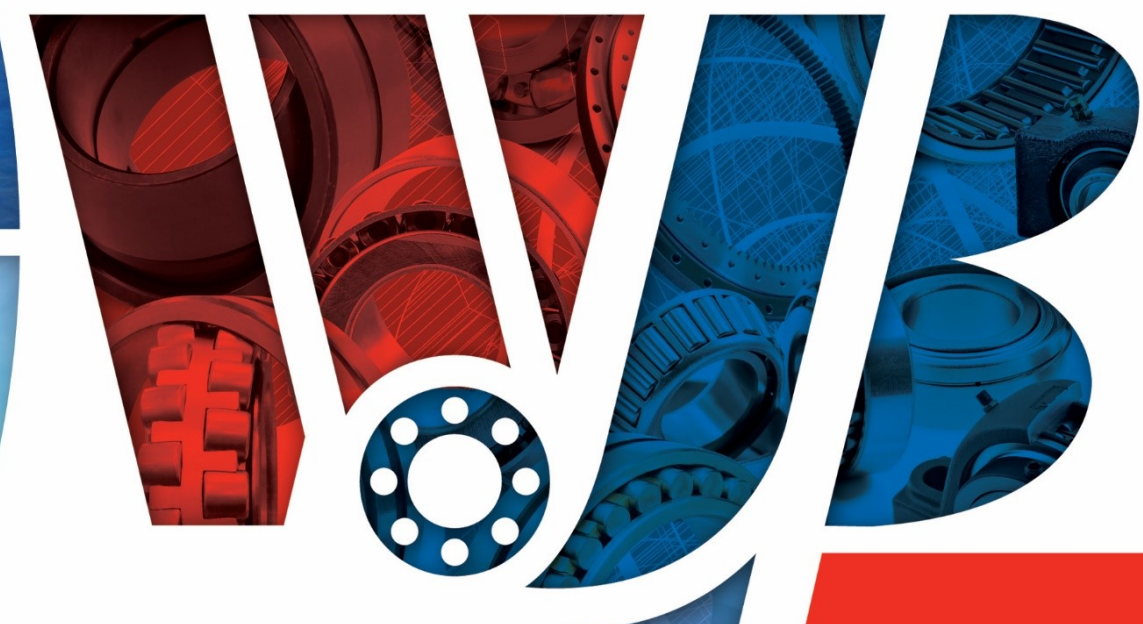
WJB Headquarters
 535 Brea Canyon Road
 City of Industry, CA 91789
 Phone: 909.598.6238

WJB North Carolina
 725 Shea road
 Newton, NC 28658
 Phone: 828.353.0091

Fax: 909.598.7939
 Toll Free: 800.572.1688
 Email: info@wjbgroup.com
www.wjbgroup.com



Printed in USA © 2019 WJB Group
 BBOV2019



KEEP YOUR
 BUSINESS ROLLING

www.wjbgroup.com

HISTORY

Established in 1992, WJB has focused and excelled in the bearing industrial and automotive markets. Since its inception, WJB has built a high level of technical competence and is now recognized as a market leader. WJB Bearings is quickly becoming the global industry standard and continues to make contributions to the industrial and automotive industry with high-precision products and broader product selections.



PHILOSOPHY

WJB Bearings provides our global industrial and automotive customers with unique design solutions to complex problems and an unparalleled level of service and quality, in addition to solid engineering supports. At WJB, we understand the importance of producing a wide range of premium products that are competitively priced.

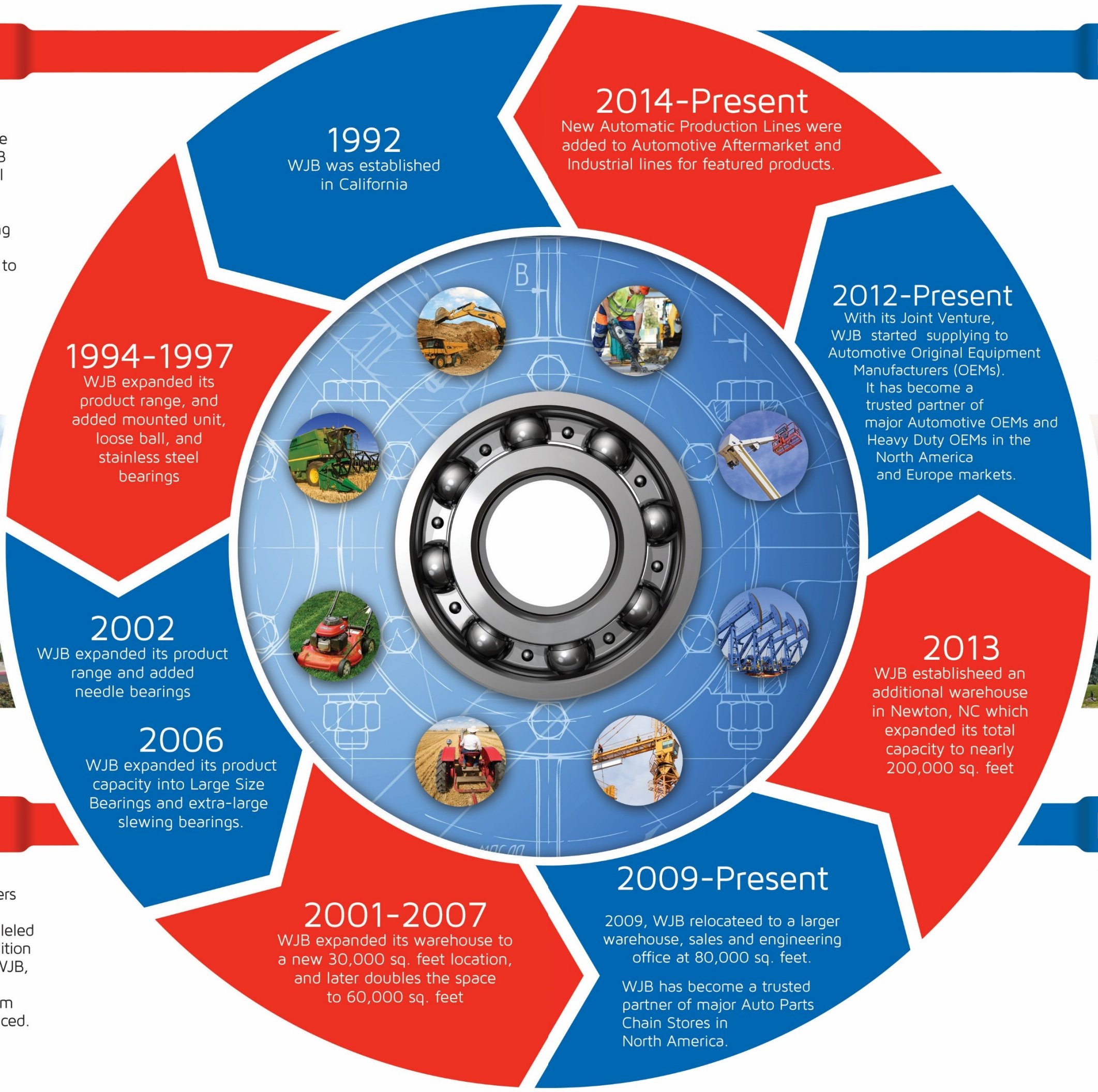
ENGINEERING

WJB is experienced and skilled in the design, manufacturing, and supply of a wide range of bearing products. Our manufacturing facilities have been awarded ISO9001 and TS16949 certifications. WJB has a worldwide network of manufacturing, research, and development facilities to assist with your bearing needs. We are able to develop and implement customized bearing solutions for complex mechanical systems using the latest analytics software. Around the world, companies in the industrial and automotive industries have trusted WJB's expertise to improve their performance by utilizing WJB's products and services.



MISSION

WJB is committed to providing customers with the best possible quality products at the best possible price. As a company, we strive to always satisfy the high demands placed upon us by our customers. We never forget our success is built upon our customers' success.



« RADIAL BALL BEARINGS

- ⊙ Single and double row bearings
- ⊙ Conrad ball bearing, angular contact bearings, self-aligned bearing, and flanged bearing
- ⊙ **Bearing material:** Chrome bearing steel or stainless steel
- ⊙ Extended ring, groove with/without snap ring
- ⊙ **Cage material:** carbon steel, stainless steel, nylon 6/6; nylon 6/6 GF 30%, etc.
- ⊙ **Cage type:** stamped steel, molded nylon, and machined brass or phenolic
- ⊙ **Seal/shield material:** Buna-N, ACM, EPDM, Viton, Silicone, PTFE, carbon steel, 300 SS stainless steel, etc.
- ⊙ With cage or full ball complement (no cage)
- ⊙ Inch and metric series available
- ⊙ Special configurations, features and sizes – please contact us

AGRICULTURE BEARINGS »

- ⊙ Single row bearings
- ⊙ Conrad ball bearing, self-aligned bearing
- ⊙ **Bearing material:** Chrome bearing steel or stainless steel
- ⊙ Extended ring, groove with/without snap ring, square bore, hex bore, spherical OD, etc.
- ⊙ **Seal type:** trash seals, shielded or seals, tri-ply available upon request
- ⊙ **Cage material:** carbon steel, stainless steel, nylon 6/6; nylon 6/6 GF 30%, etc.
- ⊙ **Cage type:** stamped steel, molded nylon, and machined brass or phenolic
- ⊙ With cage or full ball complement (no cage)



« CYLINDRICAL ROLLER BEARINGS

- ⊙ Single and double row bearings
- ⊙ **Bearing material:** Chrome bearing steel, stainless steel or case hardened steel
- ⊙ **Cage material:** carbon steel, stainless steel, nylon 6/6; nylon 6/6 GF 30%, brass/bronze, etc.
- ⊙ **Cage type:** one piece stamped, riveted, molded nylon, and machined
- ⊙ With or without lubrication holes
- ⊙ Inch and metric series available
- ⊙ Special configurations, features and sizes – please contact us





« LINEAR MOTION PRODUCTS

- ⊙ Shafting
 - ⊙ Carbon steel, stainless steel, and chrome plated
 - ⊙ Also available extra deep case hardened and hollow shaft with OD larger than ½ inch (~12 mm)
 - ⊙ Cut-to-length per customer requirements
 - ⊙ Additional machining operations or custom designed shafting can be manufactured per specific customer or application requirements
- ⊙ Aluminum Pillow Block Assemblies with seals; Open or closed version
- ⊙ Steel and polymer housing linear ball bearing with self-alignment and seals
- ⊙ Steel and aluminum shaft support

MOUNTED BEARING UNITS



- ⊙ **Housing material:** cast iron, stainless, thermal plastic
- ⊙ **Insert Bearing:** chrome bearing steel or stainless steel with/without self-aligned feature
- ⊙ **Seal type:** trash seals, shielded or seals, tri-ply available upon request
- ⊙ Non-lube and re-lube feature
- ⊙ Set lock screws and eccentric locking collar available
- ⊙ Pillow block, tapped based, 2-4 bolts flanges, etc.



« TAPER ROLLER BEARINGS

- ⊙ Single and double row bearings
- ⊙ **Bearing material:** Chrome bearing steel or stainless steel
- ⊙ **Cage material:** carbon steel, stainless steel, nylon 6/6; nylon 6/6 GF 30%, brass/bronze, etc.
- ⊙ **Cage type:** one piece stamped, riveted, molded nylon, and machined
- ⊙ Inch and metric series available
- ⊙ Special configurations, features and sizes – please contact us



« SPHERICAL ROLLER BEARINGS (DOUBLE ROW)

- ⊙ **Bearing material:** Chrome bearing steel
- ⊙ **Seal/shield:** open or sealed bearing
- ⊙ **Cage material:** carbon steel, brass/bronze, etc.
- ⊙ **Cage type:** one piece stamped, machined
- ⊙ With or without lubrication holes
- ⊙ Inch and metric series available
- ⊙ Special configurations, features and sizes – please contact us



SLEWING BEARINGS

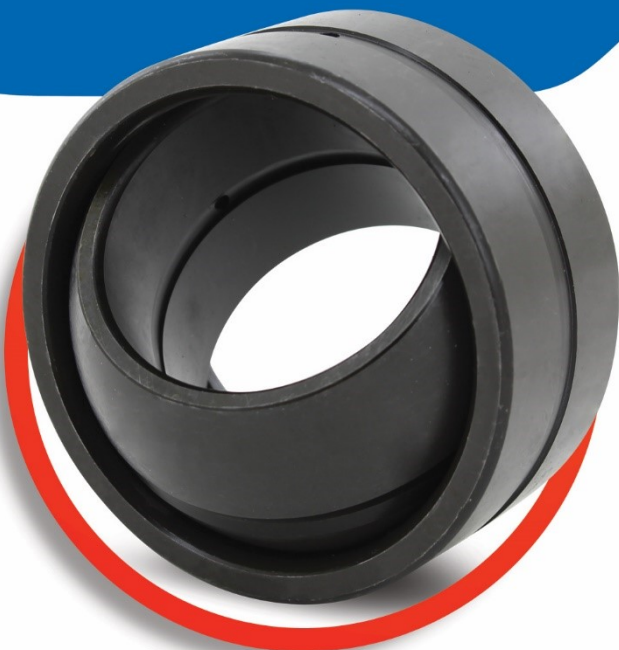


- ⊙ Case carburized steel
- ⊙ Single row, double row, single cross-roller, triple rows roller
- ⊙ Internal gear, external gear or none
- ⊙ Mounting holes, grease fitting, lifting hole
- ⊙ Nylon spacers
- ⊙ Open or sealed
- ⊙ Size: ϕ 100 mm to ϕ 5,000 mm



« SPHERICAL PLAIN BEARINGS

- ⊙ Chrome bearing steel, stainless steel, corrosion protection coating or plating
- ⊙ High mis-alignment, wide and narrow body, self-lubricating
- ⊙ **Ball material:** hardened steel, brass, stainless steel
- ⊙ PTFE liner, re-lube capability
- ⊙ Inch and metric series available
- ⊙ Special configurations, features and sizes – please contact us





« NEEDLE ROLLER BEARINGS

- ⦿ Drawn cup, clutch type, heavy duty, axial (thrust) bearings and washers
- ⦿ Open, closed cup, sealed
- ⦿ Carbon steel with case carburized, chrome bearing steel
- ⦿ **Cage material:** carbon steel with case carburized, nylon 6/6; nylon 6/6 GF 30%, brass/bronze, etc.
- ⦿ **Cage type:** one piece stamped, molded nylon, and machined
- ⦿ With or without lubrication holes
- ⦿ Inch and metric series available
- ⦿ Special configurations, features and sizes – please contact us

SPROCKETS AND CHAINS



- ⦿ Carbon steel, case hardened steel, stainless steel, corrosion protection coating or plating
- ⦿ Standard roller chain/ timing belt teeth profiles, etc.
- ⦿ Single and multi-strand sprockets
- ⦿ Stock bore, finished bore with key way, two set screws, and heat treated teeth available
- ⦿ Single, double & triple strand roller chain and bushing chain
- ⦿ ANSI standard, heavy & conveyor series, carbon & stainless steel, and corrosion resistance available
- ⦿ Attachment chain in all varieties/styles available
- ⦿ Inch and metric series - ¼ inch (25) to 3 inch (240) pitch
- ⦿ Special configurations, features and sizes – please contact us



« SPECIALTY PRODUCTS

- ⦿ Single or double row bearing with special features
- ⦿ Bearings with molded plastic (rubber, nylon, polyurethane, etc.) on the outer diameter
- ⦿ Sub-assembly (bearing pre-installed on a shaft or in a housing)
- ⦿ Bearing with spherical OD for misalignment
- ⦿ Extra wide double row bearing with guiding and riding groove on bearing OD such as V-groove or full radius
- ⦿ Rod end – Available with various material (body and balls) and with non-metal liner, female and male thread, left and right hand thread, with grease zerks, protection coating, inch or metric series, and special configurations