



**WJB BEARINGS**

**BEARINGS FOR  
CONSTRUCTION  
AND MINING  
INDUSTRIES**

[www.wjbgroup.com](http://www.wjbgroup.com)



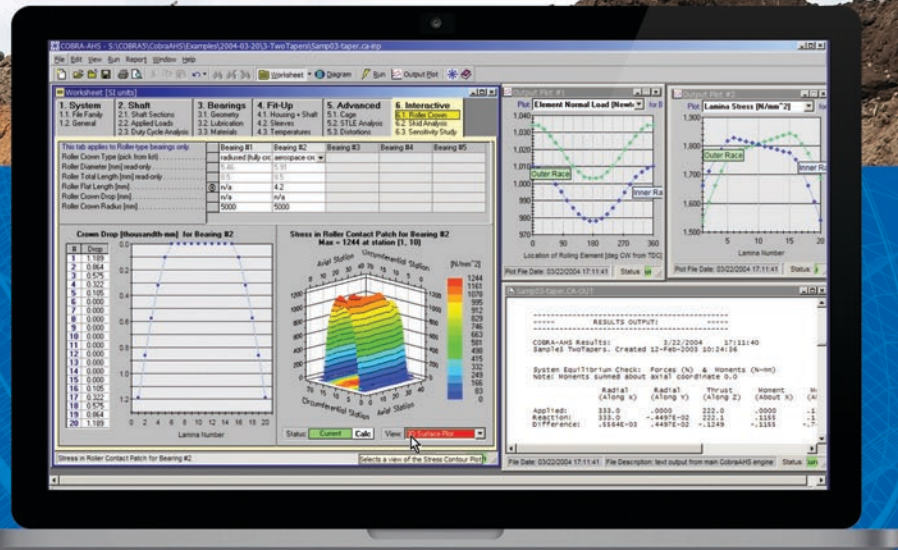
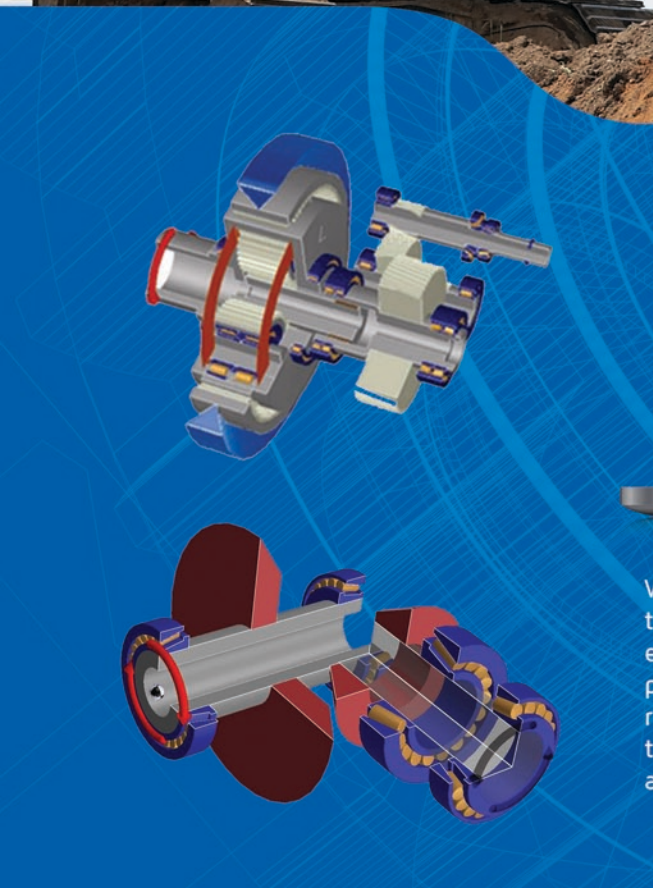




# BEARINGS FOR THE CONSTRUCTION EQUIPMENT INDUSTRY

Operating conditions for bearings in the construction industry can be extremely severe and bearings are subjected to extreme loads and contamination. WJB has a long history of supplying bearings to the construction industry that can withstand severe operating environments. WJB bearings are designed and manufactured for longevity and offer high reliability which gives our customers increased productivity and lower annual maintenance costs. As a major supplier to many heavy equipment OEMs, we work with engineers and designers of heavy equipment to provide the most cost-effective and value-added bearing solutions for their applications.

WJB's unmatched level of customer service, quality, inventory, and technical support from our USA based facilities is just a phone call away. WJB has over 200,000 sq. feet of warehouse space located in CA and NC, which will support your immediate needs with access to over \$30 million in inventory.



WJB has made significant investments in technology and we have utilized the latest software analytical tools that include solid modeling, finite element analysis, and state-of-the-art bearing design. These tools provide WJB with unique capabilities in assisting customers to select the right bearing for their applications. These software programs can also help to identify potential bearing or system problems for existing customer applications.



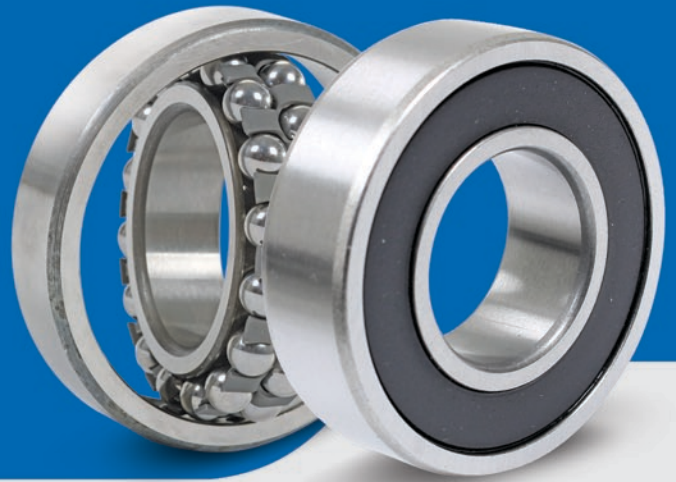
# COMMON BEARINGS USED IN THE CONSTRUCTION EQUIPMENT INDUSTRY





## RADIAL BALL BEARINGS

WJB has a broad offering of single row and double row radial ball bearing configurations with bore sizes of 0.5 inches (12.7 mm) or greater. Bearings with larger bore sizes or custom configurations may be available upon request. WJB radial ball bearings are manufactured from through hardened bearing steel with low impurity to withstand heavy impact loads and provide longer bearing life. WJB radial ball bearings are made from high quality bearing steel and manufactured at state-of-the-art ISO-9001 and/or ISO/TS16949 certified manufacturing facilities to achieve an uncompromised level of quality performance.



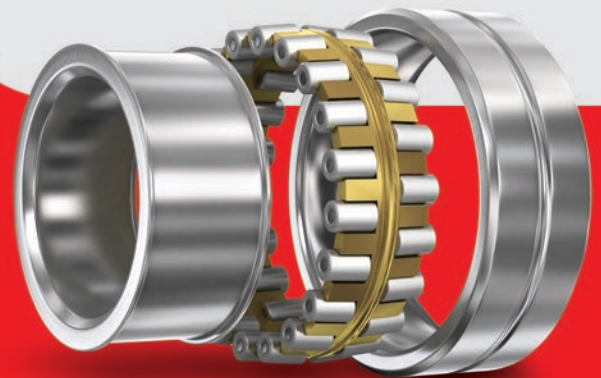
## TAPERED ROLLER BEARINGS

WJB provides a wide range of tapered roller bearings in single row and double row configurations with bore sizes of 1 inch (25.4 mm) or greater. WJB tapered roller bearings are manufactured from through hardened bearing steel or case hardened steel that provides a rugged and durable ductile core material to withstand heavy impact loads. WJB tapered roller bearings are made from high quality bearing steel and manufactured at state-of-the-art ISO-9001 and/or ISO/TS16949 certified manufacturing facilities to achieve an uncompromised level of quality performance.



## CYLINDRICAL ROLLER BEARINGS

WJB cylindrical roller bearings are available in both machined bronze pin type retainers/cages and full complement styles. Standard and custom sizes are available upon request in single row, double row, and multi-row versions. WJB cylindrical roller bearings are also available with low impurity case hardened steel for the inner ring, outer ring, and rollers. The case hardened material provides a tough, ductile core material enhancing the bearing's ability to withstand heavy impact loads without sacrificing performance.



## SELF ALIGNING THRUST BEARINGS

WJB produces a broad range of thrust bearings. Our heavy duty tapered roller thrust bearings are available with a bore range of 4 inches (101 mm) to 16 inches (406 mm). WJB's heavy duty tapered roller thrust bearings are designed for demanding applications in harsh environments where angular misalignment or axial loads are present. These bearings are manufactured from through hardened or case hardened steel washers and rollers with a machined bronze cage. The end of the rollers incorporate profiled ground ends with a counter-bore to reduce friction and improve lubrication at the guiding rib surfaces of the cage. These specially designed bearings are suitable for applications where high thrust and/or shock loads are present. Full complement roller versions are also available for low speed and extremely heavy loaded applications where maximum capacity is required.





## SPHERICAL ROLLER BEARINGS

WJB also produces double row spherical roller bearings with bearing bores from 4 inches (101 mm) to 16 inches (406 mm) and one-piece machined bronze retainer/cage. WJB's heavy duty spherical roller bearings are designed for demanding applications in harsh environments.

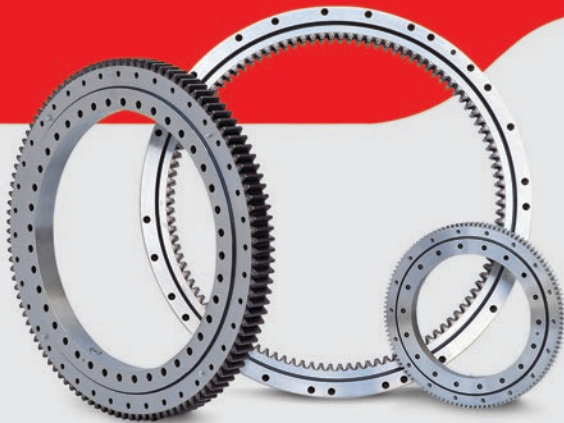
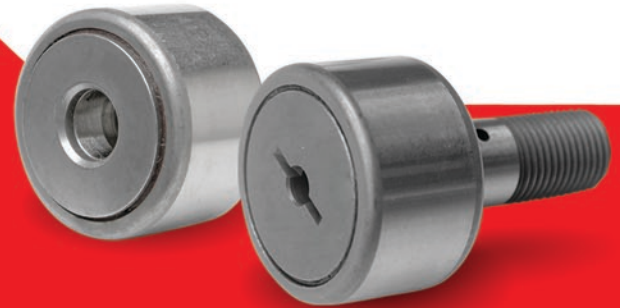


## ROTARY TABLE BEARINGS

WJB manufactures high quality Rotary Table Bearings for use in rotary table designs from 20 inches (506 mm) to 60 inches (1,524 mm) in diameter. WJB's full product line of Rotary Table Bearings are made from high quality bearing steel and manufactured at state-of-the-art ISO-9001 and/or ISO/TS16949 certified manufacturing facilities to achieve an uncompromised level of quality performance.

## CAM FOLLOWERS AND ROLLERS

WJB has a full line of stud cam followers and yoke rollers that are suitable for applications where heavy shock loads, high rotational speeds, and corrosion are major problems. Our cam followers and yoke rollers are available with a black oxide coating and grease fittings for ease of re-lubrication. Special coatings and materials such as thin dense chrome or nickel plating and stainless steel are available for enhanced corrosion protection.



## SLEWING BEARINGS

WJB also has the capability to design and manufacture slewing ring bearings ranging from 10 inches (250 mm) to 195 inches (5,000 mm) in diameter. Our slewing ring bearings are available with internal and external gears if needed. Styles range from single row ball, double row ball, single row roller, and multiple row rollers. Our products are widely used by original equipment manufacturers (OEMs) in construction equipment, engineering machines, port/harbor cranes, metallurgical equipment, light industrial machines, windmill generators, medical treatment CT equipment, defense/military equipment,

## MOUNTED BEARING UNITS

WJB mounted units are available with sealed single-row ball bearings, a spherical outer diameter and an extended inner ring which is mounted in a pillow block or flanged housing. The spherical fit of the insert bearing mounted into the housing will accommodate any initial misalignment. WJB mounted units are also available with "flinger-steel shields" that keep contaminants away from the bearing seal, improve the seal performance and extend the bearing life. Housings are available in cast iron, stainless steel, thermoplastic, ductile iron, nickel plated cast iron and with a variety of shaft locking styles (set screw, eccentric locking collar, concentric locking collar, adapter, etc.).

\*Additional sealing options and protective caps are available upon request







WJB is experienced and skilled in the design, manufacturing, and supply of a wide range of bearing products. Our manufacturing facilities have been awarded ISO9001 and TS16949 certifications. WJB has a worldwide network of manufacturing, research, and development facilities to assist with your bearing needs. We are able to develop and implement customized bearing solutions for complex mechanical systems using the latest analytics software. Around the world, companies in the industrial and automotive industries have trusted WJB's expertise to improve their performance by utilizing WJB's products and services.



**WJB Headquarters**

535 Brea Canyon Road  
City of Industry, CA 91789  
Phone: 909.598.6238

Fax: 909.598.7939  
Toll Free: 800.572.1688  
Email: [info@wjbgroup.com](mailto:info@wjbgroup.com)

**WJB North Carolina**

725 Shea road  
Newton, NC 28658  
Phone: 828.353.0091

[www.wjbgroup.com](http://www.wjbgroup.com)

