



Nickel Plated

WJB provides cost-saving solutions when the contamination conditions are not severe. With nickel plated housings and black oxide inserts, WJB provides an affordable combination which is ideal for applications where moderate corrosion resistance required.

Stainless Steel Units

WJB all stainless steel bearing units provide excellent corrosion resistance to all extreme conditions, such as moisture/corrosion conditions, water wash down conditions, sulfuric or acetic acids wash down conditions, etc. WJB stainless steel housings are designed with a solid base and smooth surface which allows water to easily flow down for daily cleaning purpose.

PBT Thermoplastic Housings with Stainless Steel Bearings

WJB thermoplastic housings can provide excellent chemical resistant in severe wash down conditions. They are resistant to moisture absorption and have high mechanical properties. The reinforced PBT (Polybutylene Terephthalate) is composed of 10% long strand glass fiber which gives WJB thermoplastic housing unit superior tensile strength up to 17,300 PSI.

Material Specifications— Stainless Steel Insert Bearing

- Inner Ring — AISI 440C or equivalent;
- Outer Ring — AISI 440C or equivalent
- Steel Ball — AISI 440C or equivalent
- Seal & Seal Insert — NBR or silicone rubber seals with AISI 304 seal insert
- Retainer — AISI302, AISI304 or equivalent
- Set Screw — AISI304 or equivalent
- Grease — ExxonMobil FM222 or equivalent food grade grease

Material Specifications— Coated Chrome Steel Insert Bearing

- Inner Ring — Black oxide plated GCr15 Steel
- Outer Ring — Black oxide plated GCr15 Steel
- Steel Ball — GCr15 Steel
- Seal & Seal Insert — NBR or silicone rubber seals with AISI 304 seal insert
- Retainer — GCr15 Steel
- Set Screw — Black oxide plated steel
- Grease — ExxonMobil FM222 or equivalent food grade grease

Material Specifications— Housings

- Stainless Steel Housing — AISI304 or equivalent
- PBT Housing — PBT Glass filled thermoplastic housing
- Nickel Plated Housing — nickel plated (0.001" thick) over HT200 cast iron housings
- Zinc Plated Housing — zinc plated (0.001" thick) over HT200 cast iron housings
- Zerk fitting — AISI 304 stainless steel zerk or zinc plated steel zerk

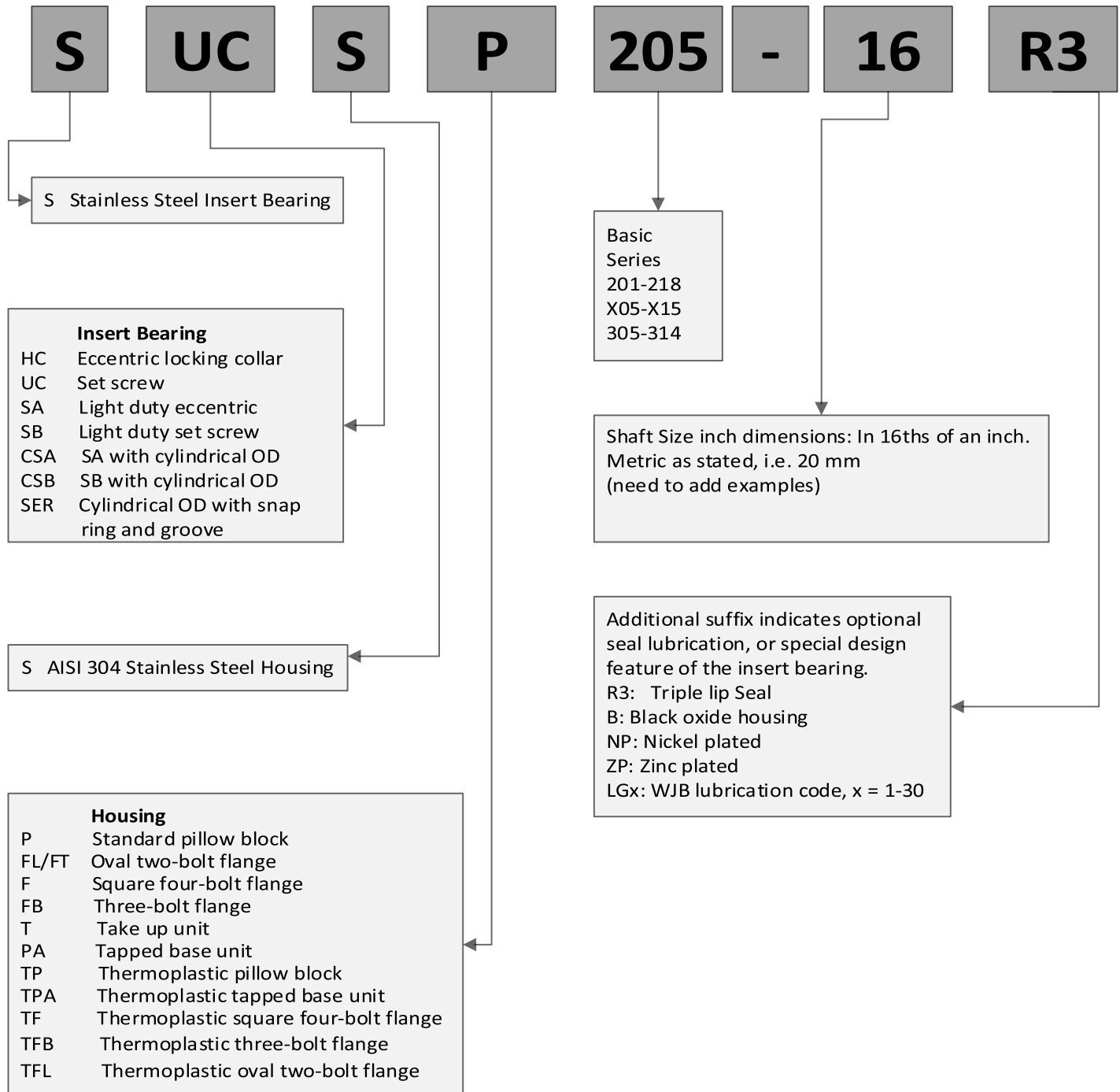
WJB Corrosion-Resistant Bearing Units



Part Number Nomenclature

Part Number Nomenclature

Each stainless steel housing unit part number from WJB is a unique combination indicating the unit's type, series, housing, insert bearing, seal type and shaft size. Please contact with WJB Engineering Department for your specific application.

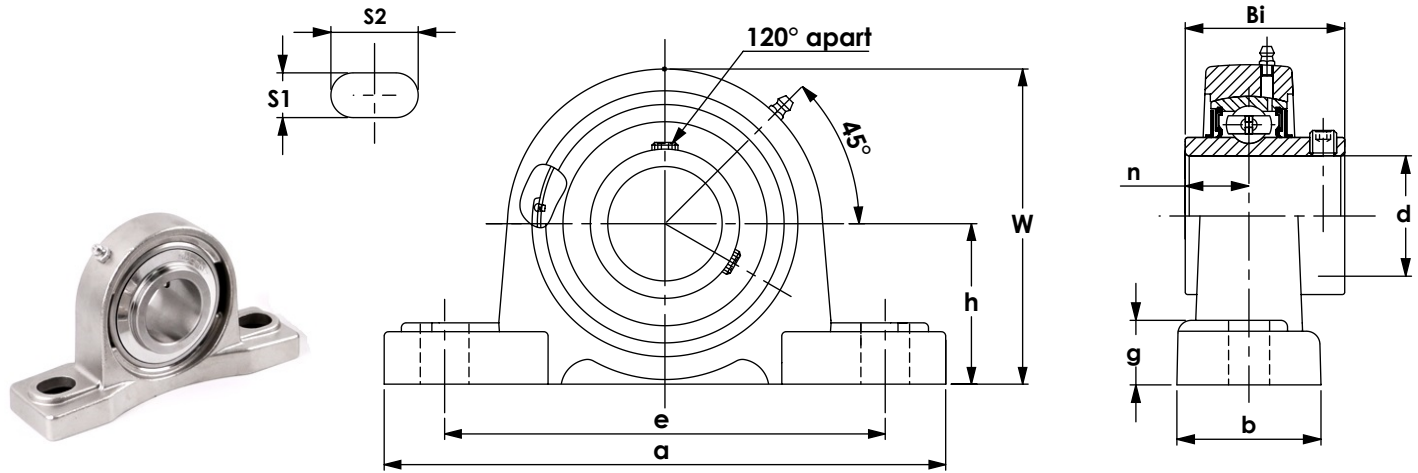


All Stainless Steel Pillow Blocks



SUCSP200 Series, High Center Height, Set Screw Locking

- ◆ Stainless steel standard duty housing (AISI 304 or equivalent)
- ◆ Stainless steel insert bearing
- ◆ Solid foot housing design
- ◆ Relubricatable unit with anti-rotation pin
- ◆ Standard seal : SR type seal or single lip seal
- ◆ Triple lip seal is available upon request
- ◆ Supplied with food grade grease FM222



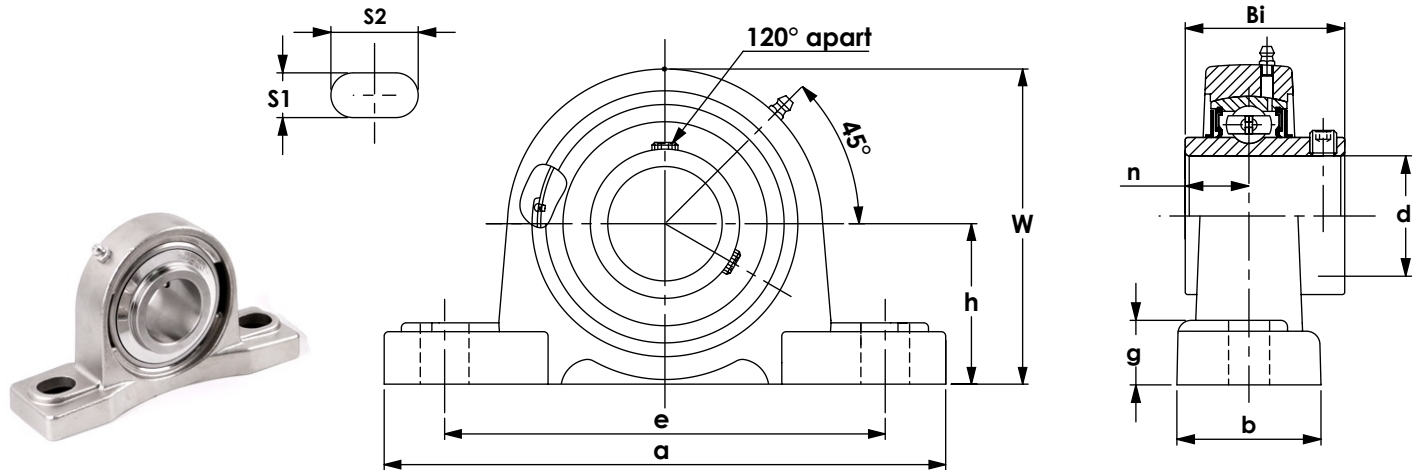
WJB Unit No.	Shaft Dia.		Dimensions										Bolt Size		Bearing No.	Housing No.	Weight kg
	d		h	a	e	b	S2	S1	g	W	Bi	n					
	in.	mm	mm	mm	mm	mm	mm	mm	mm	mm	mm	mm	in.	mm			
SUCSP 201-8	1/2		33.3	127	95	38	16	13	16	70	31	12.7	3/8	M10	SUC 201-8	SP204	0.82
202-10	5/8		1.311	5.000	3.740	1.496	0.630	0.512	0.630	2.756	1.220	0.500					
SUCSP 204-12	3/4		33.3	127	95	38	16	13	16	70	31	12.7	3/8	M10	SUC 204-12	SP204	0.73
204		20	1.311	5.000	3.740	1.496	0.630	0.512	0.630	2.756	1.220	0.500					
SUCSP 205-14	7/8		36.5	139	105	38	17	13	16	70	34	14.3	3/8	M10	SUC 205-14	SP205	0.95
205-15	15/16																
205-16	1																
205		25															
SUCSP 206-18	1 1/8		42.9	163	121	47	21	14	18	84	38.1	15.9	1/2	M14	SUC 206-18	SP206	1.50
206-19	1 3/16																
206-20	1 1/4																
206		30															
SUCSP 207-20	1 1/4		47.6	166	127	48	22	14	19	94	42.9	17.5	1/2	M14	SUC 207-20	SP207	1.90
207-21	1 5/16																
207-22	1 3/8																
207-23	1 7/16																
207		35															

All Stainless Steel Pillow Blocks



SUCSP200 Series, High Center Height, Set Screw Locking

- ◆ Stainless steel standard duty housing (AISI 304 or equivalent)
- ◆ Stainless steel insert bearing
- ◆ Solid foot housing design
- ◆ Relubricatable unit with anti-rotation pin
- ◆ Standard seal : SR type seal or single lip seal
- ◆ Triple lip seal is available upon request
- ◆ Supplied with food grade grease FM222



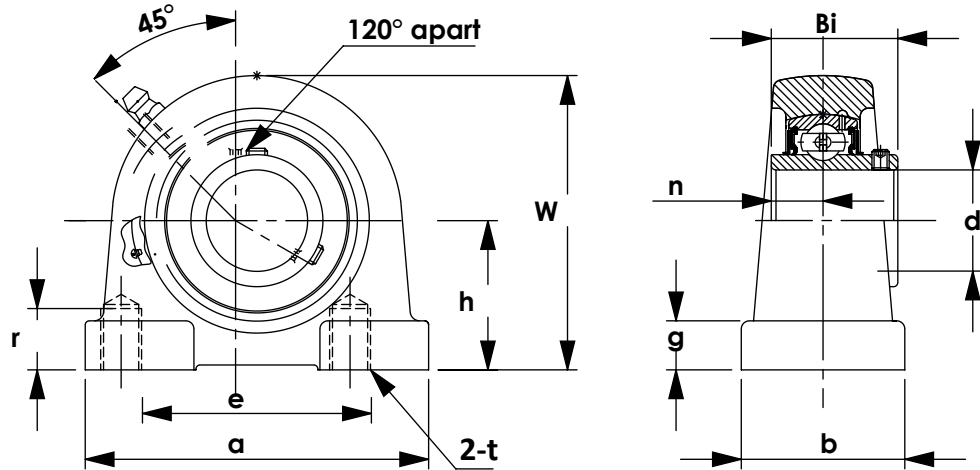
WJB Unit No.	Shaft Dia.		Dimensions										Bolt Size		Bearing No.	Housing No.	Weight kg
	d		h	a	e	b	S2	S1	g	W	Bi	n					
	in.	mm	mm	mm	mm	mm	mm	mm	mm	mm	mm	mm	in.	mm			
SUCSP 208-24 208	1 1/2	40	49.2	184	136	51	22	14	20	100	49.2	19	1/2	M14	SUC 208-24 208	SP208	2.45
SUCSP 209-26 209-27 209-28 209	1 5/8 1 11/16 1 3/4	45	54	190	146	52	21	15	20	107	49.2	19.0	1/2	M14	SUC 209-26 209-27 209-28 209	SP209	2.63
SUCSP 210-30 210-31 210-32 210	1 7/8 1 15/16 2	50	57.2	203	159	59	24	18	22	114	51.6	19.0	5/8	M16	SUC 210-30 210-31 210-32 210	SP210	3.18
SUCSP 211-32 211-34 211-35 211	2 2 1/8 2 3/16	55	63.5	217	174	60	24	18	22	125	55.6	22.2	5/8	M16	SUC 211-32 211-34 211-35 211	SP211	4.00
SUCSP 212-36 212-39	2 1/4 2 7/16		69.8	240	187	64	25	20	25	137	65.1	25.4	5/8	M16	SUC 212-36 212-39	SP212	5.08

All Stainless Steel Tapped Base Unit

SUCSPA200 Series, Set Screw Locking



- ◆ Stainless steel standard duty housing (AISI 304 or equivalent)
- ◆ Stainless steel insert bearing
- ◆ Solid foot housing design
- ◆ Relubricatable unit with anti-rotation pin
- ◆ Standard seal : SR type seal or single lip seal
- ◆ Triple lip seal is available upon request
- ◆ Supplied with food grade grease FM222



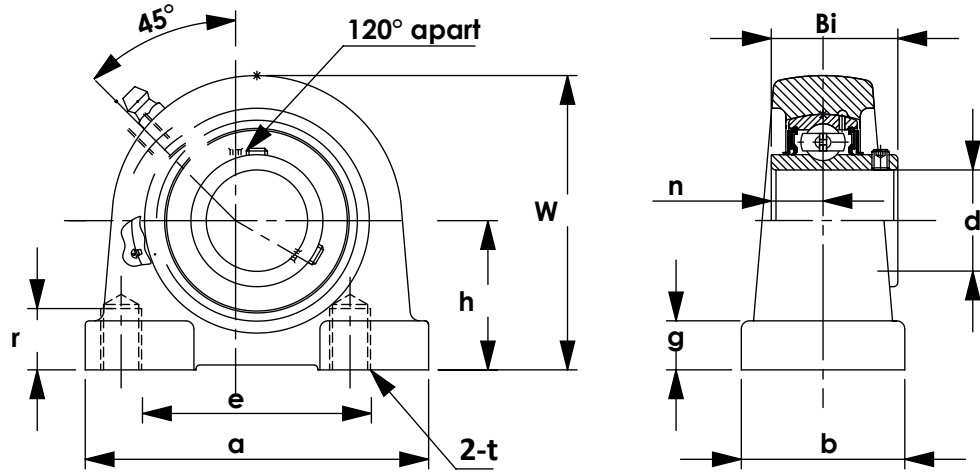
WJB Unit No.	Shaft Dia.		Dimensions									Bearing No.	Housing No.	Weight
	d		h	a	e	b	t	r	W	Bi	n			
	in.	mm	mm in.	mm in.	mm in.	mm in.	mm in.	mm in.	mm in.	mm in.	mm in.			kg
SUCSPA 201-8	1/2	12	33.3	73	50.8	38	3/8-16	13	65	31	12.7	SUC 201-8	SPA204	0.68
202-10	5/8		1.311	2.874	2.000	1.496	UNC	0.512	2.559	1.220	0.500	202-10		
SUCSPA 204-12	3/4		33.3	73	50.8	38	3/8-16	13	65	31	12.7	SUC 204-12	SPA204	0.64
204	20		1.311	2.874	2.000	1.496	UNC	0.512	2.559	1.220	0.500	204		
SUCSPA 205-14	7/8											SUC 205-14	SPA205	0.82
205-15	15/16		36.5	76	50.8	38	3/8-16	13	71	34.1	14.3	205-15		
205-16	1		1.437	2.992	2.000	1.496	UNC	0.512	2.795	1.343	0.563	205-16		
205	25											205		
SUCSPA 206-18	1 1/8											SUC 206-18	SPA206	1.32
206-19	1 3/16		42.9	102	76.2	38	7/16-14	16	86	38.1	15.9	206-19		
206-20	1 1/4		1.689	4.016	3.000	1.496	UNC	0.630	3.386	1.500	0.626	206-20		
206	30											206		
SUCSPA 207-20	1 1/4											SUC 207-20	SPA207	1.72
207-21	1 5/16		47.6	108	82.6	48	1/2-13	19	95	42.9	17.5	207-21		
207-22	1 3/8		1.874	4.252	3.252	1.890	UNC	0.748	3.740	1.689	0.689	207-22		
207-23	1 7/16											207-23		
207	35											207		

All Stainless Steel Tapped Base Unit

SUCSPA200 Series, Set Screw Locking



- ◆ Stainless steel standard duty housing (AISI 304 or equivalent)
- ◆ Stainless steel insert bearing
- ◆ Solid foot housing design
- ◆ Relubricatable unit with anti-rotation pin
- ◆ Standard seal : SR type seal or single lip seal
- ◆ Triple lip seal is available upon request
- ◆ Supplied with food grade grease FM222



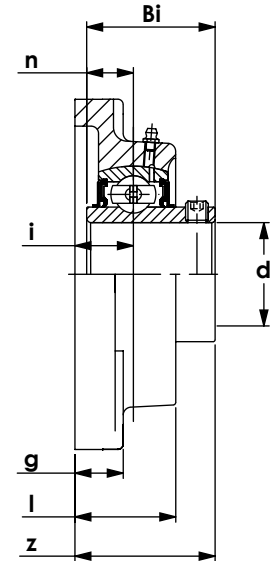
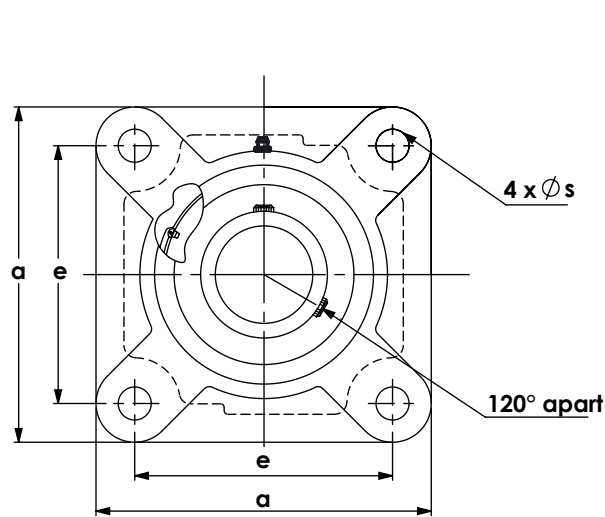
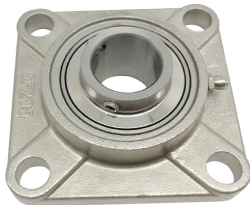
WJB Unit No.	Shaft Dia.		Dimensions									Bearing No.	Housing No.	Weight
	d		h	a	e	b	t	r	W	Bi	n			kg
	in.	mm	mm	mm	mm	mm	mm	mm	mm	mm	mm			
SUCSPA 208-24 208	1 1/2		49.2	117	88.9	48	1/2-13	19	100	49.2	19.0	SUC 208-24 208	SPA208	1.91
		40	1.937	4.606	3.500	1.890	UNC	0.748	3.937	1.937	0.748			
SUCSPA 209-26 209-27 209-28 209	1 5/8 1 11/16 1 3/4		54	127	95.3	51	1/2-13	19	108	49.2	19.0	SUC 209-26 209-27 209-28 209	SPA209	2.40
		45	2.126	5.000	3.752	2.008	UNC	0.748	4.252	1.937	0.748			
SUCSPA 210-30 210-31 210-32 210	1 7/8 1 15/16 2		57.2	140	101.6	51	5/8-11	22	117	51.6	19.0	SUC 210-30 210-31 210-32 210	SPA210	2.81
		50	2.252	5.512	4.000	2.008	UNC	0.866	4.606	2.031	0.748			

All Stainless Steel Flange Units

SUCSF200 Series, 4-Bolts, Set Screw Type



- ◆ Stainless steel standard duty housing (AISI 304 or equivalent)
- ◆ Stainless steel insert bearing
- ◆ Solid foot housing design
- ◆ Relubricatable unit with anti-rotation pin
- ◆ Standard seal : SR type seal or single lip seal
- ◆ Triple lip seal is available upon request
- ◆ Supplied with food grade grease FM222



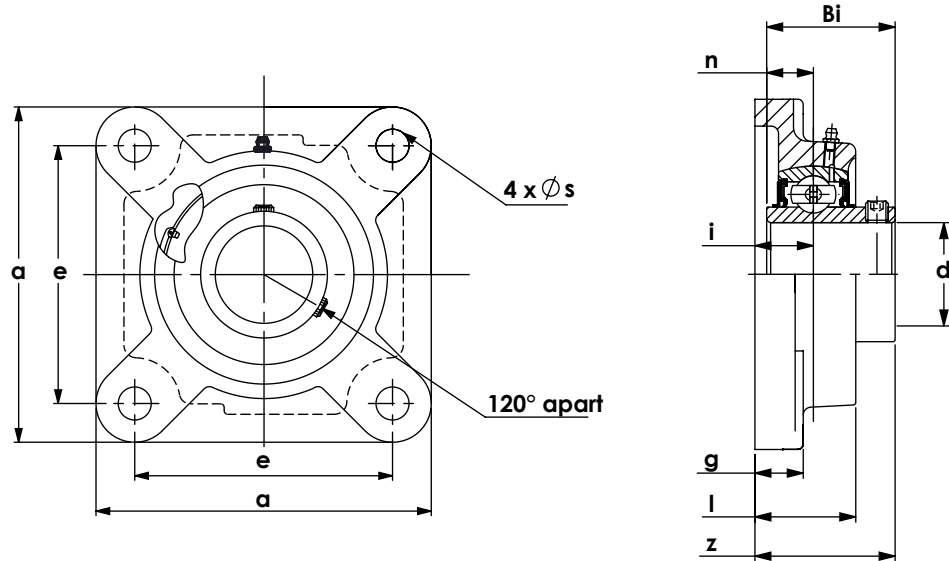
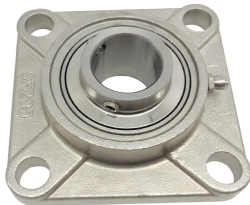
WJB Unit No.	Shaft Dia.		Dimensions									Bolt Size	Bearing No.	Housing No.	Weight
	d		a	e	i	g	l	s	z	Bi	n				
	in.	mm	mm in.	mm in.	mm in.	mm in.	mm in.	mm in.	mm in.	mm in.	mm in.				in.
SUCSF 201-8	1/2		86	64	15	11	25.4	11	33.3	31	12.7	3/8	SUC 201-8	SF204	0.82
202-10	5/8		3.386	2.520	0.591	0.433	1.000	0.472	1.311	1.220	0.500		202-10		
SUCSF 204-12	3/4		86	64	15	11	25.5	11	33.3	31	12.7	3/8	SUC 204-12	SF204	0.73
204		20	3.386	2.520	0.591	0.472	1.004	0.472	1.311	1.220	0.500		204		
SUCSF 205-14	7/8											3/8	SUC 205-14	SF205	0.95
205-15	15/16		95	70	16	13	27	11.5	35.7	34	14.3		205-15		
205-16	1		3.740	2.756	0.630	0.512	1.063	0.453	1.406	1.339	0.563		205-16		
205		25											205		
SUCSF 206-18	1 1/8											7/16	SUC 206-18	SF206	1.31
206-19	1 3/16		108	83	18	13	31	13	40.2	38.1	15.9		206-19		
206-20	1 1/4		4.252	3.268	0.709	0.512	1.220	0.512	1.583	1.500	0.626		206-20		
206		30											206		
SUCSF 207-20	1 1/4											7/16	SUC 207-20	SF207	1.72
207-21	1 5/16		117	92	19	15	34	13	44.4	42.9	17.5		207-21		
207-22	1 3/8		4.606	3.622	0.748	0.591	1.339	0.512	1.748	1.689	0.689		207-22		
207-23	1 7/16												207-23		
207		35											207		

All Stainless Steel Flange Units

SUCSF200 Series, 4-Bolts, Set Screw Type



- ◆ Stainless steel standard duty housing (AISI 304 or equivalent)
- ◆ Stainless steel insert bearing
- ◆ Solid foot housing design
- ◆ Relubricatable unit with anti-rotation pin
- ◆ Standard seal : SR type seal or single lip seal
- ◆ Triple lip seal is available upon request
- ◆ Supplied with food grade grease FM222



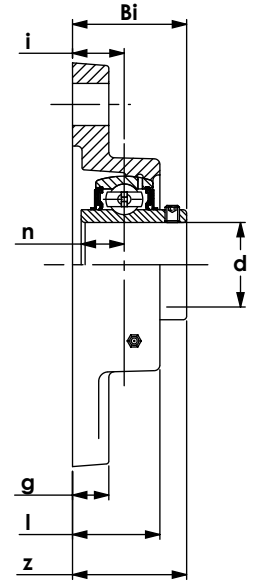
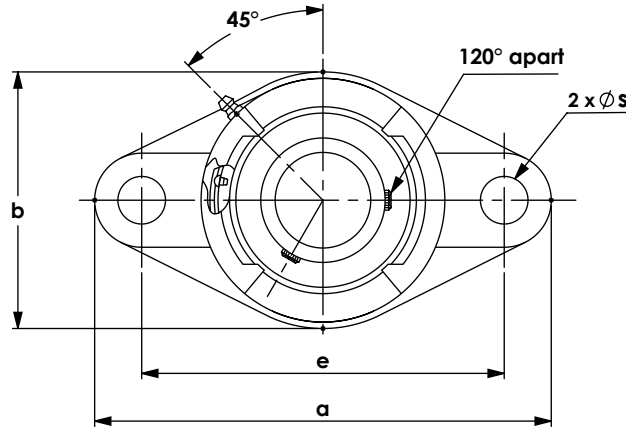
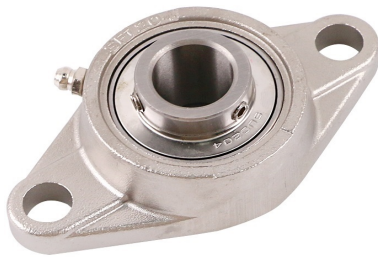
WJB Unit No.	Shaft Dia.		Dimensions									Bolt Size	Bearing No.	Housing No.	Weight
	d		a	e	i	g	l	s	z	B _i	n				
	in.	mm	mm in.	mm in.	mm in.	mm in.	mm in.	mm in.	mm in.	mm in.	mm in.				
SUCSF 208-24 208	1 1/2	40	130 5.118	102 4.016	21 0.827	15 0.591	36 1.417	14 0.551	51.2 2.016	49.2 1.937	19 0.748	1/2	SUC 208-24 208	SF208	2.22
SUCSF 209-26 209-27 209-28 209	1 5/8 1 11/16 1 3/4	45	137 5.394	105 4.134	22 0.866	16 0.630	38 1.496	16 0.630	52.2 2.055	49.2 1.937	19 0.748	9/16	SUC 209-26 209-27 209-28 209	SF209	2.45
SUCSF 210-30 210-31 210-32 210	1 7/8 1 15/16 2	50	143 5.630	111 4.370	22 0.866	16 0.630	40 1.575	16 0.630	54.6 2.150	51.6 2.031	19 0.748	9/16	SUC 210-30 210-31 210-32 210	SF210	2.68
SUCSF 211-32 211-35	2 2 3/16		162 6.378	130 5.118	25 0.984	18 0.709	43 1.693	17 0.669	58.4 2.299	55.6 2.189	22.2 0.874	5/8	SUC 211-32 211-35	SF211	3.67
SUCSF 212-36 212-39	2 1/4 2 7/16		175 6.890	143 5.630	29 1.142	18 0.709	48 1.890	17 0.669	68.7 2.705	65.1 2.563	25.4 1.000	5/8	SUC 212-36 212-39	SF212	4.54

All Stainless Steel Flange Units (Oval)

SUCSFT200 Series, 2-Bolts, Set Screw Type



- ◆ Stainless steel standard duty housing (AISI 304 or equivalent)
- ◆ Stainless steel insert bearing
- ◆ Solid foot housing design
- ◆ Relubricatable unit with anti-rotation pin
- ◆ Standard seal : SR type seal or single lip seal
- ◆ Triple lip seal is available upon request
- ◆ Supplied with food grade grease FM222



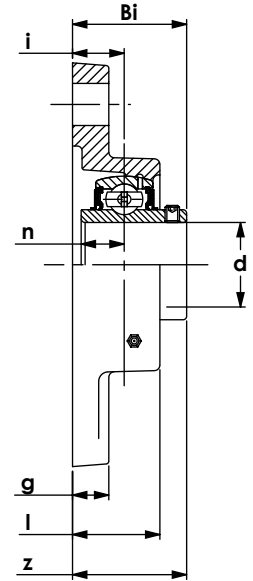
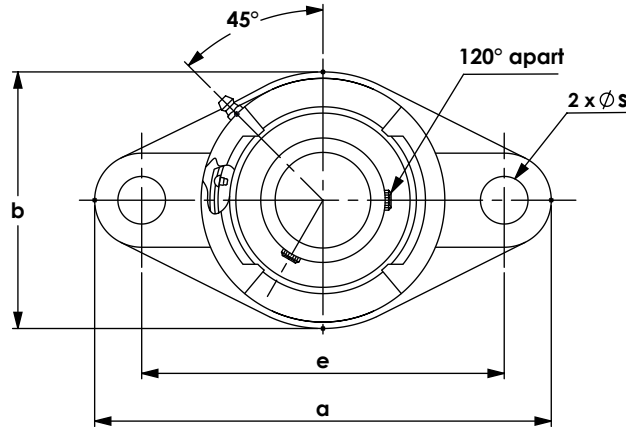
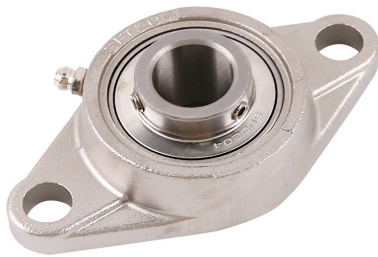
WJB Unit No.	Shaft Dia.		Dimensions										Bolt Size	Bearing No.	Housing No.	Weight
	d		a	e	i	g	l	s	b	z	Bi	n				
	in.	mm	mm	mm	mm	mm	mm	mm	mm	mm	mm	mm				mm
SUCSFT 201 201-8	1/2	12	113	90	15	12	25.5	10	60	32.6	31	12.7	5/16	SUC 201 201-8	SFT204	0.58
SUCSFT 202-10 202	5/8	15	113.0	90.0	15.0	12.0	25.5	10.0	60.0	32.6	31.0	12.7	5/16	SUC 202-10 202	SFT204	0.58
SUCSFT 203-11 203	11/16	17	113	90	15	12	25.5	10	60	32.6	31	12.7	5/16	SUC 203-11 203	SFT204	0.58
SUCSFT 204-12 204	3/4	20	113	90	15	12	25.5	10	60	32.6	31	12.7	5/16	SUC 204-12 204	SFT204	0.58
SUCSFT 205-14 205-15 205-16 205	7/8 15/16 1 25	25	125	99	16	13.5	27	12	68	35.6	34.1	14.3	3/8	SUC 205-14 205-15 205-16 205	SFT205	0.83
SUCSFT 206-17 206-18 206-19 206-20 206	1 1/16 1 1/8 1 3/16 1 1/4 30	30	141	117	18	13.5	31	12	79	40.1	38.1	15.9	3/8	SUC 206-17 206-18 206-19 206-20 206	SFT206	1.05

All Stainless Steel Flange Units (Oval)



SUCSFT200 Series, 2-Bolts, Set Screw Type

- ◆ Stainless steel standard duty housing (AISI 304 or equivalent)
- ◆ Stainless steel insert bearing
- ◆ Solid foot housing design
- ◆ Relubricatable unit with anti-rotation pin
- ◆ Standard seal : SR type seal or single lip seal
- ◆ Triple lip seal is available upon request
- ◆ Supplied with food grade grease FM222



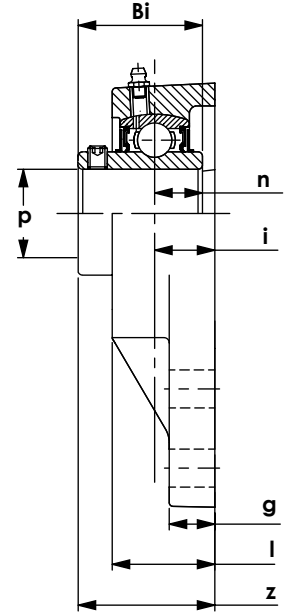
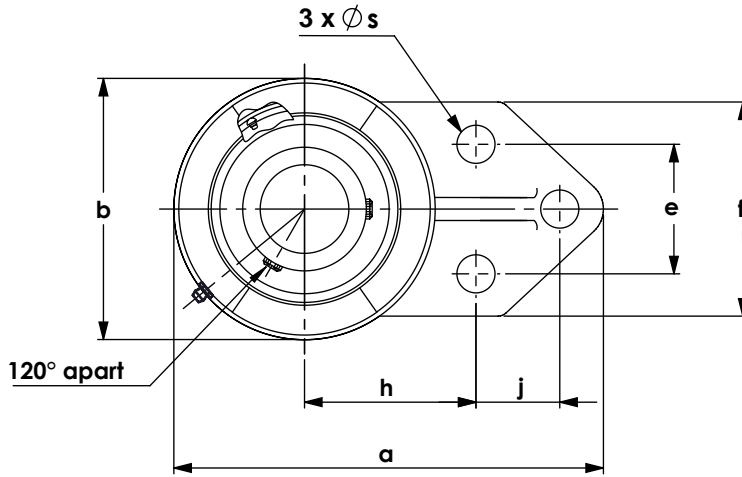
WJB Unit No.	Shaft Dia.		Dimensions										Bolt Size	Bearing No.	Housing No.	Weight	
	d		a	e	i	g	l	s	b	z	Bi	n					
	in.	mm	mm	mm	mm	mm	mm	mm	mm	mm	mm	mm				in.	kg
SUCSFT 207-20	1 1/4													7/16	SUC 207-20	SFT207	1.57
207-21	1 5/16		156	130	19	15.5	34	13	89	44.5	42.9	17.5					
207-22	1 3/8		6.142	5.118	0.748	0.610	1.339	0.512	3.504	1.752	1.689	0.689					
207-23	1 7/16																
207		35															
SUCSFT 208-24	1 1/2		172	144	21	15	36	13	99	51.2	49.2	19	7/16	SUC 208-24	SFT208	1.97	
208		40	6.772	5.669	0.827	0.591	1.417	0.512	3.898	2.016	1.937	0.748					
SUCSFT 209-26	1 5/8												1/2	SUC 209-26	SFT209	2.32	
209-27	1 11/16		179	148	22	14.3	38	15	107	52	49.2	19					
209-28	1 3/4		7.047	5.827	0.866	0.563	1.496	0.591	4.213	2.047	1.937	0.748					
209		45															
SUCSFT 210-30	1 7/8												1/2	SUC 210-30	SFT210	2.7	
210-31	1 15/16		189	157	22	15.5	38.5	15	114	54.8	51.6	19					
210-32	2		7.441	6.181	0.866	0.610	1.516	0.591	4.488	2.157	2.031	0.748					
210		50															
SUCSFT 211-32	2												5/8	SUC 211-32	SFT211	4.06	
211-34	2 1/8		217	184	25	19	44	18	133	58.8	55.6	22.2					
211-35	2 3/16		8.543	7.244	0.984	0.748	1.732	0.709	5.236	2.315	2.189	0.874					
211		55															

All Stainless Steel Flange Bracket Units



SUCSFB200 Series, 3-Bolts, Set Screw Type

- ◆ Stainless steel standard duty housing (AISI 304 or equivalent)
- ◆ Stainless steel insert bearing
- ◆ Solid foot housing design
- ◆ Relubricatable unit with anti rotation pin
- ◆ Standard seal : SR type seal or single lip seal
- ◆ Triple lip seal is available upon request
- ◆ Supplied with food grade grease FM222



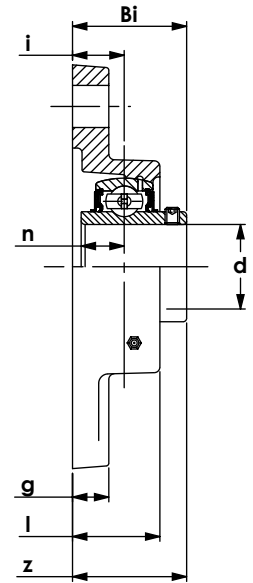
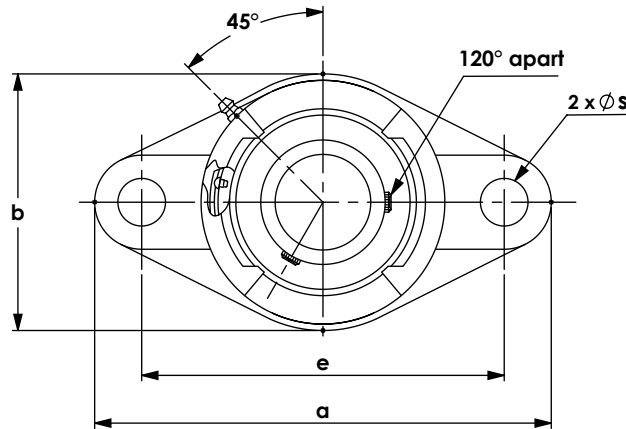
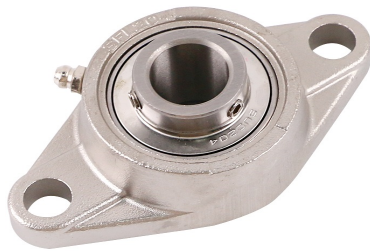
WJB Unit No.	Shaft Dia.		Dimensions													Bolt Size	Bearing No.	Housing No.	Weight	
	d		a	h	e	j	i	g	l	s	b	f	z	Bi	n					in.
	in.	mm	mm	mm	mm	mm	mm	mm	mm	mm	mm	mm	mm	mm	mm					
SUCSFB 201-8 202-10	1/2 5/8		108 4.252	43.3 1.705	38.1 1.500	22.2 0.874	16 0.630	8 0.315	25 0.984	9.9 0.390	64 2.520	60 2.362	34.3 1.350	31 1.220	12.7 0.500	5/16	SUC 201 201-8	SFB204	0.64	
SUCSFB 204-12 204	3/4 20		108 4.252	43.3 1.705	38.1 1.500	22.2 0.874	16 0.630	8 0.315	25 0.984	9.9 0.390	64 2.520	60 2.362	34.3 1.350	31 1.220	12.7 0.500	5/16	SUC 204-12 204	SFB204	0.59	
SUCSFB 205-14 205-15 205-16 205	7/8 15/16 1 25		121 4.764	46 1.811	41.3 1.626	28.6 1.126	16.5 0.650	9.5 0.374	29 1.142	9.9 0.390	70 2.756	64 2.520	36.2 1.425	34 1.339	14.3 0.563	5/16	SUC 205-14 205-15 205-16 205	SFB205	0.86	
SUCSFB 206-18 206-19 206-20 206	1 1/8 1 3/16 1 1/4 30		137 5.394	52.4 2.063	47.6 1.874	31.8 1.252	18 0.709	9.5 0.374	32 1.260	9.9 0.390	83 3.268	70 2.756	40.2 1.583	38.1 1.500	15.9 0.626	5/16	SUC 206-18 206-19 206-20 206	SFB206	1.09	
SUCSFB 207-20 207-21 207-22 207-23 207	1 1/4 1 5/16 1 3/8 1 7/16 35		156 6.142	60.3 2.374	50.8 2.000	31.7 1.248	21 0.827	12.7 0.500	36.5 1.437	13 0.512	95 3.740	83 3.268	46.4 1.827	42.9 1.689	17.5 0.689	3/8	SUC 207-20 207-21 207-22 207-23 207	SFB207	1.72	
SUCSFB 210-30 210-31 210-32 210	1 7/8 1 15/16 2 50		191 7.520	74.6 2.937	69.9 2.752	41.3 1.626	21 0.827	13 0.512	38 1.496	13.1 0.516	118 4.646	102 4.016	54.6 2.150	51.6 2.031	19.0 0.748	3/8	SUC 210-30 210-31 210-32 210	SFB210	2.72	

All Stainless Steel Flange Units (Oval)

SUCSFL200 Series, 2-Bolts, Set Screw Type



- ◆ Stainless steel standard duty housing (AISI 304 or equivalent)
- ◆ Stainless steel insert bearing
- ◆ Solid foot housing design
- ◆ Relubricatable unit with anti-rotation pin
- ◆ Standard seal : SR type seal or single lip seal
- ◆ Triple lip seal is available upon request
- ◆ Supplied with food grade grease FM222



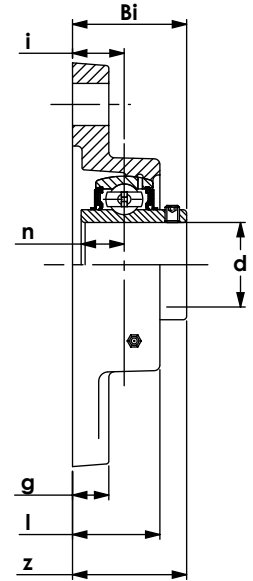
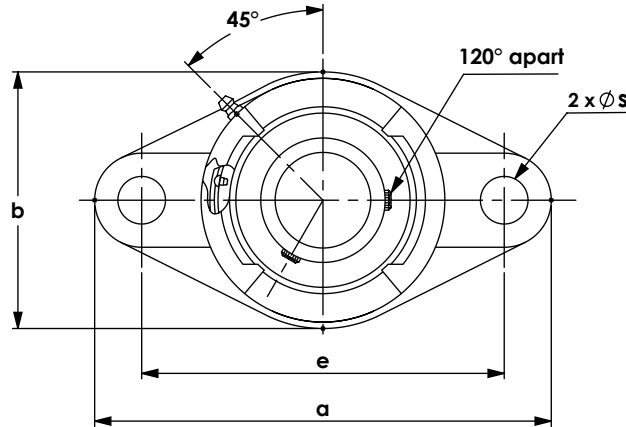
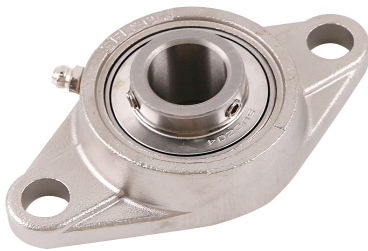
WJB Unit No.	Shaft Dia.		Dimensions										Bolt Size	Bearing No.	Housing No.	Weight									
	d		a	e	i	g	l	s	b	z	Bi	n					kg								
	in.	mm	mm	mm	mm	mm	mm	mm	mm	mm	mm	mm				mm	mm								
SUCSFL 201-8	1/2		99	76.2	15	11	27	10	60	33.3	31	12.7	5/16	SUC 201-8	SFL204	0.45									
202-10	5/8		3.898	3.000	0.591	0.433	1.063	0.472	2.362	1.311	1.220	0.500		202-10											
SUCSFL 204-8	1/2		114	89.7	15	11	25	10	60	33.3	31	12.7	5/16	SUC 204-8	SFL204	0.54									
204-10	5/8	204-10																							
204-12	3/4	4.488												3.531			0.591	0.433	0.984	0.394	2.362	1.311	1.220	0.500	204-12
204		20												204											
SUCSFL 205-14	7/8		124	98.8	16	13	27	11.9	68	35.7	34	14.3	3/8	SUC 205-14	SFL205	0.68									
205-15	15/16	205-15																							
205-16	1	4.882												3.890			0.630	0.512	1.063	0.469	2.677	1.406	1.339	0.563	205-16
205		25												205											
SUCSFL 206-18	1 1/8		141	116.7	18	13	31	11.9	80	40.5	38.1	15.9	7/16	SUC 206-18	SFL206	1.00									
206-19	1 3/16	206-19																							
206-20	1 1/4	5.551												4.594			0.709	0.512	1.220	0.469	3.150	1.594	1.500	0.626	206-20
206		30												206											
SUCSFL 207-20	1 1/4		161	130	19	16	34	16	90	44.4	42.9	17.5	1/2	SUC 207-20	SFL207	1.31									
207-21	1 5/16	207-21																							
207-22	1 3/8	6.339												5.118			0.748	0.630	1.339	0.630	3.543	1.748	1.689	0.689	207-22
207-23	1 7/16	207-23																							
207		35												207											

All Stainless Steel Flange Units (Oval)



SUCSFL200 Series, 2-Bolts, Set Screw Type

- ◆ Stainless steel standard duty housing (AISI 304 or equivalent)
- ◆ Stainless steel insert bearing
- ◆ Solid foot housing design
- ◆ Relubricatable unit with anti-rotation pin
- ◆ Standard seal : SR type seal or single lip seal
- ◆ Triple lip seal is available upon request
- ◆ Supplied with food grade grease FM222



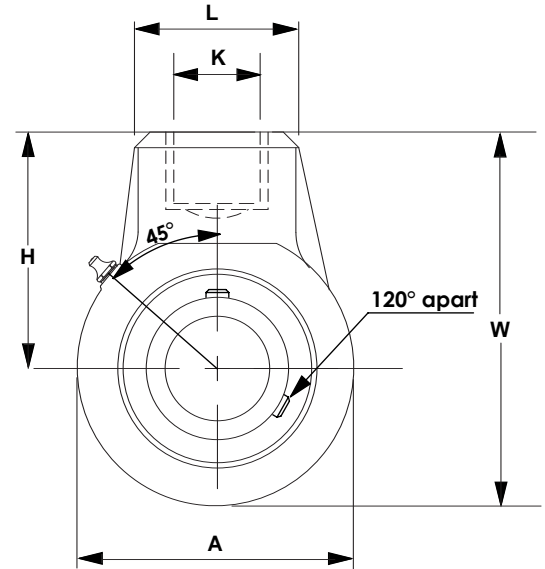
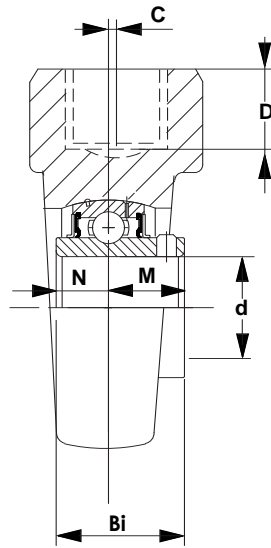
WJB Unit No.	Shaft Dia.		Dimensions										Bolt Size	Bearing No.	Housing No.	Weight
	d		a	e	i	g	l	s	b	z	Bi	n				
	in.	mm	mm	mm	mm	mm	mm	mm	mm	mm	mm	mm				
SUCSFL 208-24 208	1 1/2	40	171 6.732	143.7 5.657	21 0.827	14 0.551	36 1.417	13 0.512	100 3.937	50.8 2.000	49.2 1.937	19 0.748	7/16	SUC 208-24 208	SFL208	1.67
SUCSFL 209-26 209-27 209-28 209	1 5/8 1 11/16 1 3/4	45	179 7.047	148.4 5.843	22 0.866	15 0.591	38 1.496	15 0.591	108 4.252	52.4 2.063	49.2 1.937	19 0.748	1/2	SUC 209-26 209-27 209-28 209	SFL209	2.00
SUCSFL 210-30 210-31 210-32 210	1 7/8 1 15/16 2	50	189 7.441	157 6.181	22 0.866	15 0.591	40 1.575	15 0.591	115 4.528	54.8 2.157	51.6 2.031	19 0.748	1/2	SUC 210-30 210-31 210-32 210	SFL210	2.31

All Stainless Steel Hanger Units

SUCSHA200, Set Screw Type



- ◆ Stainless steel standard duty housing (AISI 304 or equivalent)
- ◆ Stainless steel insert bearing
- ◆ Relubricatable unit with anti-rotation pin
- ◆ Standard seal : SR type seal or single lip seal
- ◆ Triple lip seal is available upon request
- ◆ Supplied with food grade grease FM222



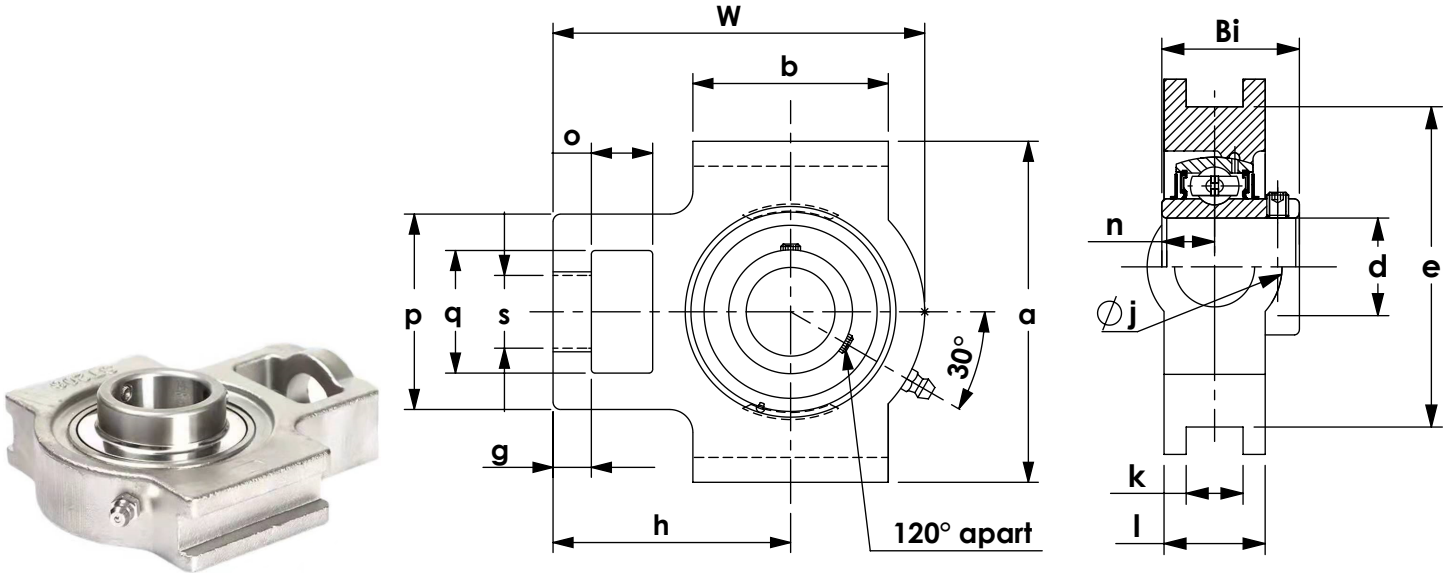
WJB Unit No.	Shaft Dia.		Dimensions										Bearing No.	Housing No.	Weight
	d		A	W	C	H	L	D	K	Bi	N	M			
	in.	mm	mm	mm	mm	mm	mm	mm	in.	mm	mm	mm			kg
SUCSHA 201	1/2	12	64	96	0	64	40	19.1	PF3/4-14	31	12.7	18.3	SUC 201	SHA204	0.7
201-8		2.520	3.780	2.520		1.575	0.752	1.220		0.500	0.720				
SUCSHA 202-10	5/8	15	64	96	0	64	40	19.1	PF3/4-14	31	12.7	18.3	SUC 202-10	SHA204	0.7
202		2.520	3.780	2.520		1.575	0.752	1.220		0.500	0.720				
SUCSHA 204-12	3/4	20	64	96	0	64	40	19.1	PF3/4-14	31	12.7	18.3	SUC 204-12	SHA204	0.7
204		2.520	3.780	2.520		1.575	0.752	1.220		0.500	0.720				
SUCSHA 205-14	7/8	25	70	99	0	64	40	19.1	PF3/4-14	34	14.3	19.7	SUC 205-14	SHA205	0.73
205-15		15/16	2.756	3.898		2.520	1.575	0.752		1.339	0.563	0.776			
205-16		1	2.756	3.898		2.520	1.575	0.752		1.339	0.563	0.776			
205		25	2.756	3.898		2.520	1.575	0.752		1.339	0.563	0.776			
SUCSHA 206-18	1 1/8	30	80	104	0	64	40	19.1	PF3/4-14	38.1	15.9	22.2	SUC 206-18	SHA206	0.86
206-19		1 3/16	3.150	4.094		2.520	1.575	0.752		1.500	0.626	0.874			
206-20		1 1/4	3.150	4.094		2.520	1.575	0.752		1.500	0.626	0.874			
206		30	3.150	4.094		2.520	1.575	0.752		1.500	0.626	0.874			
SUCSHA 207-20	1 1/4	35	92	116	0	70	40	19.1	PF3/4-14	42.9	17.5	25.4	SUC 207-20	SHA207	1.17
207-21		1 5/16	3.622	4.567		2.756	1.575	0.752		1.689	0.689	1.000			
207-22		1 3/8	3.622	4.567		2.756	1.575	0.752		1.689	0.689	1.000			
207-23		1 7/16	3.622	4.567		2.756	1.575	0.752		1.689	0.689	1.000			
207		35	3.622	4.567		2.756	1.575	0.752		1.689	0.689	1.000			

All Stainless Steel Take Up Units

SUCSST200 Series, Set Screw Type



- ◆ Stainless steel standard duty housing (AISI 304 or equivalent)
- ◆ Stainless steel insert bearing
- ◆ Relubricatable unit with anti-rotation pin
- ◆ Standard seal : SR type seal or single lip seal
- ◆ Triple lip seal is available upon request
- ◆ Supplied with food grade grease FM222



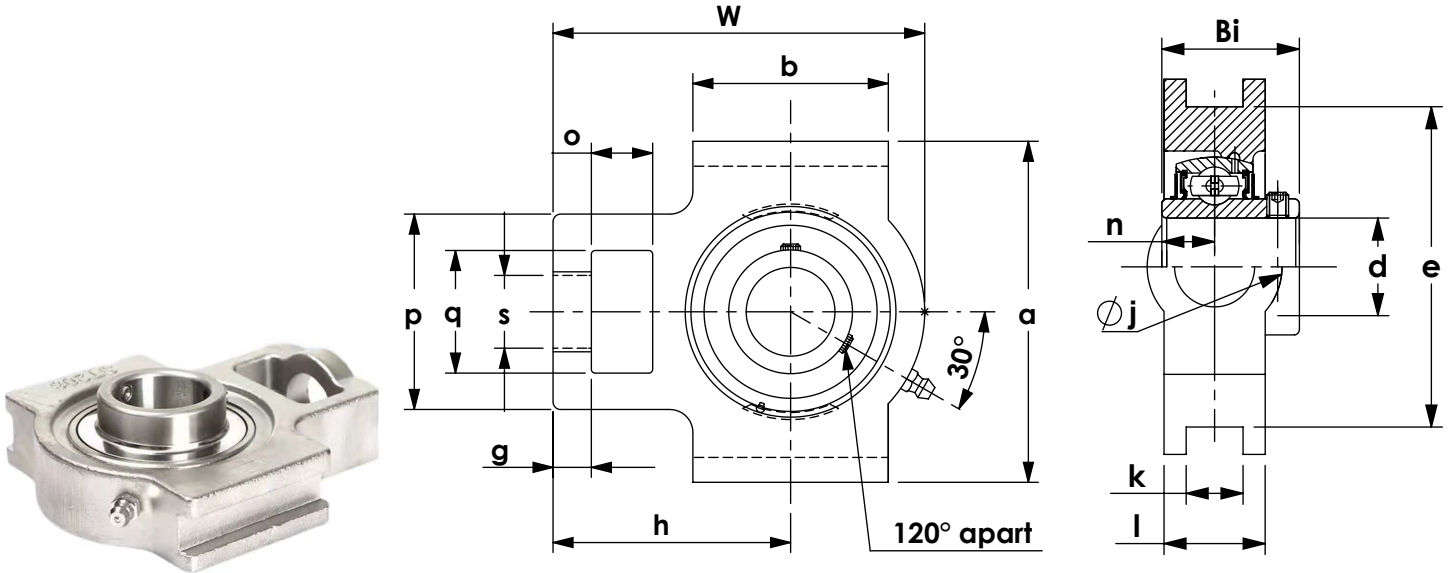
WJB Unit No.	Shaft Dia.		Dimensions														Bearing No.	Housing No.	Weight	
	d		o	g	p	q	s	b	k	e	a	W	j	l	h	Bi				n
	in.	mm	mm	mm	mm	mm	mm	mm	mm	mm	mm	mm	mm	mm	mm	mm			mm	mm
SUCSST 204-12 204	3/4		16	10	51	32	19	51	13.5	76.2	89	94	32	24	60	31	12.7	SUC 204-12 204	SST204	0.79
SUCSST 205-14 205-15 205-16 205	7/8 15/16 1 25		16	10	51	32	22	51	13.5	76.2	89	97	32	24	62	34.1	14.3	SUC 205-14 205-15 205-16 205	SST205	0.86
SUCSST 206-18 206-19 206-20 206	1 1/8 1 3/16 1 1/4 30		16	10	56	37	22	57	13.5	88.9	102	113	37	24	70	38.1	15.9	SUC 206-18 206-19 206-20 206	SST206	1.32
SUCSST 207-20 207-21 207-22 207-23 207	1 1/4 1 5/16 1 3/8 1 7/16 35		16	13	64	37	22	64	13.5	88.9	102	129	37	30	78	42.9	17.5	SUC 207-20 207-21 207-22 207-23 207	SST207	1.68
SUCSST 208-24 208-25 208	1 1/2 1 9/16 40		19	16	83	49	29	83	17.5	102	114	144	49	35	89	49.2	19	SUC 208-24 208-25 208	SST208	2.50

All Stainless Steel Take Up Units

SUCSST200 Series, Set Screw Type



- ◆ Stainless steel standard duty housing (AISI 304 or equivalent)
- ◆ Stainless steel insert bearing
- ◆ Relubricatable unit with anti-rotation pin
- ◆ Standard seal : SR type seal or single lip seal
- ◆ Triple lip seal is available upon request
- ◆ Supplied with food grade grease FM222



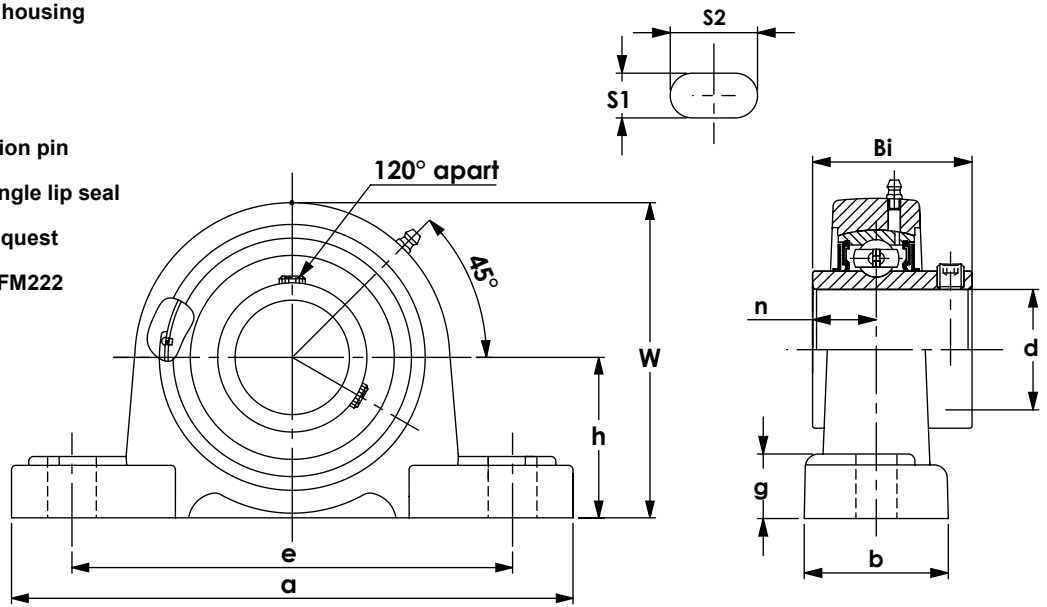
WJB Unit No.	Shaft Dia.		Dimensions														Bearing No.	Housing No.	Weight kg	
	d		o	g	p	q	s	b	k	e	a	W	j	l	h	Bi				n
	in.	mm	mm	mm	mm	mm	mm	mm	mm	mm	mm	mm	mm	mm	mm	mm				mm
SUCSST 209-26	1 5/8																	SUC 209-26	SST209	2.50
209-27	1 11/16		19	16	83	49	29	83	17.5	102	117	144	49	35	87	49.2	19	209-27		
209-28	1 3/4		0.748	0.630	3.268	1.929	1.142	3.268	0.689	4.016	4.606	5.669	1.929	1.378	3.425	1.937	0.748	209-28		
209		45																209		
SUCSST 210-30	1 7/8																	SUC 210-30	SST210	2.59
210-31	1 15/16		19	16	83	49	29	86	17.5	102	117	149	49	35	90	51.6	19	210-31		
210-32	2		0.748	0.630	3.268	1.929	1.142	3.386	0.689	4.016	4.606	5.866	1.929	1.378	3.543	2.031	0.748	210-32		
210		50																210		
SUCSST 211-32	2																	SUC 211-32	SST211	4.01
211-33	2 1/16		25	19	102	64	35	95	27	130	146	171	64	41	106	55.6	22.2	211-33		
211-34	2 1/8		0.984	0.748	4.016	2.520	1.378	3.740	1.063	5.118	5.748	6.732	2.520	1.614	4.173	2.189	0.874	211-34		
211-35	2 3/16																	211-35		
211		55																211		
SUCSST 212-36	2 1/4																	SUC 212-36	SST212	5.10
212-37	2 5/16		32	19	102	64	35	102	27	130	146	194	64	46	119	65.1	25.4	212-37		
212-38	2 3/8		1.260	0.748	4.016	2.520	1.378	4.016	1.063	5.118	5.748	7.638	2.520	1.811	4.685	2.563	1.000	212-38		
212-39	2 7/16																	212-39		
212		60																212		

Thermoplastic Pillow Blocks

SUCTP200 Series, High Center Height, Set Screw Locking



- ◆ PBT thermoplastic standard duty housing
- ◆ Stainless steel insert bearing
- ◆ Solid foot housing design
- ◆ Relubricatable unit with anti-rotation pin
- ◆ Standard seal : SR type seal or single lip seal
- ◆ Triple lip seal is available upon request
- ◆ Supplied with food grade grease FM222
- ◆ End caps available upon request



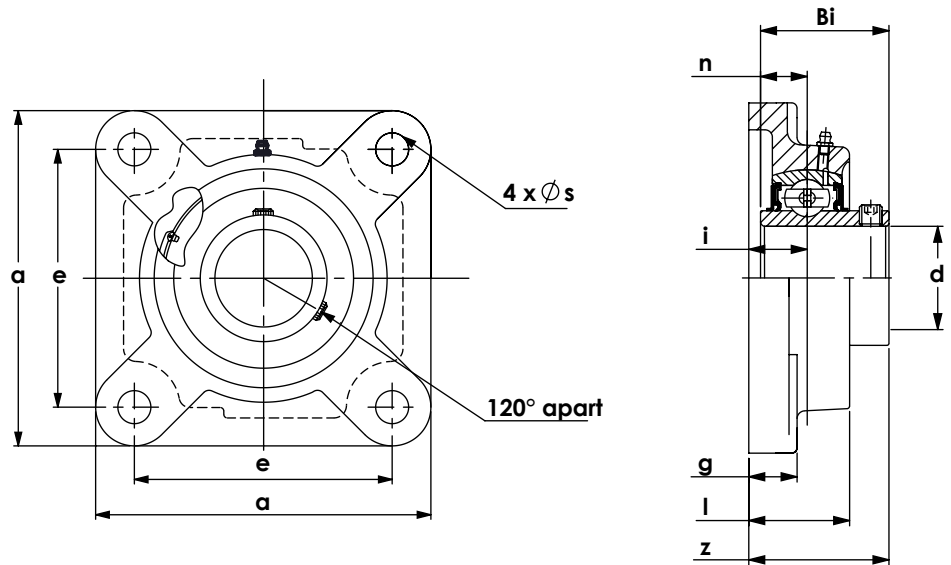
WJB Unit No.	Shaft Dia.		Dimensions										Bolt Size		Bearing No.	Housing No.	Weight kg
	d		h	a	e	b	S2	S1	g	W	Bi	n	in.	mm			
	in.	mm	mm	mm	mm	mm	mm	mm	mm	mm	mm	mm					
SUCTP 201		12	33.3	127	95	38	14	11	14	66	31	12.7	3/8	M10	SUC 201 201-8	TP204	0.36
201-8	1/2		1.311	5.000	3.740	1.496	0.551	0.433	0.551	2.598	1.220	0.500					
SUCTP 202		15	33.3	127	95	38	14	11	14	66	31	12.7	3/8	M10	SUC 202 202-10	TP204	0.36
202-10	5/8		1.311	5.000	3.740	1.496	0.551	0.433	0.551	2.598	1.220	0.500					
SUCTP 204-12		3/4	33.3	127	95	38	14	11	14	66	31	12.7	3/8	M10	SUC 204-12 204	TP204	0.36
204		20	1.311	5.000	3.740	1.496	0.551	0.433	0.551	2.598	1.220	0.500					
SUCTP 205-14		7/8											3/8	M10	SUC 205-14 205-15 205-16 205	TP205	0.36
205-15		15/16	36.5	140	105	38	14	11	14	71	34	14.3					
205-16		1	1.437	5.512	4.134	1.496	0.551	0.433	0.551	2.795	1.339	0.563					
205		25															
SUCTP 206-18		1 1/8											1/2	M14	SUC 206-18 206-19 206-20 206	TP206	0.54
206-19		1 3/16	42.9	163	119	48	18	14	18	84	38.1	15.9					
206-20		1 1/4	1.689	6.417	4.685	1.890	0.709	0.551	0.709	3.307	1.500	0.626					
206		30															
SUCTP 207-20		1 1/4											1/2	M14	SUC 207-20 207-21 207-22 207-23 207	TP207	0.77
207-21		1 5/16	47.6	168	127	48	18	14	18	94	42.9	17.5					
207-22		1 3/8	1.874	6.614	5.000	1.890	0.709	0.551	0.709	3.701	1.689	0.689					
207-23		1 7/16															
207		35															
SUCTP 208-24		1 1/2	49.2	184	137	54	18	14	20	99	49.2	19	1/2	M14	SUC 208-24 208	TP208	1.00
208		40	1.937	7.244	5.394	2.126	0.709	0.551	0.787	3.898	1.937	0.748					

Thermoplastic Flange Units

SUCTF200 Series, 4-Bolts, Set Screw Type



- ◆ PBT thermoplastic standard duty housing
- ◆ Stainless steel insert bearing
- ◆ Solid foot housing design
- ◆ Relubricatable unit with anti rotation pin
- ◆ Standard seal : SR type seal or single lip seal
- ◆ Triple lip seal is available upon request
- ◆ Supplied with food grade grease FM222
- ◆ End caps available upon request



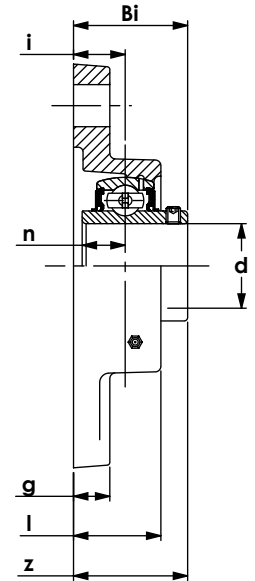
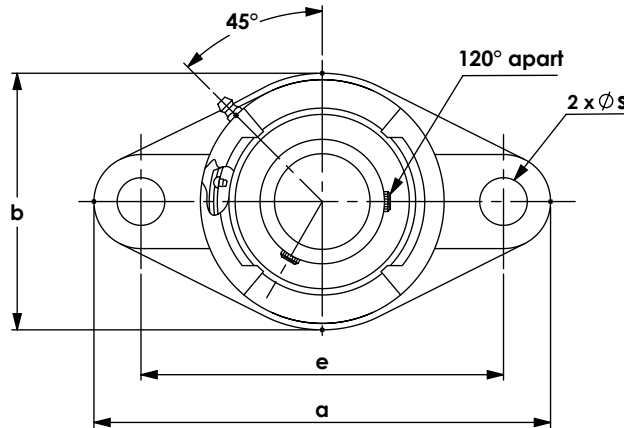
WJB Unit No.	Shaft Dia.		Dimensions									Bolt Size		Bearing No.	Housing No.	Weight kg
	d		a	e	i	g	l	s	z	Bi	n	in.	mm			
	in.	mm	mm	mm	mm	mm	mm	mm	mm	mm	mm					
SUCTF 201 201-8	1/2	12	86	64	18	13	28	11	36.5	31	12.7	3/8	M10	SUC 201 201-8	TF204	0.32
SUCTF 202-10 202	5/8	15	86	64	18	13	28	11	36.5	31	12.7	3/8	M10	SUC 202-10 202	TF204	0.32
SUCTF 204-12 204	3/4	20	86	64	18	13	28	11	36.5	31	12.7	3/8	M10	SUC 204-12 204	TF204	0.32
SUCTF 205-14 205-15 205-16 205	7/8 15/16 1 25	25	95 3.740	70 2.756	17 0.669	14 0.551	28 1.102	11 0.433	36.5 1.437	34 1.339	14.3 0.563	3/8	M10	SUC 205-14 205-15 205-16 205	TF205	0.36
SUCTF 206-18 206-19 206-20 206	1 1/8 1 3/16 1 1/4 30	30	108 4.252	83 3.268	19 0.748	14 0.551	32 1.260	11 0.433	41.3 1.626	38.1 1.500	15.9 0.626	3/8	M10	SUC 206-18 206-19 206-20 206	TF206	0.50
SUCTF 207-20 207-21 207-22 207-23 207	1 1/4 1 5/16 1 3/8 1 7/16 35	35	118 4.646	92 3.622	21 0.827	16 0.630	35 1.378	13 0.5118	44.4 1.843	42.9 1.689	17.5 0.689	7/16	M12	SUC 207-20 207-21 207-22 207-23 207	TF207	0.77
SUCTF 208-24 208	1 1/2 40	40	130 5.1181	102 4.0157	23 0.9055	17 0.6693	37 1.4567	14 0.5512	53.2 2.0945	49.2 1.937	19 0.748	1/2	M14	SUC 208-24 208	TF208	1.00

Thermoplastic Flange Units

SUCTFL200 Series, 2-Bolts, Set Screw Type



- ◆ PBT thermoplastic standard duty housing
- ◆ Stainless steel insert bearing
- ◆ Solid foot housing design
- ◆ Relubricatable unit with anti rotation pin
- ◆ Standard seal : SR type seal or single lip seal
- ◆ Triple lip seal is available upon request
- ◆ Supplied with food grade grease FM222
- ◆ End caps available upon request



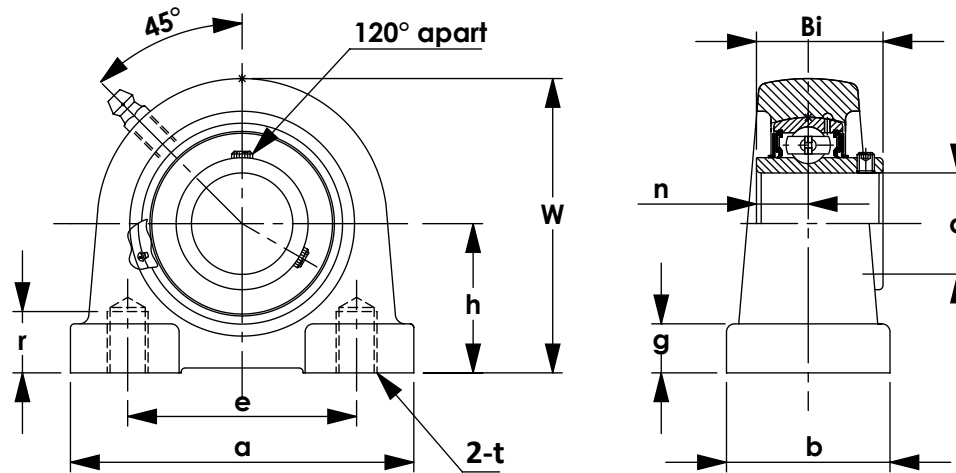
WJB Unit No.	Shaft Dia.		Dimensions										Bolt Size		Bearing No.	Housing No.	Weight kg	
	d		a	e	i	g	l	s	b	z	Bi	n						
	in.	mm	mm	mm	mm	mm	mm	mm	mm	mm	mm	mm	in.	mm				
SUCTFL 201-8	1/2															SUC 201-8		
202-10	5/8		113	89.7	15	11	26	11	64	33.7	31	12.7	3/8	M10	202-10	TFL204	0.27	
204-12	3/4		4.449	3.531	0.591	0.433	1.024	0.433	2.520	1.327	1.220	0.500			204-12			
204		20													204			
SUCTFL 205-14	7/8														SUC 205-14			
205-15	15/16		130	98.8	17	13	29	11	70	36.5	34	14.3	3/8	M10	205-15	TFL205	0.32	
205-16	1		5.118	3.890	0.669	0.512	1.142	0.433	2.756	1.437	1.339	0.563			205-16			
205		25													205			
SUCTFL 206-18	1 1/8														SUC 206-18			
206-19	1 3/16		148	116.7	19	13	31	11	80	40.9	38.1	15.9	3/8	M10	206-19	TFL206	0.50	
206-20	1 1/4		5.827	4.594	0.748	0.512	1.220	0.433	3.150	1.610	1.500	0.626			206-20			
206		30													206			
SUCTFL 207-20	1 1/4														SUC 207-20			
207-21	1 5/16		164	130.2	18	16	33	13	90	43.7	42.9	17.5	1/2	M14	207-21	TFL207	0.68	
207-22	1 3/8		6.457	5.126	0.709	0.630	1.299	0.512	3.543	1.720	1.689	0.689			207-22			
207-23	1 7/16														207-23			
207		35													207			
SUCTFL 208-24	1 1/2		175	143.7	21	20	37	14	100	52	49.2	19	1/2	M14	SUC 208-24			
208		40	6.890	5.657	0.827	0.787	1.457	0.551	3.937	2.047	1.937	0.748			208	TFL208	0.91	

Thermoplastic Tapped Base Unit

SUCSPA200 Series, Set Screw Locking



- ◆ PBT thermoplastic standard duty housing
- ◆ Stainless steel insert bearing
- ◆ Relubricatable unit with anti-rotation pin
- ◆ Standard seal : SR type seal or single lip seal
- ◆ Triple lip seal is available upon request
- ◆ Supplied with food grade grease FM222
- ◆ End caps available upon request



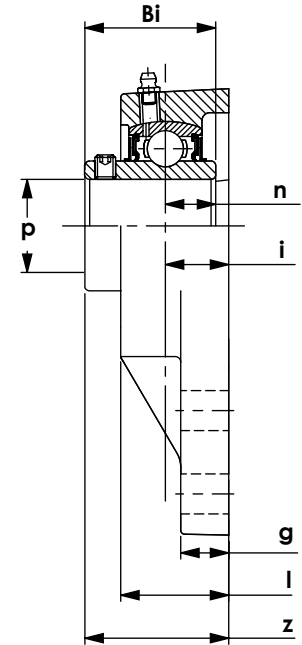
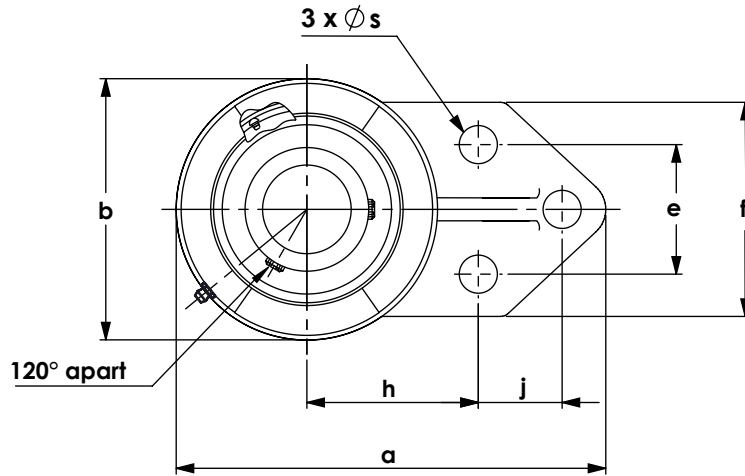
WJB Unit No.	Shaft Dia.		Dimensions									Bearing No.	Housing No.	Weight
	d		h	a	e	b	W	t	r	n	Bi			kg
	in.	mm	mm	mm	mm	mm	mm	mm	mm	mm	mm			
SUCTPA 201-8	1/2											SUC 201-8		0.27
202-10	5/8		33.3	73	50.8	35	66	3/8-16	13	12.7	31	202-10	TPA204	
204-12	3/4		1.311	2.874	2.000	1.378	2.598	UNC	0.512	0.500	1.220	204-12		
204		20										204		
SUCTPA 205-14	7/8											SUC 205-14		
205-15	15/16		36.5	76	50.8	40	74	3/8-16	13	14.3	34	205-15	TPA205	
205-16	1		1.437	2.992	2.000	1.575	2.913	UNC	0.512	0.563	1.339	205-16		
205		25										205		
SUCTPA 206-18	1 1/8											SUC 206-18		
206-19	1 3/16		42.9	102	76.2	43	84	7/16-14	13	22.2	38.1	206-19	TPA206	
206-20	1 1/4		1.689	4.016	3.000	1.693	3.307	UNC	0.512	0.874	1.500	206-20		
206		30										206		
SUCTPA 207-20	1 1/4											SUC 207-20		
207-21	1 5/16		47.6	110	82.6	48	95	1/2-13	16	25.4	42.9	207-21	TPA207	
207-22	1 3/8		1.874	4.331	3.252	1.890	3.740	UNC	0.630	1.000	1.689	207-22		
207		35										207		
SUCTPA 208-24	1 1/2		49.2	120	88.9	48	101	1/2-13	16	30.2	49.2	SUC 208-24		
208		40	1.937	4.724	3.500	1.890	3.976	UNC	0.630	1.189	1.937	208	TPA208	

Thermoplastic Flange Bracket Units

SUCTFB200 Series, 3-Bolts, Set Screw Type



- ◆ Stainless steel standard duty housing (AISI 304 or equivalent)
- ◆ Stainless steel insert bearing
- ◆ Relubricatable unit with anti-rotation pin
- ◆ Standard seal : SR type seal or single lip seal
- ◆ Triple lip seal is available upon request
- ◆ Supplied with food grade grease FM222
- ◆ Plastic caps available upon request



WJB Unit No.	Shaft Dia.		Dimensions													Bolt Size		Bearing No.	Housing No.	Weight kg	
	d		a	b	f	l	s	g	h	j	e	i	z	Bi	n	in.	mm				
	in.	mm	mm	mm	mm	mm	mm	mm	mm	mm	mm	mm	mm	mm	mm						
SUCTFB 201-8	1/2																		SUC 201-8		
202-10	5/8		108	64	62	26	9.9	11	43.3	22.2	38.1	15	33.3	31	12.7	5/16	M8	202-10	TFB204	0.34	
204-12	3/4		4.252	2.520	2.441	1.024	0.390	0.433	1.705	0.874	1.500	0.591	1.311	1.220	0.500			204-12			
204		20																204			
SUCTFB 205-14	7/8															5/16	M8	SUC 205-14			TFB205
205-15	15/16		121	70	64	34	9.9	11	46	28.6	41.3	16.5	37.1	34	14.3			205-15			
205-16	1		4.764	2.756	2.520	1.339	0.390	0.433	1.811	1.126	1.626	0.650	1.461	1.339	0.563			205-16			
205		25																205			
SUCTFB 206-18	1 1/8															5/16	M8	SUC 206-18	TFB206	0.65	
206-19	1 3/16		137	83	76	32	9.9	13	52.4	31.8	47.6	18	40.6	38.1	15.9			206-19			
206-20	1 1/4		5.394	3.268	2.992	1.260	0.390	0.512	2.063	1.252	1.874	0.709	1.598	1.500	0.626			206-20			
206		30																206			
SUCTFB 207-20	1 1/4															7/16	M12	SUC 207-20	TFB207	0.92	
207-21	1 5/16		156	95	89	37	13.1	16	60.3	31.8	50.8	19	45	42.9	17.5			207-21			
207-22	1 3/8		6.142	3.740	3.504	1.457	0.516	0.630	2.374	1.252	2.000	0.748	1.772	1.689	0.689			207-22			
207-23	1 7/16																	207-23			
207		35															207				