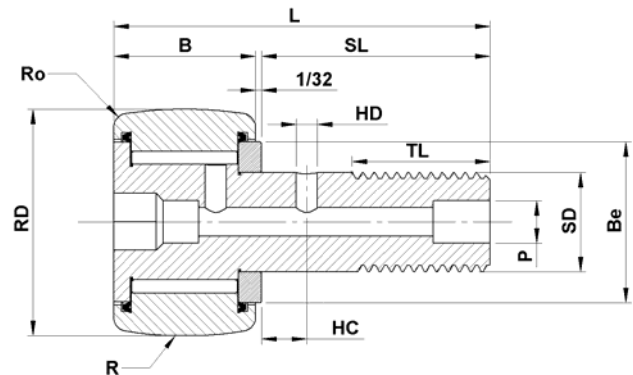


Inch Cam Follower (CF, CFE & CFH) Bearings



- Type:** Stud type Cylindrical / Crowned OD
- Rolling Elements:** Full complement needle roller
- Material:** Bearing quality steel
- Seal Type:** Disc
- Lubrication:** NLGI # 2 grease
- Configuration:** Concentric / Eccentric / Heavy stud
- Mounting Feature:** Slot / Hex Hole

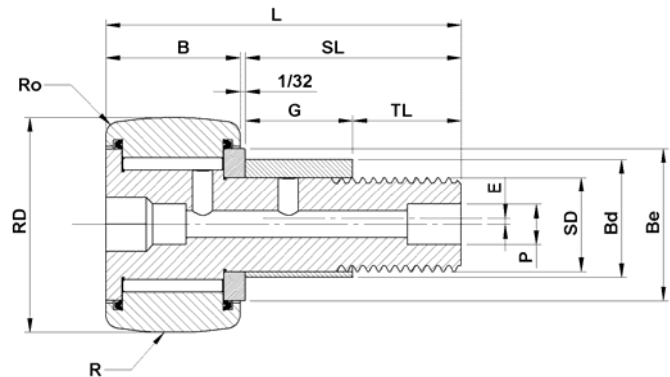


Part Number		RD	B	SD	SL	TL	Thread Class 2A	L	R	Load Rating	
Without Seals	With Seals	Roller Dia	Roller Width	Stud Dia	Stud Length	Min Thread Length		Overall Length	Crown Radius (CCF-xx)	Dyn	Static
		+0 -0.001	+0 -0.005	+0.001 -0	(Ref)	(Ref)		(Ref)	(Ref)	(lb)	(lb)
CF 016 CF 016 B CCF 016 CCF 016 B	CF 016 S CF 016 SB CCF 016 S CCF 016 SB	0.5	0.375	0.19	0.625	0.25	10-32	1.03	Cylindrical 7	680	790
CFE 016 CFE 016 B CCFE 016 CCFE 016 B	CFE 016 S CFE 016 SB CCFE 016 S CCFE 016 SB	0.5	0.375	0.19	0.625	0.25	10-32	1.03	Cylindrical 7	680	790
CFHS 016 CFHS 016 B CCFHS 016 CCFHS 016 B	CFHS 016 S CFHS 016 SB CCFHS 016 S CCFHS 016 SB	0.5	0.375	0.19	0.625	0.25	1/4-28	1.03	Cylindrical 7	680	1,580
CF 016 N CF 016 N B CCF 016 N CCF 016 N B	CF 016 N S CF 016 N SB CCF 016 N S CCF 016 N SB	0.5	0.344	0.19	0.500	0.25	10-32	0.88	Cylindrical 6	620	720
CFE 016 N CFE 016 N B CCFE 016 N CCFE 016 N B	CFE 016 N S CFE 016 N SB CCFE 016 N S CCFE 016 N SB	0.5	0.344	0.19	0.500	0.25	10-32	0.88	Cylindrical 6	620	720
CF 018 CF 018 B CCF 018 CCF 018 B	CF 018 S CF 018 SB CCF 018 S CCF 018 SB	0.5625	0.375	0.19	0.625	0.25	10-32	1.03	Cylindrical 7	680	790
CFE 018 CFE 018 B CCFE 018 CCFE 018 B	CFE 018 S CFE 018 SB CCFE 018 S CCFE 018 SB	0.5625	0.375	0.19	0.625	0.25	10-32	1.03	Cylindrical 7	680	790
CFHS 018 CFHS 018 B CCFHS 018 CCFHS 018 B	CFHS 018 S CFHS 018 SB CCFHS 018 S CCFHS 018 SB	0.5625	0.375	0.25	0.625	0.25	1/4-28	1.03	Cylindrical 7	680	1,580

Inch Cam Follower (CF, CFE & CFH) Bearings



- Type:** Stud type Cylindrical / Crowned OD
- Rolling Elements:** Full complement needle roller
- Material:** Bearing quality steel
- Seal Type:** Disc
- Lubrication:** NLGI # 2 grease
- Configuration:** Concentric / Eccentric / Heavy stud
- Mounting Feature:** Slot / Hex Hole

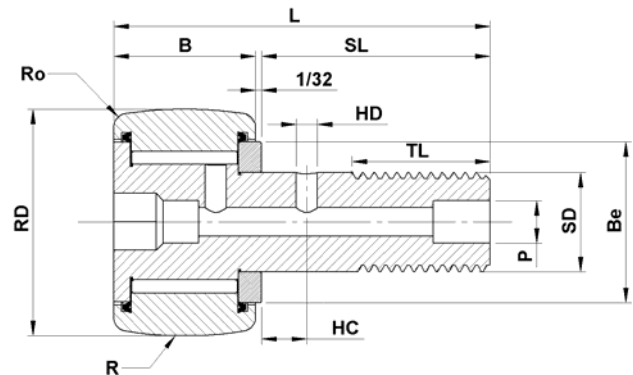


Basic Part Number With out Seals	E	G	BD	HSC	HSD	P	Be	Ro	HSBD		Clamping Force (lb)	Limiting Speed (RPM)	Weigh Ref (lb)
	Eccentric (CFE-xx)			Hole Center (Ref)	Hole Dia (in)	Axial Hole Dia or Fitting (Ref)	Min Boss Dia (Ref)	Outer Corner Radius (Ref)	Housing Bore Diameter				
	Ref	+0 -0.010	+0.001 -0.001	(Ref)	(in)	(Ref)	(Ref)	(Ref)	Nom.	Tol			
CF 016 CF 016 B CCF 016 CCF 016 B	N/A	N/A	N/A	-	-	0.125	0.41	0.016	0.1903	+0.0002 -0.0003	15	11,500	0.04
CFE 016 CFE 016 B CCFE 016 CCFE 016 B	0.01	0.375	0.250	-	-	0.125	0.41	0.016	0.253	+0.001 -0.001	15	11,500	0.04
CFHS 016 CFHS 016 B CCFHS 016 CCFHS 016 B	N/A	N/A	N/A	-	-	0.125	0.41	0.016	0.253	+0.0002 -0.0003	35	11,500	0.04
CF 016 N CF 016 N B CCF 016 N CCF 016 N B	N/A	N/A	N/A	-	-	0.125	0.41	0.016	0.1903	+0.0002 -0.0003	15	11,500	0.04
CFE 016 N CFE 016 N B CCFE 016 N CCFE 016 N B	0.01	0.375	0.250	-	-	0.125	0.41	0.016	0.253	+0.001 -0.001	15	11,500	0.04
CF 018 CF 018 B CCF 018 CCF 018 B	N/A	N/A	N/A	-	-	0.125	0.41	0.016	0.1903	+0.0002 -0.0003	15	10,000	0.04
CFE 018 CFE 018 B CCFE 018 CCFE 018 B	0.01	0.375	0.250	-	-	0.125	0.41	0.016	0.253	+0.001 -0.001	15	10,000	0.04
CFHS 018 CFHS 018 B CCFHS 018 CCFHS 018 B	N/A	N/A	N/A	-	-	0.125	0.41	0.016	0.253	+0.0002 -0.0003	35	10,000	0.04

Inch Cam Follower (CF, CFE & CFH) Bearings



- Type:** Stud type Cylindrical / Crowned OD
- Rolling Elements:** Full complement needle roller
- Material:** Bearing quality steel
- Seal Type:** Disc
- Lubrication:** NLGI # 2 grease
- Configuration:** Concentric / Eccentric / Heavy stud
- Mounting Feature:** Slot / Hex Hole

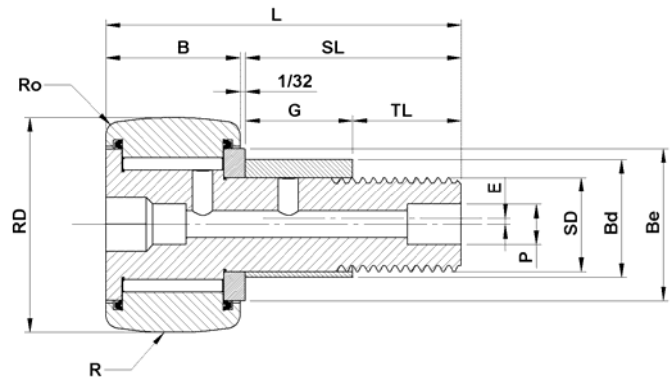


Part Number		RD	B	SD	SL	TL	Thread Class 2A	L	R	Load Rating	
Without Seals	With Seals	Roller Dia	Roller Width	Stud Dia	Stud Length	Min Thread Length		Overall Length	Crown Radius (CCF-xx)	Dyn	Static
		+0 -0.001	+0 -0.005	+0.001 -0	(Ref)	(Ref)		(Ref)	(Ref)	(lb)	(lb)
CF 020 CF 020 B CCF 020 CCF 020 B	CF 020 S CF 020 SB CCF 020 S CCF 020 SB	0.625	0.438	0.25	0.75	0.31	1/4-28	1.22	Cylindrical	955	1,215
	8										
CFE 020 CFE 020 B CCFE 020 CCFE 020 B	CFE 020 S CFE 020 SB CCFE 020 S CCFE 020 SB	0.625	0.438	0.25	0.75	0.31	1/4-28	1.22	Cylindrical	955	1,215
	8										
CFHS 020 CFHS 020 B CCFHS 020 CCFHS 020 B	CFHS 020 S CFHS 020 SB CCFHS 020 S CCFHS 020 SB	0.625	0.438	0.3125	0.75	0.31	5/16-24	1.22	Cylindrical	955	2,480
	8										
CF 020 N CF 020 N B CCF 020 N CCF 020 N B CCFE 020 N	CF 020 N S CF 020 N SB CCF 020 N S CCF 020 N SB	0.625	0.406	0.25	0.63	0.31	1/4-28	1.06	Cylindrical	930	1,085
	7										
CF 022 CF 022 B CCF 022 CCF 022 B	CF 022 S CF 022 SB CCF 022 S CCF 022 SB	0.688	0.438	0.25	0.75	0.31	1/4-28	1.22	Cylindrical	955	1,215
	8										
CFE 022 CFE 022 B CCFE 022 CCFE 022 B	CFE 022 S CFE 022 SB CCFE 022 S CCFE 022 SB	0.688	0.438	0.25	0.75	0.31	1/4-28	1.22	Cylindrical	955	1,215
	8										
CFHS 022 CFHS 022 B CCFHS 022 CCFHS 022 B	CFHS 022 S CFHS 022 SB CCFHS 022 S CCFHS 022 SB	0.688	0.438	0.3125	0.75	0.31	5/16-24	1.22	Cylindrical	955	2,480
	8										

Inch Cam Follower (CF, CFE & CFH) Bearings



- Type:** Stud type Cylindrical / Crowned OD
- Rolling Elements:** Full complement needle roller
- Material:** Bearing quality steel
- Seal Type:** Disc
- Lubrication:** NLGI # 2 grease
- Configuration:** Concentric / Eccentric / Heavy stud
- Mounting Feature:** Slot / Hex Hole

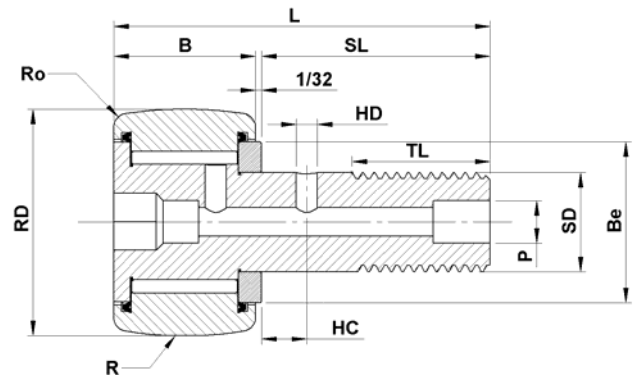


Basic Part Number With out Seals	E	G	BD	HSC	HSD	P	Be	Ro	HSBD		Clamping Force (lb)	Limiting Speed (RPM)	Weight Ref (lb)
	Eccentric (CFE-xx)			Hole Center	Hole Dia	Axial Hole Dia or Fitting	Min Boss Dia	Outer Corner Radius	Housing Bore Diameter				
	Ref	+0 -0.010	+0.001 -0.001	(Ref)	(in)	(Ref)	(Ref)	(Ref)	Nom.	Tol			
CF 020 CF 020 B CCF 020 CCF 020 B	N/A	N/A	N/A	-	-	0.125	0.462	0.016 N/A	0.2503	+0.0002 -0.0003	35	9,200	0.05
CFE 020 CFE 020 B CCFE 020 CCFE 020 B	0.01	0.375	0.250	-	-	0.125	0.462	0.016 N/A	0.378	+0.001 -0.001	35	9,200	0.05
CFHS 020 CFHS 020 B CCFHS 020 CCFHS 020 B	N/A	N/A	N/A	-	-	0.125	0.462	0.016 N/A	0.3128	+0.0002 -0.0003	90	9,200	0.05
CF 020 N CF 020 N B CCF 020 N CCF 020 N B CCFE 020 N	N/A 0.02	N/A 0.437	N/A 0.375	-	-	0.125	0.462	0.016 N/A	0.2503	+0.0002 -0.0003 +0.001	35	9,200	0.05
CF 022 CF 022 B CCF 022 CCF 022 B	N/A	N/A	N/A	-	-	0.125	0.462	0.016 N/A	0.2503	+0.0002 -0.0003	35	8,300	0.06
CFE 022 CFE 022 B CCFE 022 CCFE 022 B	0.02	0.437	0.375	-	-	0.125	0.462	0.016 N/A	0.378	+0.001 -0.001	35	8,300	0.06
CFHS 022 CFHS 022 B CCFHS 022 CCFHS 022 B	N/A	N/A	N/A	-	-	0.125	0.462	0.016 N/A	0.3128	+0.0002 -0.0003	90	8,300	0.06

Inch Cam Follower (CF, CFE & CFH) Bearings



- Type:** Stud type Cylindrical / Crowned OD
- Rolling Elements:** Full complement needle roller
- Material:** Bearing quality steel
- Seal Type:** Disc
- Lubrication:** NLGI # 2 grease
- Configuration:** Concentric / Eccentric / Heavy stud
- Mounting Feature:** Slot / Hex Hole

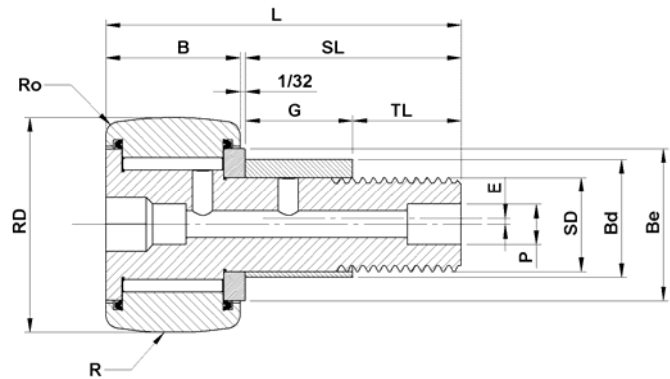


Part Number		RD	B	SD	SL	TL	Thread Class 2A	L	R	Load Rating								
Without Seals	With Seals	Roller Dia	Roller Width	Stud Dia	Stud Length	Min Thread Length		Overall Length	Crown Radius (CCF-xx)	Dyn	Static							
		+0 -0.001	+0 -0.005	+0.001 -0	(Ref)	(Ref)		(Ref)	(Ref)	(lb)	(lb)							
CF 024 CF 024 B CCF 024 CCF 024 B	CF 024 S CF 024 SB CCF 024 S CCF 024 SB	0.75	0.5	0.375	0.88	0.38	3/8-24	1.41	Cylindrical	1,660	2,065							
	10																	
CFE 024 CFE 024 B CCFE 024 CCFE 024 B	CFE 024 S CFE 024 SB CCFE 024 S CCFE 024 SB								0.75	0.5	0.375	0.88	0.38	3/8-24	1.41	1.41	1,660	2,065
	10																	
CFHS 024 CFHS 024 B CCFHS 024 CCFHS 024 B	CFHS 024 S CFHS 024 SB CCFHS 024 S CCFHS 024 SB	0.75	0.5	0.4375	0.88	0.38	7/16-20	1.41								Cylindrical	1,660	4,130
	10																	
CF 028 CF 028 B CCF 028 CCF 028 B	CF 028 S CF 028 SB CCF 028 S CCF 028 SB								0.875	0.5	0.375	0.88	0.38	3/8-24	1.41	Cylindrical	1,660	2,065
	10																	
CFE 028 CFE 028 B CCFE 028 CCFE 028 B	CFE 028 S CFE 028 SB CCFE 028 S CCFE 028 SB	0.875	0.5	0.375	0.88	0.38	3/8-24	1.41								Cylindrical	1,660	2,065
	10																	
CFHS 028 CFHS 028 B CCFHS 028 CCFHS 028 B	CFHS 028 S CFHS 028 SB CCFHS 028 S CCFHS 028 SB								0.875	0.5	0.4375	0.88	0.38	7/16-20	1.41	Cylindrical	1,660	4,130
	10																	

Inch Cam Follower (CF, CFE & CFH) Bearings



- Type:** Stud type Cylindrical / Crowned OD
- Rolling Elements:** Full complement needle roller
- Material:** Bearing quality steel
- Seal Type:** Disc
- Lubrication:** NLGI # 2 grease
- Configuration:** Concentric / Eccentric / Heavy stud
- Mounting Feature:** Slot / Hex Hole

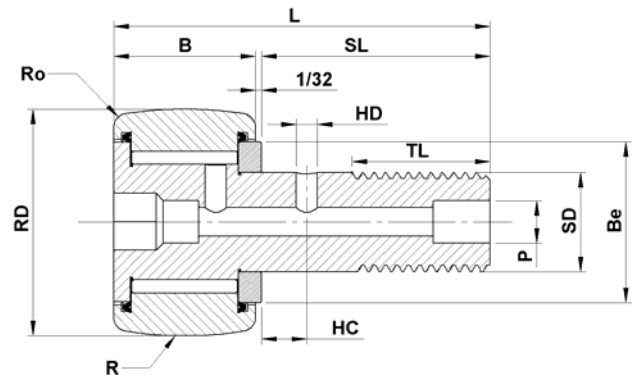


Basic Part Number With out Seals	E	G	BD	HSC	HSD	P	Be	Ro	HSBD		Clamping Force (lb)	Limiting Speed (RPM)	Weight Ref (lb)
	Eccentric (CFE-xx)			Hole Center (Ref)	Hole Dia (in)	Axial Hole Dia or Fitting (Ref)	Min Boss Dia (Ref)	Outer Corner Radius (Ref)	Housing Bore Diameter				
	Ref	+0 -0.010	+0.001 -0.001	(Ref)	(in)	(Ref)	(Ref)	(Ref)	Nom.	Tol			
CF 024 CF 024 B CCF 024 CCF 024 B	N/A	N/A	N/A	0.25	0.94	0.1875	0.609	0.016	0.3753	+0.0002 -0.0003	95	6,400	0.07
CFE 024 CFE 024 B CCFE 024 CCFE 024 B	0.015	0.5	0.500	0.25	0.94	0.1875	0.609	0.016	0.503	+0.001 -0.001	95	6,400	0.07
CFHS 024 CFHS 024 B CCFHS 024 CCFHS 024 B	N/A	N/A	N/A	0.25	0.94	0.1875	0.609	0.016	0.4378	+0.0002 -0.0003	250	6,400	0.08
CF 028 CF 028 B CCF 028 CCF 028 B	N/A	N/A	N/A	0.25	0.94	0.1875	0.609	0.016	0.3753	+0.0002 -0.0003	95	5,400	0.09
CFE 028 CFE 028 B CCFE 028 CCFE 028 B	0.015	0.5	0.500	0.25	0.94	0.1875	0.609	0.016	0.503	+0.001 -0.001	95	5,400	0.09
CFHS 028 CFHS 028 B CCFHS 028 CCFHS 028 B	N/A	N/A	N/A	0.25	0.94	0.1875	0.609	0.016	0.4378	+0.0002 -0.0003	250	5,400	0.11

Inch Cam Follower (CF, CFE & CFH) Bearings



Type: Stud type Cylindrical / Crowned OD
Rolling Elements: Full complement needle roller
Material: Bearing quality steel
Seal Type: Disc
Lubrication: NLGI # 2 grease
Configuration: Concentric / Eccentric / Heavy stud
Mounting Feature: Slot / Hex Hole

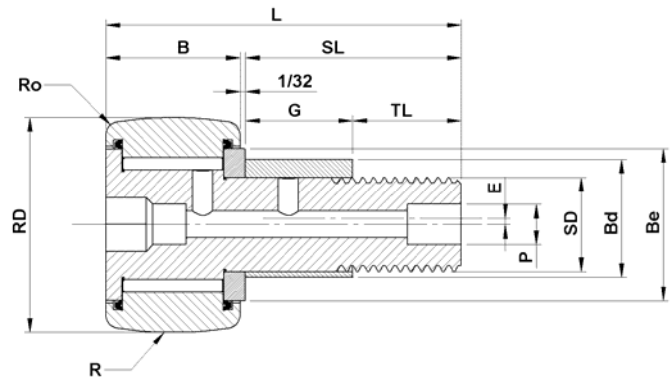


Part Number		RD	B	SD	SL	TL	Thread Class 2A	L	R	Load Rating	
Without Seals	With Seals	Roller Dia	Roller Width	Stud Dia	Stud Length	Min Thread Length		Overall Length	Crown Radius (CCF-xx)	Dyn	Static
		+0 -0.001	+0 -0.005	+0.001 -0	(Ref)	(Ref)		(Ref)	(Ref)	(lb)	(lb)
CF 032 CF 032 B CCF 032 CCF 032 B	CF 032 S CF 032 SB CCF 032 S CCF 032 SB	1	0.625	0.4375	1	0.5	7/16-20	1.66	Cylindrical 12	2,225	3,060
CFE 032 CFE 032 B CCFE 032 CCFE 032 B	CFE 032 S CFE 032 SB CCFE 032 S CCFE 032 SB	1	0.625	0.4375	1	0.5	7/16-20	1.66	Cylindrical 12	2,225	3,060
CFHS 032 CFHS 032 B CCFHS 032 CCFHS 032 B	CFHS 032 S CFHS 032 SB CCFHS 032 S CCFHS 032 SB	1	0.625	0.625	1	0.5	5/8-18	1.66	Cylindrical 12	2,225	6,120
CF 036 CF 036 B CCF 036 CCF 036 B	CF 036 S CF 036 SB CCF 036 S CCF 036 SB	1.125	0.625	0.4375	1	0.5	7/16-20	1.66	Cylindrical 12	2,225	3,060
CFE 036 CFE 036 B CCFE 036 CCFE 036 B	CFE 036 S CFE 036 SB CCFE 036 S CCFE 036 SB	1.125	0.625	0.4375	1	0.5	7/16-20	1.66	Cylindrical 12	2,225	3,060
CFHS 036 CFHS 036 B CCFHS 036 CCFHS 036 B	CFHS 036 S CFHS 036 SB CCFHS 036 S CCFHS 036 SB	1.125	0.625	0.625	1	0.5	5/8-18	1.66	Cylindrical 12	2,225	6,120

Inch Cam Follower (CF, CFE & CFH) Bearings



- Type:** Stud type Cylindrical / Crowned OD
- Rolling Elements:** Full complement needle roller
- Material:** Bearing quality steel
- Seal Type:** Disc
- Lubrication:** NLGI # 2 grease
- Configuration:** Concentric / Eccentric / Heavy stud
- Mounting Feature:** Slot / Hex Hole

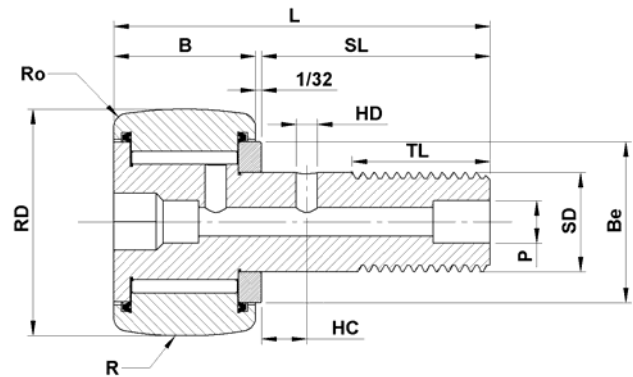


Basic Part Number With out Seals	E	G	BD	HSC	HSD	P	Be	Ro	HSBD		Clamping Force (lb)	Limiting Speed (RPM)	Weight Ref (lb)
	Eccentric (CFE-xx)			Hole Center (Ref)	Hole Dia (in)	Axial Hole Dia or Fitting (Ref)	Min Boss Dia (Ref)	Outer Corner Radius (Ref)	Housing Bore Diameter				
	Ref	+0 -0.010	+0.001 -0.001						Nom.	Tol			
CF 032 CF 032 B CCF 032 CCF 032 B	N/A	N/A	N/A	0.25	0.94	0.1875	0.781	0.031	0.4378	$\frac{+0.0002}{-0.0003}$	250	4,800	0.17
CFE 032 CFE 032 B CCFE 032 CCFE 032 B	0.030	0.5	0.625	0.25	0.94	0.1875	0.781	0.031	0.628	$\frac{+0.001}{-0.001}$	250	4,800	0.17
CFHS 032 CFHS 032 B CCFHS 032 CCFHS 032 B	N/A	N/A	N/A	0.25	0.94	0.1875	0.781	0.031	0.6253	$\frac{+0.0002}{-0.0003}$	650	4,800	0.2
CF 036 CF 036 B CCF 036 CCF 036 B	N/A	N/A	N/A	0.25	0.94	0.1875	0.781	0.031	0.4378	$\frac{+0.0002}{-0.0003}$	250	3,400	0.19
CFE 036 CFE 036 B CCFE 036 CCFE 036 B	0.030	0.5	0.625	0.25	0.94	0.1875	0.781	0.031	0.628	$\frac{+0.001}{-0.001}$	250	3,400	0.19
CFHS 036 CFHS 036 B CCFHS 036 CCFHS 036 B	N/A	N/A	N/A	0.25	0.94	0.1875	0.781	0.031	0.6253	$\frac{+0.0002}{-0.0003}$	650	3,400	0.24

Inch Cam Follower (CF, CFE & CFH) Bearings



- Type:** Stud type Cylindrical / Crowned OD
- Rolling Elements:** Full complement needle roller
- Material:** Bearing quality steel
- Seal Type:** Disc
- Lubrication:** NLGI # 2 grease
- Configuration:** Concentric / Eccentric / Heavy stud
- Mounting Feature:** Slot / Hex Hole

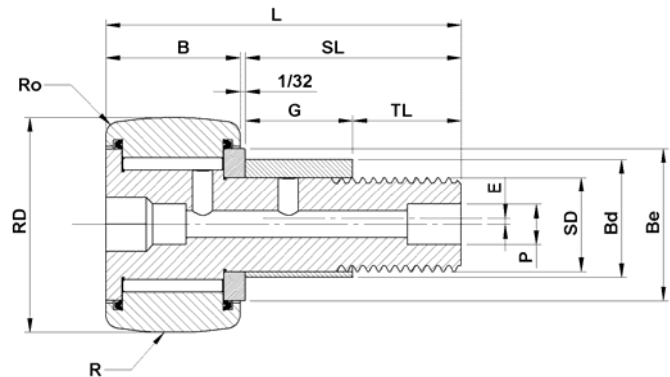


Part Number		RD	B	SD	SL	TL	Thread Class 2A	L	R	Load Rating	
Without Seals	With Seals	Roller Dia	Roller Width	Stud Dia	Stud Length	Min Thread Length		Overall Length	Crown Radius (CCF-xx)	Dyn	Static
		+0 -0.001	+0 -0.005	+0.001 -0	(Ref)	(Ref)		(Ref)	(Ref)	(lb)	(lb)
CF 040 CF 040 B CCF 040 CCF 040 B	CF 040 S CF 040 SB CCF 040 S CCF 040 SB	1.25	0.75	0.5	1.25	0.63	1/2-20	2.03	Cylindrical 14	3,930	4,250
CFE 040 CFE 040 B CCFE 040 CCFE 040 B	CFE 040 S CFE 040 SB CCFE 040 S CCFE 040 SB	1.25	0.75	0.5	1.25	0.63	1/2-20	2.03	Cylindrical 14	3,930	4,250
CFHS 040 CFHS 040 B CCFHS 040 CCFHS 040 B	CFHS 040 S CFHS 040 SB CCFHS 040 S CCFHS 040 SB	1.25	0.75	0.75	1.25	0.63	3/4-16	2.03	Cylindrical 14	3,930	8,500
CF 044 CF 044 B CCF 044 CCF 044 B	CF 044 S CF 044 SB CCF 044 S CCF 044 SB	1.375	0.75	0.5	1.25	0.63	1/2-20	2.03	Cylindrical 14	3,930	4,250
CFE 044 CFE 044 B CCFE 044 CCFE 044 B	CFE 044 S CFE 044 SB CCFE 044 S CCFE 044 SB	1.375	0.75	0.5	1.25	0.63	1/2-20	2.03	Cylindrical 14	3,930	4,250
CFHS 044 CFHS 044 B CCFHS 044 CCFHS 044 B	CFHS 044 S CFHS 044 SB CCFHS 044 S CCFHS 044 SB	1.375	0.75	0.75	1.25	0.63	3/4-16	2.03	Cylindrical 14	3,930	8,500

Inch Cam Follower (CF, CFE & CFH) Bearings



- Type:** Stud type Cylindrical / Crowned OD
- Rolling Elements:** Full complement needle roller
- Material:** Bearing quality steel
- Seal Type:** Disc
- Lubrication:** NLGI # 2 grease
- Configuration:** Concentric / Eccentric / Heavy stud
- Mounting Feature:** Slot / Hex Hole

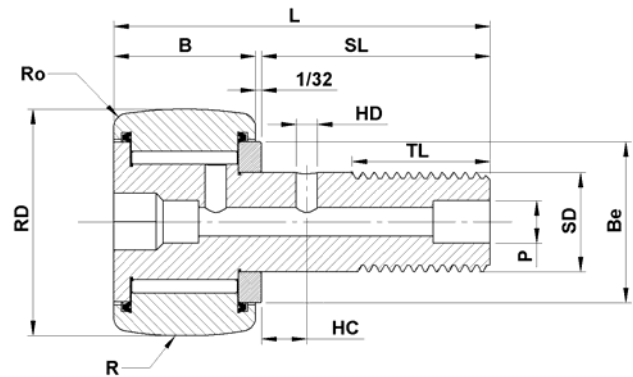


Basic Part Number With out Seals	E	G	BD	HSC	HSD	P	Be	Ro	HSBD		Clamping Force (lb)	Limiting Speed (RPM)	Weight Ref (lb)
	Eccentric (CFE-xx)			Hole Center (Ref)	Hole Dia (in)	Axial Hole Dia or Fitting (Ref)	Min Boss Dia (Ref)	Outer Corner Radius (Ref)	Housing Bore Diameter				
	Ref	+0 -0.010	+0.001 -0.001	(Ref)	(in)	(Ref)	(Ref)	(Ref)	Nom.	Tol			
CF 040 CF 040 B CCF 040 CCF 040 B	N/A	N/A	N/A	0.3125	0.09	0.1875	0.984	0.031 N/A	0.5003	$\frac{+0.0002}{-0.0003}$	350	3,100	0.3
CFE 040 CFE 040 B CCFE 040 CCFE 040 B	0.030	0.625	0.687	0.3125	0.09	0.1875	0.984	0.031 N/A	0.69	$\frac{+0.001}{-0.001}$	350	3,100	0.3
CFHS 040 CFHS 040 B CCFHS 040 CCFHS 040 B	N/A	N/A	N/A	0.3125	0.09	0.1875	0.984	0.031 N/A	0.7503	$\frac{+0.0002}{-0.0003}$	1,250	3,100	0.38
CF 044 CF 044 B CCF 044 CCF 044 B	N/A	N/A	N/A	0.3125	0.09	0.1875	0.984	0.047 N/A	0.5003	$\frac{+0.0002}{-0.0003}$	350	2,800	0.35
CFE 044 CFE 044 B CCFE 044 CCFE 044 B	0.030	0.625	0.687	0.3125	0.09	0.1875	0.984	0.047 N/A	0.69	$\frac{+0.001}{-0.001}$	350	2,800	0.035
CFHS 044 CFHS 044 B CCFHS 044 CCFHS 044 B	N/A	N/A	N/A	0.3125	0.09	0.1875	0.984	0.047 N/A	0.7503	$\frac{+0.0002}{-0.0003}$	1,250	2,800	0.44

Inch Cam Follower (CF, CFE & CFH) Bearings



- Type:** Stud type Cylindrical / Crowned OD
- Rolling Elements:** Full complement needle roller
- Material:** Bearing quality steel
- Seal Type:** Disc
- Lubrication:** NLGI # 2 grease
- Configuration:** Concentric / Eccentric / Heavy stud
- Mounting Feature:** Slot / Hex Hole

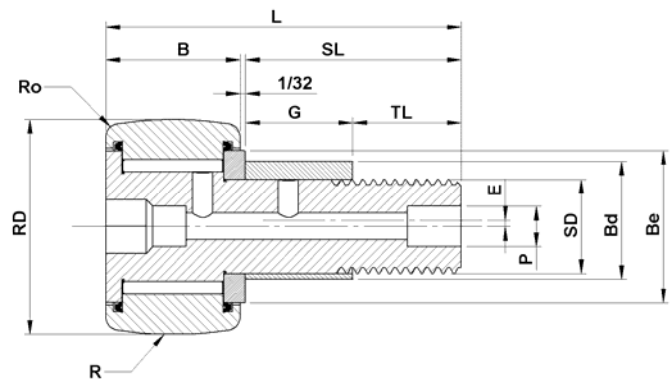


Part Number		RD	B	SD	SL	TL	Thread Class 2A	L	R	Load Rating	
Without Seals	With Seals	Roller Dia	Roller Width	Stud Dia	Stud Length	Min Thread Length		Overall Length	Crown Radius (CCF-xx)	Dyn	Static
		+0 -0.001	+0 -0.005	+0.001 -0	(Ref)	(Ref)		(Ref)	(Ref)	(lb)	(lb)
CF 048 CF 048 B CCF 048 CCF 048 B	CF 048 S CF 048 SB CCF 048 S CCF 048 SB	1.5	0.875	0.625	1.5	0.75	5/8-18	2.41	Cylindrical 20	4,840	5,640
CFE 048 CFE 048 B CCFE 048 CCFE 048 B	CFE 048 S CFE 048 SB CCFE 048 S CCFE 048 SB	1.5	0.875	0.625	1.5	0.75	5/8-18	2.41	Cylindrical 20	4,840	5,640
CFHS 048 CFHS 048 B CCFHS 048 CCFHS 048 B	CFHS 048 S CFHS 048 SB CCFHS 048 S CCFHS 048 SB	1.5	0.875	0.875	1.5	0.875	7/8-14	2.41	Cylindrical 20	4,840	11,280
CF 052 CF 052 B CCF 052 CCF 052 B	CF 052 S CF 052 SB CCF 052 S CCF 052 SB	1.625	0.875	0.625	1.5	0.75	5/8-18	2.41	Cylindrical 20	4,840	5,640
CFE 052 CFE 052 B CCFE 052 CCFE 052 B	CFE 052 S CFE 052 SB CCFE 052 S CCFE 052 SB	1.625	0.875	0.625	1.5	0.75	5/8-18	2.41	Cylindrical 20	4,840	5,640
CFHS 052 CFHS 052 B CCFHS 052 CCFHS 052 B	CFHS 052 S CFHS 052 SB CCFHS 052 S CCFHS 052 SB	1.625	0.875	0.875	1.5	0.875	7/8-14	2.41	Cylindrical 20	4,840	11,280

Inch Cam Follower (CF, CFE & CFH) Bearings



- Type:** Stud type Cylindrical / Crowned OD
- Rolling Elements:** Full complement needle roller
- Material:** Bearing quality steel
- Seal Type:** Disc
- Lubrication:** NLGI # 2 grease
- Configuration:** Concentric / Eccentric / Heavy stud
- Mounting Feature:** Slot / Hex Hole

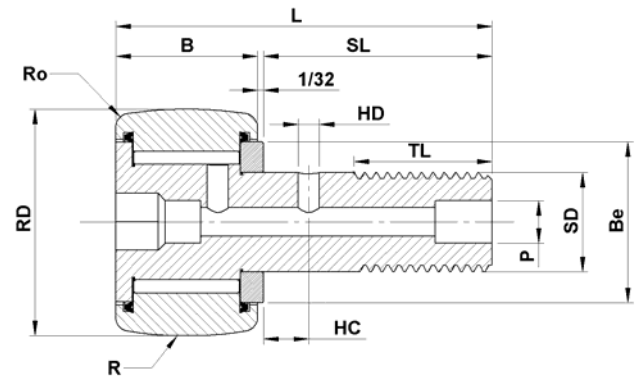


Basic Part Number With out Seals	E	G	BD	HSC	HSD	P	Be	Ro	HSBD		Clamping Force (lb)	Limiting Speed (RPM)	Weight Ref (lb)
	Eccentric (CFE-xx)			Hole Center (Ref)	Hole Dia (in)	Axial Hole Dia or Fitting (Ref)	Min Boss Dia (Ref)	Outer Corner Radius (Ref)	Housing Bore Diameter				
	Ref	+0 -0.010	+0.001 -0.001	(Ref)	(in)	(Ref)	(Ref)	(Ref)	Nom.	Tol			
CF 048 CF 048 B CCF 048 CCF 048 B	N/A	N/A	N/A	0.375	0.09	0.1875	1.094	0.063 N/A	0.6253	$\frac{+0.0002}{-0.0003}$	650	2,500	0.53
CFE 048 CFE 048 B CCFE 048 CCFE 048 B	0.030	0.75	0.875	0.375	0.09	0.1875	1.094	0.063 N/A	0.878	$\frac{+0.001}{-0.001}$	650	2,500	0.53
CFHS 048 CFHS 048 B CCFHS 048 CCFHS 048 B	N/A	N/A	N/A	0.375	0.09	0.1875	1.094	0.063 N/A	0.9753	$\frac{+0.0002}{-0.0003}$	1,500	2,500	0.69
CF 052 CF 052 B CCF 052 CCF 052 B	N/A	N/A	N/A	0.375	0.09	0.1875	1.094	0.063 N/A	0.6253	$\frac{+0.0002}{-0.0003}$	650	2,350	0.6
CFE 052 CFE 052 B CCFE 052 CCFE 052 B	0.030	0.75	0.875	0.375	0.09	0.1875	1.094	0.063 N/A	0.878	$\frac{+0.001}{-0.001}$	650	2,350	0.6
CFHS 052 CFHS 052 B CCFHS 052 CCFHS 052 B	N/A	N/A	N/A	0.375	0.09	0.1875	1.094	0.063 N/A	0.9753	$\frac{+0.0002}{-0.0003}$	1,500	2,350	0.75

Inch Cam Follower (CF, CFE & CFH) Bearings



- Type:** Stud type Cylindrical / Crowned OD
- Rolling Elements:** Full complement needle roller
- Material:** Bearing quality steel
- Seal Type:** Disc
- Lubrication:** NLGI # 2 grease
- Configuration:** Concentric / Eccentric / Heavy stud
- Mounting Feature:** Slot / Hex Hole

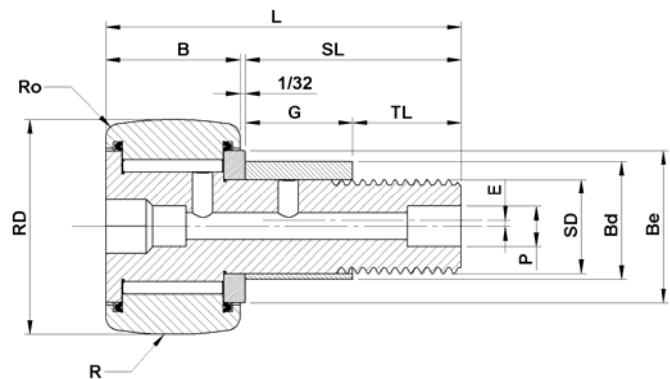


Part Number		RD	B	SD	SL	TL	Thread Class 2A	L	R	Load Rating	
Without Seals	With Seals	Roller Dia	Roller Width	Stud Dia	Stud Length	Min Thread Length		Overall Length	Crown Radius (CCF-xx)	Dyn	Static
		+0 -0.001	+0 -0.005	+0.001 -0	(Ref)	(Ref)		(Ref)	(Ref)	(lb)	(lb)
CF 056 CF 056 B CCF 056 CCF 056 B	CF 056 S CF 056 SB CCF 056 S CCF 056 SB	1.75	1	0.75	1.75	0.88	3/4-16	2.78	Cylindrical 20	6,385	7,920
CFE 056 CFE 056 B CCFE 056 CCFE 056 B	CFE 056 S CFE 056 SB CCFE 056 S CCFE 056 SB	1.75	1	0.75	1.75	0.88	3/4-16	2.78	Cylindrical 20	6,385	7,920
CFHS 056 CFHS 056 B CCFHS 056 CCFHS 056 B	CFHS 056 S CFHS 056 SB CCFHS 056 S CCFHS 056 SB	1.75	1	1	1.75	0.88	1-14	2.78	Cylindrical 20	6,385	15,840
CF 060 CF 060 B CCF 060 CCF 060 B	CF 060 S CF 060 SB CCF 060 S CCF 060 SB	1.875	1	0.75	1.75	0.88	3/4-16	2.78	Cylindrical 20	6,385	7,920
CFE 060 CFE 060 B CCFE 060 CCFE 060 B	CFE 060 S CFE 060 SB CCFE 060 S CCFE 060 SB	1.875	1	0.75	1.75	0.88	3/4-16	2.78	Cylindrical 20	6,385	7,920
CFHS 060 CFHS 060 B CCFHS 060 CCFHS 060 B	CFHS 060 S CFHS 060 SB CCFHS 060 S CCFHS 060 SB	1.875	1	1	1.75	0.88	1-14	2.78	Cylindrical 20	6,385	15,840

Inch Cam Follower (CF, CFE & CFH) Bearings



- Type:** Stud type Cylindrical / Crowned OD
- Rolling Elements:** Full complement needle roller
- Material:** Bearing quality steel
- Seal Type:** Disc
- Lubrication:** NLGI # 2 grease
- Configuration:** Concentric / Eccentric / Heavy stud
- Mounting Feature:** Slot / Hex Hole

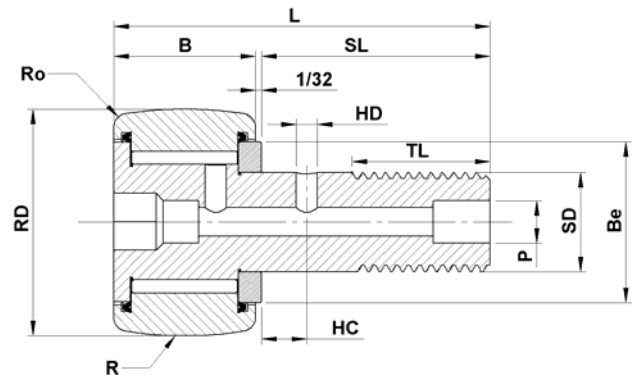


Basic Part Number With out Seals	E	G	BD	HSC	HSD	P	Be	Ro	HSBD		Clamping Force (lb)	Limiting Speed (RPM)	Weight Ref (lb)
	Eccentric (CFE-xx)			Hole Center (Ref)	Hole Dia (in)	Axial Hole Dia or Fitting (Ref)	Min Boss Dia (Ref)	Outer Corner Radius (Ref)	Housing Bore Diameter				
	Ref	+0 -0.010	+0.001 -0.001	(Ref)	(in)	(Ref)	(Ref)	(Ref)	Nom.	Tol			
CF 056 CF 056 B CCF 056 CCF 056 B	N/A	N/A	N/A	0.4375	0.13	0.1875	1.25	0.063 N/A	0.7503	+0.0002 -0.0003	1,250	2,200	0.84
CFE 056 CFE 056 B CCFE 056 CCFE 056 B	0.030	0.875	1.000	0.4375	0.13	0.1875	1.25	0.063 N/A	1.003	+0.001 -0.001	1,250	2,200	0.84
CFHS 056 CFHS 056 B CCFHS 056 CCFHS 056 B	N/A	N/A	N/A	0.4375	0.13	0.1875	1.25	0.063 N/A	1.0003	+0.0002 -0.0003	2,250	2,200	1
CF 060 CF 060 B CCF 060 CCF 060 B	N/A	N/A	N/A	0.4375	0.13	0.1875	1.25	0.063 N/A	0.7503	+0.0002 -0.0003	1,250	2,000	0.95
CFE 060 CFE 060 B CCFE 060 CCFE 060 B	0.030	0.875	1.000	0.4375	0.13	0.1875	1.25	0.063 N/A	1.003	+0.001 -0.001	1,250	2,000	0.095
CFHS 060 CFHS 060 B CCFHS 060 CCFHS 060 B	N/A	N/A	N/A	0.4375	0.13	0.1875	1.25	0.063 N/A	1.0003	+0.0002 -0.0003	2,250	2,000	1.15

Inch Cam Follower (CF, CFE & CFH) Bearings



- Type:** Stud type Cylindrical / Crowned OD
- Rolling Elements:** Full complement needle roller
- Material:** Bearing quality steel
- Seal Type:** Disc
- Lubrication:** NLGI # 2 grease
- Configuration:** Concentric / Eccentric / Heavy stud
- Mounting Feature:** Slot / Hex Hole

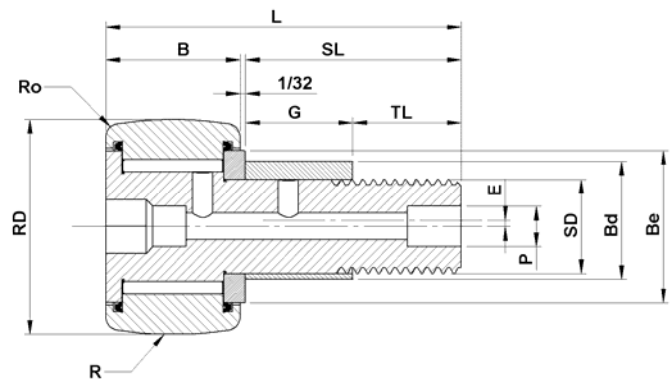


Part Number		RD	B	SD	SL	TL	Thread Class 2A	L	R	Load Rating			
Without Seals	With Seals	Roller Dia	Roller Width	Stud Dia	Stud Length	Min Thread Length				Overall Length	Crown Radius (CCF-xx)	Dyn	Static
		+0 -0.001	+0 -0.005	+0.001 -0	(Ref)	(Ref)				(Ref)	(Ref)	(lb)	(lb)
CF 064 CF 064 B CCF 064 CCF 064 B	CF 064 S CF 064 SB CCF 064 S CCF 064 SB	2	1.25	0.875	2	1	7/8-14	3.28	Cylindrical 24	8,090	10,570		
CFE 064 CFE 064 B CCFE 064 CCFE 064 B	CFE 064 S CFE 064 SB CCFE 064 S CCFE 064 SB	2	1.25	0.875	2	1	7/8-14	3.28	Cylindrical 24	8,090	10,570		
CFHS 064 CFHS 064 B CCFHS 064 CCFHS 064 B	CFHS 064 S CFHS 064 SB CCFHS 064 S CCFHS 064 SB	2	1.25	1.125	2	1	1 1/8-12	3.28	Cylindrical 24	8,090	21,140		
CF 072 CF 072 B CCF 072 CCF 072 B	CF 072 S CF 072 SB CCF 072 S CCF 072 SB	2.25	1.25	0.875	2	1	7/8-14	3.28	Cylindrical 24	8,090	10,570		
CFE 072 CFE 072 B CCFE 072 CCFE 072 B	CFE 072 S CFE 072 SB CCFE 072 S CCFE 072 SB	2.25	1.25	0.875	2	1	7/8-14	3.28	Cylindrical 24	8,090	10,570		
CFHS 072 CFHS 072 B CCFHS 072 CCFHS 072 B	CFHS 072 S CFHS 072 SB CCFHS 072 S CCFHS 072 SB	2.25	1.25	1.125	2	1	1 1/8-12	3.28	Cylindrical 24	8,090	21,140		

Inch Cam Follower (CF, CFE & CFH) Bearings



- Type:** Stud type Cylindrical / Crowned OD
- Rolling Elements:** Full complement needle roller
- Material:** Bearing quality steel
- Seal Type:** Disc
- Lubrication:** NLGI # 2 grease
- Configuration:** Concentric / Eccentric / Heavy stud
- Mounting Feature:** Slot / Hex Hole

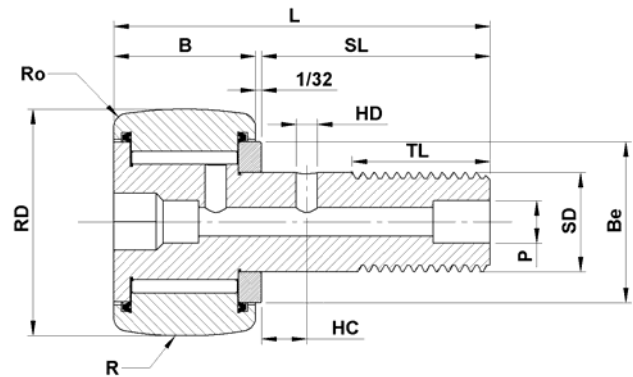


Basic Part Number With out Seals	E	G	BD	HSC	HSD	P	Be	Ro	HSBD		Clamping Force (lb)	Limiting Speed (RPM)	Weight Ref (lb)
	Eccentric (CFE-xx)			Hole Center (Ref)	Hole Dia (in)	Axial Hole Dia or Fitting (Ref)	Min Boss Dia (Ref)	Outer Corner Radius (Ref)	Housing Bore Diameter				
	Ref	+0 -0.010	+0.001 -0.001						Nom.	Tol			
CF 064 CF 064 B CCF 064 CCF 064 B	N/A	N/A	N/A	0.5	0.13	0.1875	1.406	0.094 N/A	0.8753	+0.0002 -0.0003	1,500	1,400	1.36
CFE 064 CFE 064 B CCFE 064 CCFE 064 B	0.030	1	1.187	0.5	0.13	0.1875	1.406	0.094 N/A	1.19	+0.001 -0.001	1,500	1,400	1.36
CFHS 064 CFHS 064 B CCFHS 064 CCFHS 064 B	N/A	N/A	N/A	0.5	0.13	0.1875	1.406	0.094 N/A	1.1253	+0.0002 -0.0003	2,800	1,400	1.56
CF 072 CF 072 B CCF 072 CCF 072 B	N/A	N/A	N/A	0.5	0.13	0.1875	1.406	0.094 N/A	0.8753	+0.0002 -0.0003	1,500	1,300	1.65
CFE 072 CFE 072 B CCFE 072 CCFE 072 B	0.030	1	1.187	0.5	0.13	0.1875	1.406	0.094 N/A	1.19	+0.001 -0.001	1,500	1,300	1.65
CFHS 072 CFHS 072 B CCFHS 072 CCFHS 072 B	N/A	N/A	N/A	0.5	0.13	0.1875	1.406	0.094 N/A	1.1253	+0.0002 -0.0003	2,800	1,300	1.88

Inch Cam Follower (CF, CFE & CFH) Bearings



- Type:** Stud type Cylindrical / Crowned OD
- Rolling Elements:** Full complement needle roller
- Material:** Bearing quality steel
- Seal Type:** Disc
- Lubrication:** NLGI # 2 grease
- Configuration:** Concentric / Eccentric / Heavy stud
- Mounting Feature:** Slot / Hex Hole

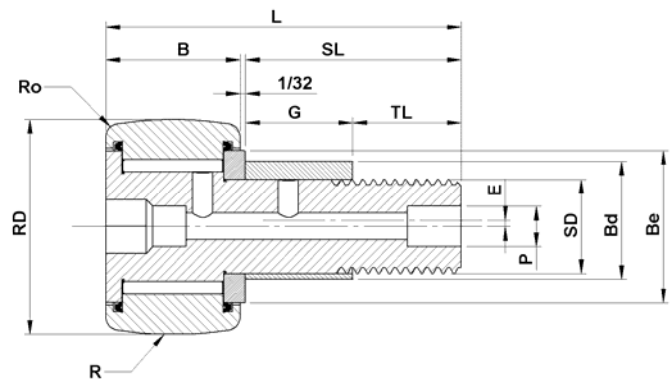


Part Number		RD	B	SD	SL	TL	Thread Class 2A	L	R	Load Rating			
Without Seals	With Seals	Roller Dia	Roller Width	Stud Dia	Stud Length	Min Thread Length				Overall Length	Crown Radius (CCF-xx)	Dyn	Static
		+0 -0.001	+0 -0.005	+0.001 -0	(Ref)	(Ref)				(Ref)	(Ref)	(lb)	(lb)
CF 080 CF 080 B CCF 080 CCF 080 B	CF 080 S CF 080 SB CCF 080 S CCF 080 SB	2.5	1.5	1	2.25	1.125	1-14	3.78	Cylindrical	11,720	16,450		
									30				
CFE 080 CFE 080 B CCFE 080 CCFE 080 B	CFE 080 S CFE 080 SB CCFE 080 S CCFE 080 SB	2.5	1.5	1	2.25	1.125	1-14	3.78	Cylindrical	11,720	16,450		
									30				
CFHS 080 CFHS 080 B CCFHS 080 CCFHS 080 B	CFHS 080 S CFHS 080 SB CCFHS 080 S CCFHS 080 SB	2.5	1.5	1.25	2.25	1.125	1 1/4-12	3.78	Cylindrical	11,720	3,290		
									30				
CF 088 CF 088 B CCF 088 CCF 088 B	CF 088 S CF 088 SB CCF 088 S CCF 088 SB	2.75	1.5	1	2.25	1.125	1-14	3.78	Cylindrical	1,720	16,450		
									30				
CFE 088 CFE 088 B CCFE 088 CCFE 088 B	CFE 088 S CFE 088 SB CCFE 088 S CCFE 088 SB	2.75	1.5	1	2.25	1.125	1-14	3.78	Cylindrical	11,720	16,450		
									30				
CFHS 088 CFHS 088 B CCFHS 088 CCFHS 088 B	CFHS 088 S CFHS 088 SB CCFHS 088 S CCFHS 088 SB	2.75	1.5	1.25	2.25	1.125	1 1/4-12	3.78	Cylindrical	11,720	3,290		
									30				

Inch Cam Follower (CF, CFE & CFH) Bearings



- Type:** Stud type Cylindrical / Crowned OD
- Rolling Elements:** Full complement needle roller
- Material:** Bearing quality steel
- Seal Type:** Disc
- Lubrication:** NLGI # 2 grease
- Configuration:** Concentric / Eccentric / Heavy stud
- Mounting Feature:** Slot / Hex Hole

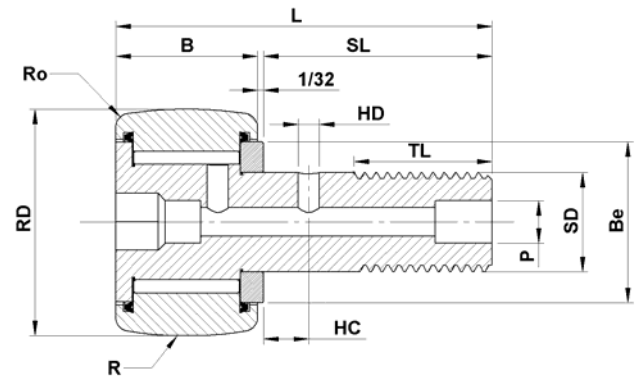


Basic Part Number With out Seals	E	G	BD	HSC	HSD	P	Be	Ro	HSBD		Clamping Force (lb)	Limiting Speed (RPM)	Weight Ref (lb)
	Eccentric (CFE-xx)			Hole Center (Ref)	Hole Dia (in)	Axial Hole Dia or Fitting (Ref)	Min Boss Dia (Ref)	Outer Corner Radius (Ref)	Housing Bore Diameter				
	Ref	+0 -0.010	+0.001 -0.001	(Ref)	(in)	(Ref)	(Ref)	(Ref)	Nom.	Tol			
CF 080 CF 080 B CCF 080 CCF 080 B	N/A	N/A	N/A	0.5625	0.13	0.1875	1.688	0.094 N/A	1.0003	+0.0002 -0.0003	2,250	1,100	2.5
CFE 080 CFE 080 B CCFE 080 CCFE 080 B	0.030	1.125	1.375	0.5625	0.13	0.1875	1.688	0.094 N/A	1.378	+0.001 -0.001	2,250	1,100	2.5
CFHS 080 CFHS 080 B CCFHS 080 CCFHS 080 B	N/A	N/A	N/A	0.5625	0.13	0.1875	1.688	0.094 N/A	1.2503	+0.0002 -0.0003	3,450	1,100	2.75
CF 088 CF 088 B CCF 088 CCF 088 B	N/A	N/A	N/A	0.5625	0.13	0.1875	1.688	0.094 N/A	1.0003	+0.0002 -0.0003	2,250	1,050	2.93
CFE 088 CFE 088 B CCFE 088 CCFE 088 B	0.030	1.125	1.375	0.5625	0.13	0.1875	1.688	0.094 N/A	1.378	+0.001 -0.001	2,250	1,050	2.93
CFHS 088 CFHS 088 B CCFHS 088 CCFHS 088 B	N/A	N/A	N/A	0.5625	0.13	0.1875	1.688	0.094 N/A	1.2503	+0.0002 -0.0003	3,450	1,050	3.19

Inch Cam Follower (CF, CFE & CFH) Bearings



- Type:** Stud type Cylindrical / Crowned OD
- Rolling Elements:** Full complement needle roller
- Material:** Bearing quality steel
- Seal Type:** Disc
- Lubrication:** NLGI # 2 grease
- Configuration:** Concentric / Eccentric / Heavy stud
- Mounting Feature:** Slot / Hex Hole

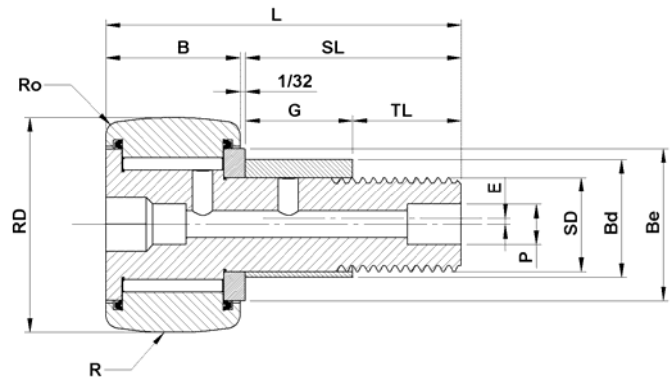


Part Number		RD	B	SD	SL	TL	Thread Class 2A	L	R	Load Rating			
Without Seals	With Seals	Roller Dia	Roller Width	Stud Dia	Stud Length	Min Thread Length				Overall Length	Crown Radius (CCF-xx)	Dyn	Static
		+0 -0.001	+0 -0.005	+0.001 -0	(Ref)	(Ref)				(Ref)	(Ref)	(lb)	(lb)
CF 096 CF 096 B CCF 096 CCF 096 B	CF 096 S CF 096 SB CCF 096 S CCF 096 SB	3	1.75	1.25	2.5	1.25	1 1/4-12	4.28	Cylindrical 30	15,720	24,910		
CFE 096 CFE 096 B CCFE 096 CCFE 096 B	CFE 096 S CFE 096 SB CCFE 096 S CCFE 096 SB	3	1.75	1.25	2.5	1.25	1 1/4-12	4.28	Cylindrical 30	15,720	24,910		
CFHS 096 CFHS 096 B CCFHS 096 CCFHS 096 B	CFHS 096 S CFHS 096 SB CCFHS 096 S CCFHS 096 SB	3	1.75	1.5	2.5	1.25	1 1/2-12	4.28	Cylindrical 30	15,720	49,820		
CF 104 CF 104 B CCF 104 CCF 104 B	CF 104 S CF 104 SB CCF 104 S CCF 104 SB	3.25	1.75	1.25	2.5	1.25	1 1/4-12	4.28	Cylindrical 30	15,720	24,910		
CFE 104 CFE 104 B CCFE 104 CCFE 104 B	CFE 104 S CFE 104 SB CCFE 104 S CCFE 104 SB	3.25	1.75	1.25	2.5	1.25	1 1/4-12	4.28	Cylindrical 30	15,720	24,910		
CFHS 104 CFHS 104 B CCFHS 104 CCFHS 104 B	CFHS 104 S CFHS 104 SB CCFHS 104 S CCFHS 104 SB	3.25	1.75	1.5	2.5	1.25	1 1/2-12	4.28	Cylindrical 30	15,720	49,820		

Inch Cam Follower (CF, CFE & CFH) Bearings



- Type:** Stud type Cylindrical / Crowned OD
- Rolling Elements:** Full complement needle roller
- Material:** Bearing quality steel
- Seal Type:** Disc
- Lubrication:** NLGI # 2 grease
- Configuration:** Concentric / Eccentric / Heavy stud
- Mounting Feature:** Slot / Hex Hole

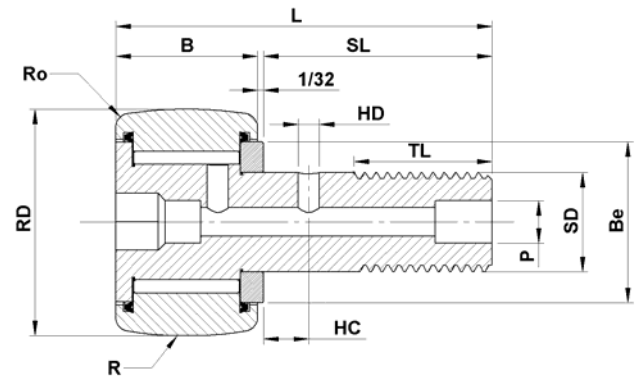


Basic Part Number With out Seals	E	G	BD	HSC	HSD	P	Be	Ro	HSBD		Clamping Force (lb)	Limiting Speed (RPM)	Weight Ref (lb)
	Eccentric (CFE-xx)			Hole Center (Ref)	Hole Dia (in)	Axial Hole Dia or Fitting (Ref)	Min Boss Dia (Ref)	Outer Corner Radius (Ref)	Housing Bore Diameter				
	Ref	+0 -0.010	+0.001 -0.001	(Ref)	(in)	(Ref)	(Ref)	(Ref)	Nom.	Tol			
CF 096 CF 096 B CCF 096 CCF 096 B	N/A	N/A	N/A	0.625	0.13	0.25 *	2.125	0.125 N/A	1.2503	+0.0002 -0.0003	3,450	950	4.2
CFE 096 CFE 096 B CCFE 096 CCFE 096 B	0.060	1.25	1.750	0.625	0.13	0.25 *	2.125	0.125 N/A	1.753	+0.001 -0.001	3,450	950	4.2
CFHS 096 CFHS 096 B CCFHS 096 CCFHS 096 B	N/A	N/A	N/A	0.625	0.13	0.25 *	2.125	0.125 N/A	1.5003	+0.0002 -0.0003	5,000	950	4.56
CF 104 CF 104 B CCF 104 CCF 104 B	N/A	N/A	N/A	0.625	0.13	0.25 *	2.125	0.125 N/A	1.2503	+0.0002 -0.0003	3,450	880	4.81
CFE 104 CFE 104 B CCFE 104 CCFE 104 B	0.060	1.25	1.750	0.625	0.13	0.25 *	2.125	0.125 N/A	1.753	+0.001 -0.001	3,450	880	4.81
CFHS 104 CFHS 104 B CCFHS 104 CCFHS 104 B	N/A	N/A	N/A	0.625	0.13	0.25 *	2.125	0.125 N/A	1.5003	+0.0002 -0.0003	5,000	880	5.19

Inch Cam Follower (CF, CFE & CFH) Bearings



- Type:** Stud type Cylindrical / Crowned OD
- Rolling Elements:** Full complement needle roller
- Material:** Bearing quality steel
- Seal Type:** Disc
- Lubrication:** NLGI # 2 grease
- Configuration:** Concentric / Eccentric / Heavy stud
- Mounting Feature:** Slot / Hex Hole

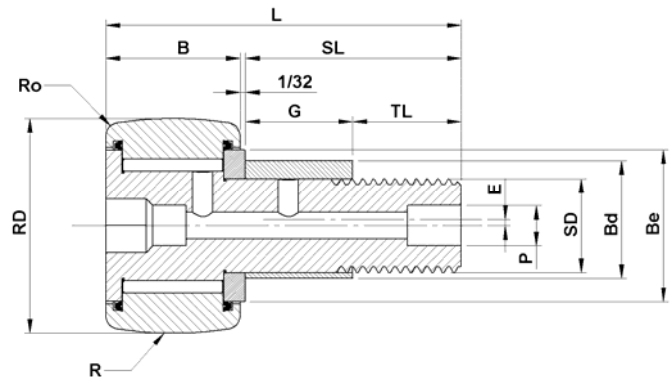


Part Number		RD	B	SD	SL	TL	Thread Class 2A	L	R	Load Rating	
Without Seals	With Seals	Roller Dia	Roller Width	Stud Dia	Stud Length	Min Thread Length		Overall Length	Crown Radius (CCF-xx)	Dyn	Static
		+0 -0.001	+0 -0.005	+0.001 -0	(Ref)	(Ref)		(Ref)	(Ref)	(lb)	(lb)
CF 112 CF 112 B CCF 112 CCF 112 B	CF 112 S CF 112 SB CCF 112 S CCF 112 SB	3.5	2	1.375	2.75	1.375	1 3/8-12	4.78	Cylindrical 30	22,800	31,625
CFE 112 CFE 112 B CCFE 112 CCFE 112 B	CFE 112 S CFE 112 SB CCFE 112 S CCFE 112 SB	3.5	2	1.375	2.75	1.375	1 3/8-12	4.78	Cylindrical 30	22,800	31,625
CFHS 112 CFHS 112 B CCFHS 112 CCFHS 112 B	CFHS 112 S CFHS 112 SB CCFHS 112 S CCFHS 112 SB	3.5	2	1.75	2.75	1.375	1 3/4-12	4.78	Cylindrical 30	22,800	63,250
CF 128 CF 128 B CCF 128 CCF 128 B	CF 128 S CF 128 SB CCF 128 S CCF 128 SB	4	2.25	1.5	3.5	1.5	1 1/2-12	5.78	Cylindrical 30	22,800	44,770
CFE 128 CFE 128 B CCFE 128 CCFE 128 B	CFE 128 S CFE 128 SB CCFE 128 S CCFE 128 SB	4	2.25	1.5	3.5	1.5	1 1/2-12	5.78	Cylindrical 30	22,800	44,770
CFHS 128 CFHS 128 B CCFHS 128 CCFHS 128 B	CFHS 128 S CFHS 128 SB CCFHS 128 S CCFHS 128 SB	4	2.25	2	3.5	1.5	2-12	5.78	Cylindrical 30	29,985	89,540

Inch Cam Follower (CF, CFE & CFH) Bearings



- Type:** Stud type Cylindrical / Crowned OD
- Rolling Elements:** Full complement needle roller
- Material:** Bearing quality steel
- Seal Type:** Disc
- Lubrication:** NLGI # 2 grease
- Configuration:** Concentric / Eccentric / Heavy stud
- Mounting Feature:** Slot / Hex Hole

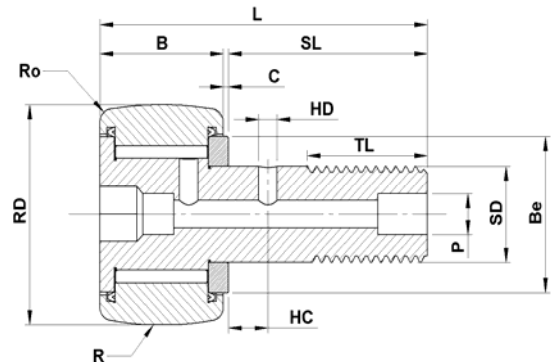


Basic Part Number With out Seals	E	G	BD	HSC	HSD	P	Be	Ro	HSBD		Clamping Force (lb)	Limiting Speed (RPM)	Weight Ref (lb)
	Eccentric (CFE-xx)			Hole Center	Hole Dia	Axial Hole Dia or Fitting	Min Boss Dia	Outer Corner Radius	Housing Bore Diameter				
	Ref	+0 -0.010	+0.001 -0.001	(Ref)	(in)	(Ref)	(Ref)	(Ref)	Nom.	Tol			
CF 112 CF 112 B CCF 112 CCF 112 B	N/A	N/A	N/A	0.6875	0.13	0.25 *	2.438	0.125 N/A	1.3753	+0.0002 -0.0003	4,200	820	6.42
CFE 112 CFE 112 B CCFE 112 CCFE 112 B	0.060	1.375	1.812	0.6875	0.13	0.25 *	2.438	0.125 N/A	1.815	+0.001 -0.001	4,200	820	6.42
CFHS 112 CFHS 112 B CCFHS 112 CCFHS 112 B	N/A	N/A	N/A	0.6875	0.13	0.25 *	2.438	0.125 N/A	1.7503	+0.0002 -0.0003	5,000	820	7.01
CF 128 CF 128 B CCF 128 CCF 128 B	N/A	N/A	N/A	0.75	0.13	0.25 *	2.797	0.125 N/A	1.5003	+0.0002 -0.0003	5,000	700	9.46
CFE 128 CFE 128 B CCFE 128 CCFE 128 B	0.060	2.000	2.000	0.75	0.13	0.25 *	2.797	0.125 N/A	2.002	+0.001 -0.001	5,000	700	9.46
CFHS 128 CFHS 128 B CCFHS 128 CCFHS 128 B	N/A	N/A	N/A	0.75	0.13	0.25 *	2.797	0.125 N/A	2.0003	+0.0002 -0.0003	5,000	700	10.83

Inch Cam Follower (CF, CFE & CFH) Bearings



Type: Stud type Cylindrical / Crowned OD
Rolling Elements: Full complement needle roller
Material: Bearing quality steel
Seal Type: Disc
Lubrication: NLGI # 2 grease
Configuration: Concentric / Eccentric / Heavy stud
Mounting Feature: Slot / Hex Hole

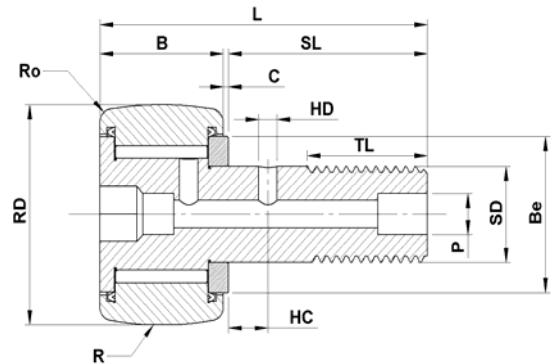


Part Number		RD	B	SD	SL	C	TL	Thread Class 2A	L	R	Load Rating	
Without Seals	With Seals	Roller Dia	Roller Width	Stud Dia	Stud Length	Endplate Extension	Min Thread Length		Overall Length	Crown Radius (CCF-xx)	Dyn	Static
		+0 -0.001	+0 -0.005	+0.001 -0	(Ref)	(Ref)	(Ref)		(Ref)	(Ref)	(lb)	(lb)
-	CF 160 SB CCF 160 SB	5.000	2.75	2	5.06	0.062	2.563	2-12	7.88	Cylindrical 48	46,575	67,950
	CFHS 160 SB CCFHS 160 SB	5.000	2.75	2.5	5.06	0.062	2.563	2 1/2-12	7.88	Cylindrical 48	46,575	135,900
-	CF 192 SB CCF 192 SB	6.000	3.25	2.5	6	0.062	3	2 1/2-12	9.31	Cylindrical 56	60,000	80,450
	CFHS 192 SB CCFHS 192 SB	6.000	3.25	2.5	6	0.062	3	3-12	9.31	Cylindrical 56	60,000	160,900
-	CF 224 SB CCF 224 SB	7.000	3.75	3	7.69	0.062	4.125	3-12	11.5	Cylindrical 60	75,380	106,930
	CFHS 224 SB CCFHS 224 SB	7.000	3.75	3	7.69	0.062	4.125	3 1/2-4	11.5	Cylindrical 60	75,380	213,860
-	CF 256 SB CCF 256 SB	8.000	4.25	3.25	8.5	0.125	4.25	3 1/4-4	12.81	Cylindrical 40	92,200	144,100
-	CF 288 SB CCF 288 SB	9.000	4.75	3.75	9.5	0.125	4.75	3 1/2-4	14.31	Cylindrical 40	113,620	183,430
-	CF 320 SB CCF 320 SB	10.000	5.25	4.25	10	0.125	4.75	3 1/2-4	15.31	Cylindrical 40	131,545	215,565

Inch Cam Follower (CF, CFE & CFH) Bearings



- Type:** Stud type Cylindrical / Crowned OD
- Rolling Elements:** Full complement needle roller
- Material:** Bearing quality steel
- Seal Type:** Disc
- Lubrication:** NLGI # 2 grease
- Configuration:** Concentric / Eccentric / Heavy stud
- Mounting Feature:** Slot / Hex Hole



Basic Part Number With Seals	HSC	HSD	P	Be	Ro	HSBD		Clamping Force (lb)	Limiting Speed (RPM)	Weight Ref (lb)
	Hole Center (Ref)	Hole Dia (in)	Axial Hole Dia or Fitting (Ref)	Min Boss Dia (Ref)	Outer Corner Radius (Ref)	Housing Bore Diameter				
						Nom.	Tol			
CF 160 S CCF 160 S	0.875	0.1875	1/4-NPT	3.563	0.125	2.0003	+0.0002 -0.0003	5,000	575	19.6
CFHS 160 S CCFHS 160 S	0.875	0.1875	1/4-NPT	3.563	0.125	2.503	+0.0002 -0.0003	5,000	575	22.1
CF 192 S CCF 192 S	1	0.1875	1/4-NPT	4.469	0.125	2.503	+0.0002 -0.0003	5,000	475	32.73
CFHS 192 S CCFHS 192 S	1	0.1875	1/4-NPT	4.469	0.125	3.0003	+0.0002 -0.0003	5,000	475	36.41
CF 224 S CCF 224 S	1.25	0.1875	1/4-NPT	5.188	0.125	3.0003	+0.0002 -0.0003	5,000	400	54.73
CFHS 224 S CCFHS 224 S	1.25	0.1875	1/4-NPT	5.188	0.125	3.5003	+0.0002 -0.0003	5,000	400	68.03
CF 256 S CCF 256 S	-	-	1/4-NPT	4.375	0.219	3.2503	+0.0002 -0.0003	5,000	350	79.8
CF 288 S CCF 288 S	-	-	1/4-NPT	5.063	0.25	3.7503	+0.0002 -0.0003	5,000	300	111.6
CF 320 S CCF 320 S	-	-	1/4-NPT	5.469	0.281	4.2503	+0.0002 -0.0003	5,000	275	148.2